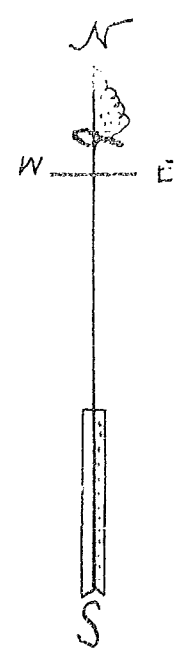
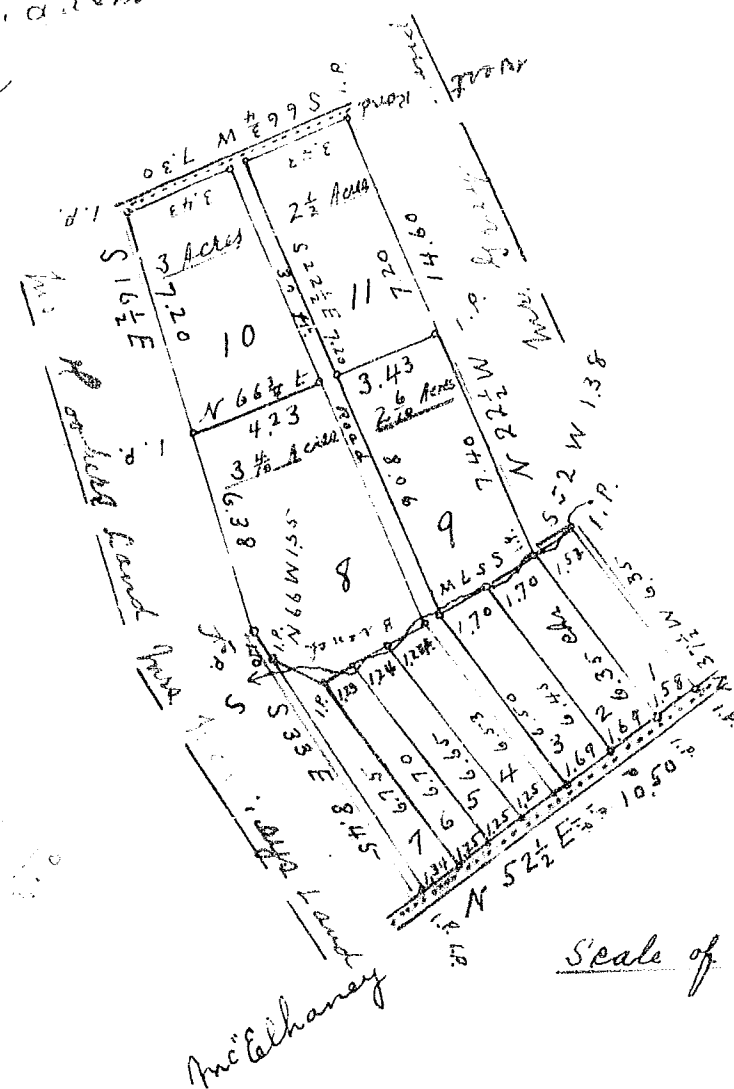


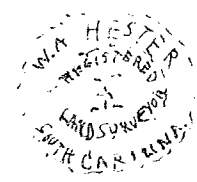
# Plat Book H-Page 230 A

at 11:45 a.m.  
 # 247  
 Survey  
 N. 229  
 J. U. Dickson



Scale of 5 chs. per inch.

South Carolina }  
 Greenville County } Property of W. A. Hester  
 Surveyed Oct. 23, 1935  
 W. A. Hester L. S.



230

## BAD COPY