

997 192

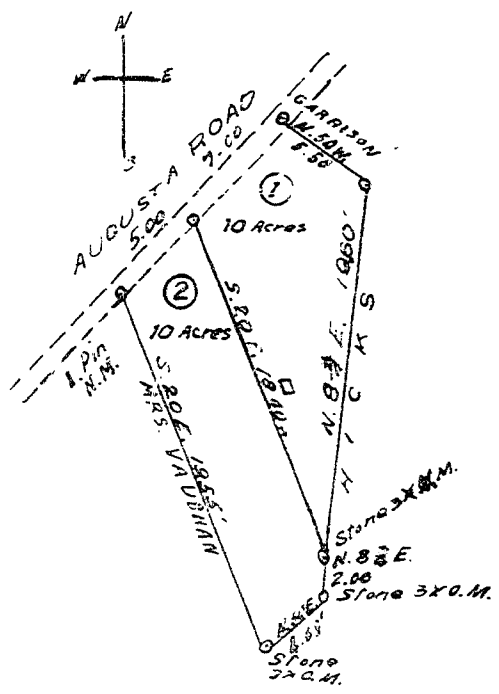
State of South Carolina,
County of Greenville,

By order of J. Walter Gray, Master,
I have this day cut off from the real estate of
W. W. Vaughan, deceased, a tract of land which is
represented by the above plat, and contains
twenty acres, this twenty acres being divided
as shown in the above plat into two tracts of ten
acres each.

Surveyed October 11, 1904.

John M. Cureton,
Surveyor

Scale of 10 chains per inch



See judgment roll No. 2294

Recorded Aug. 11, 1931 - P.C.

BAD COPY