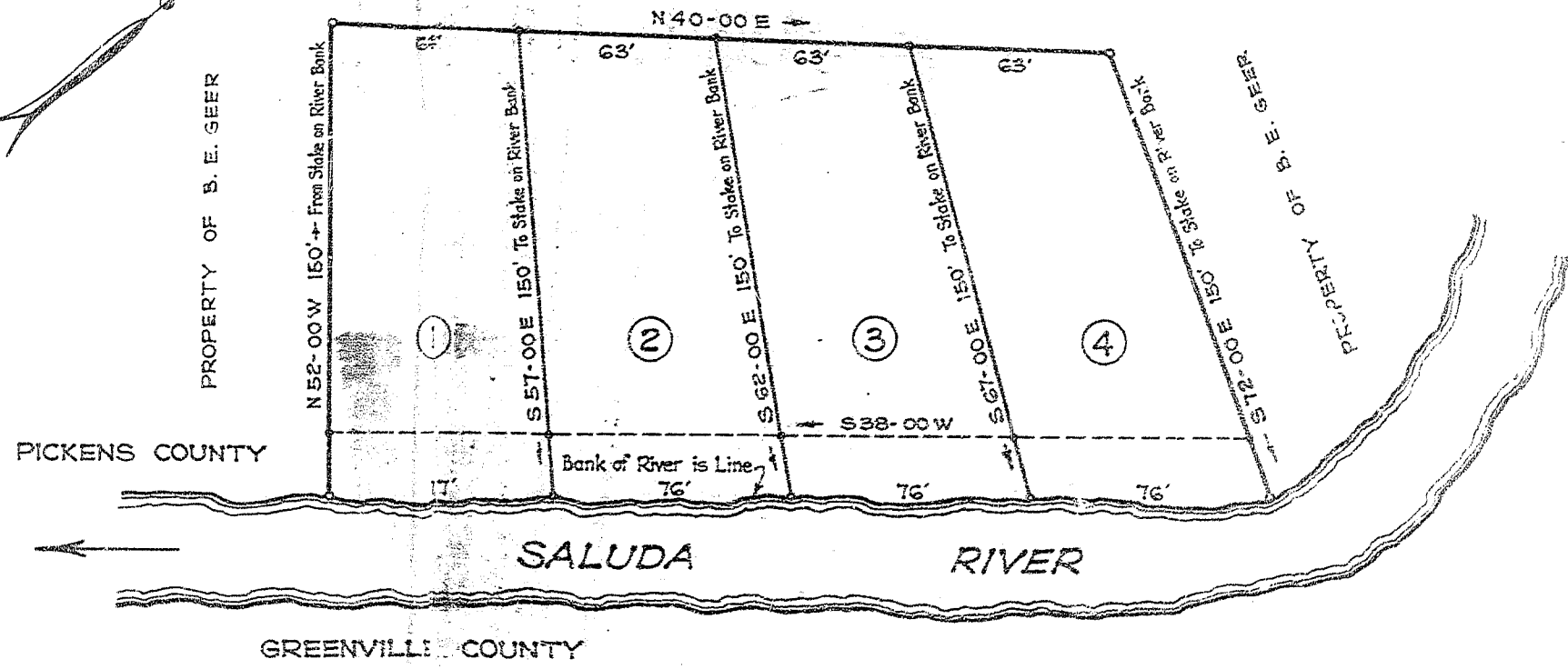


PROPERTY OF B. E. GEER



NOTE:  
Wooden Stakes at  
all Corners.

PROPERTY OF  
B. E. GEER

SALUDA RIVER

PICKENS COUNTY S.C.

Scale: 1" = 50'

July, 1933

Surveyed by W.D.N.

DALTON & NEVES-ENGRS.

Recorded January 20, 1934, by Kay Bee