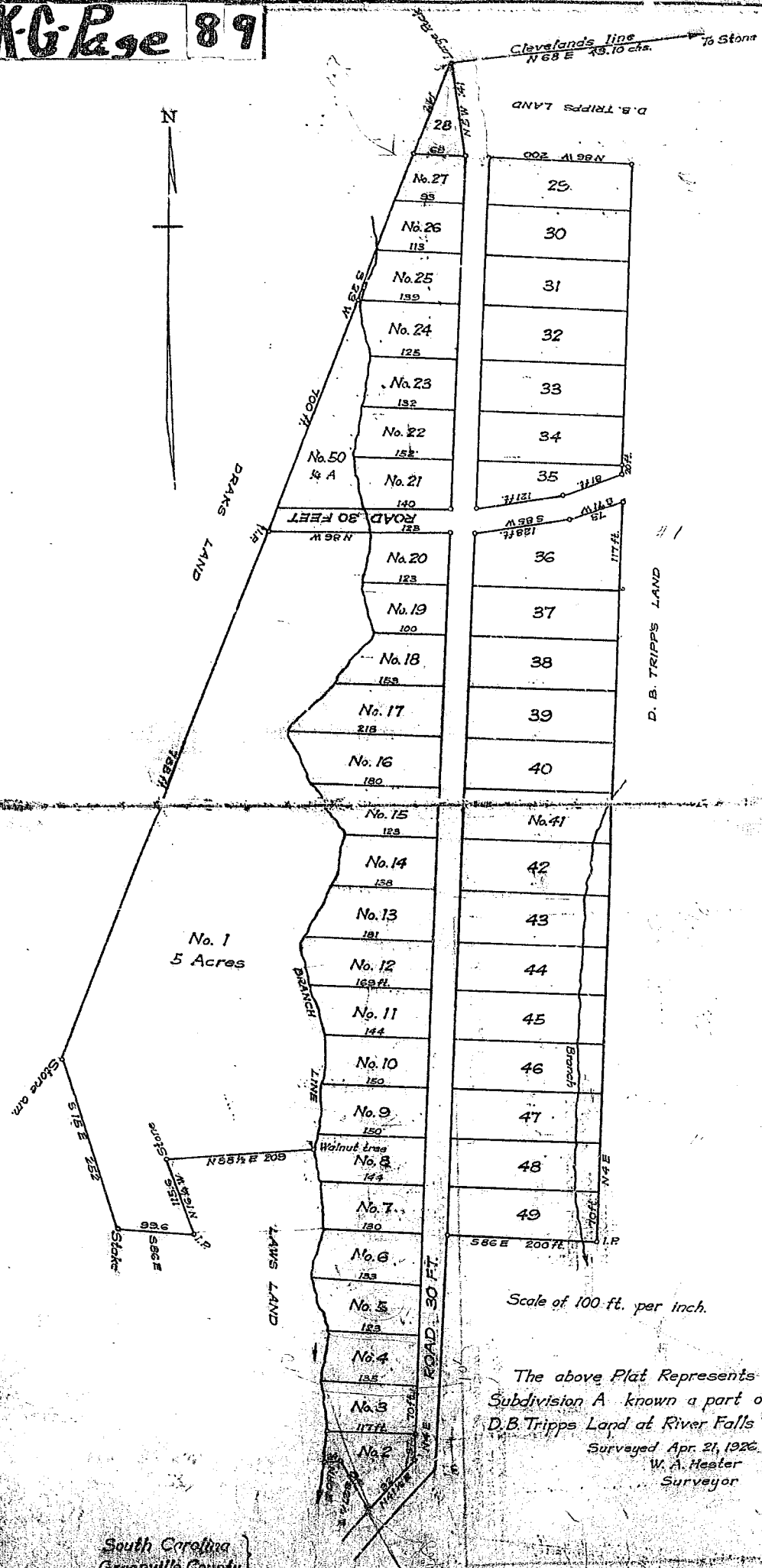


# Plat Book G. Page 89

Recorded July 20, 1926 by Kay. Bee.



South Carolina  
Greenville County

Scale of 100 ft. per inch.

The above Plat Represents  
Subdivision A known a part of  
D. B. Tripps Land at River Falls  
Surveyed Apr. 21, 1926.  
W. A. Heister  
Surveyor