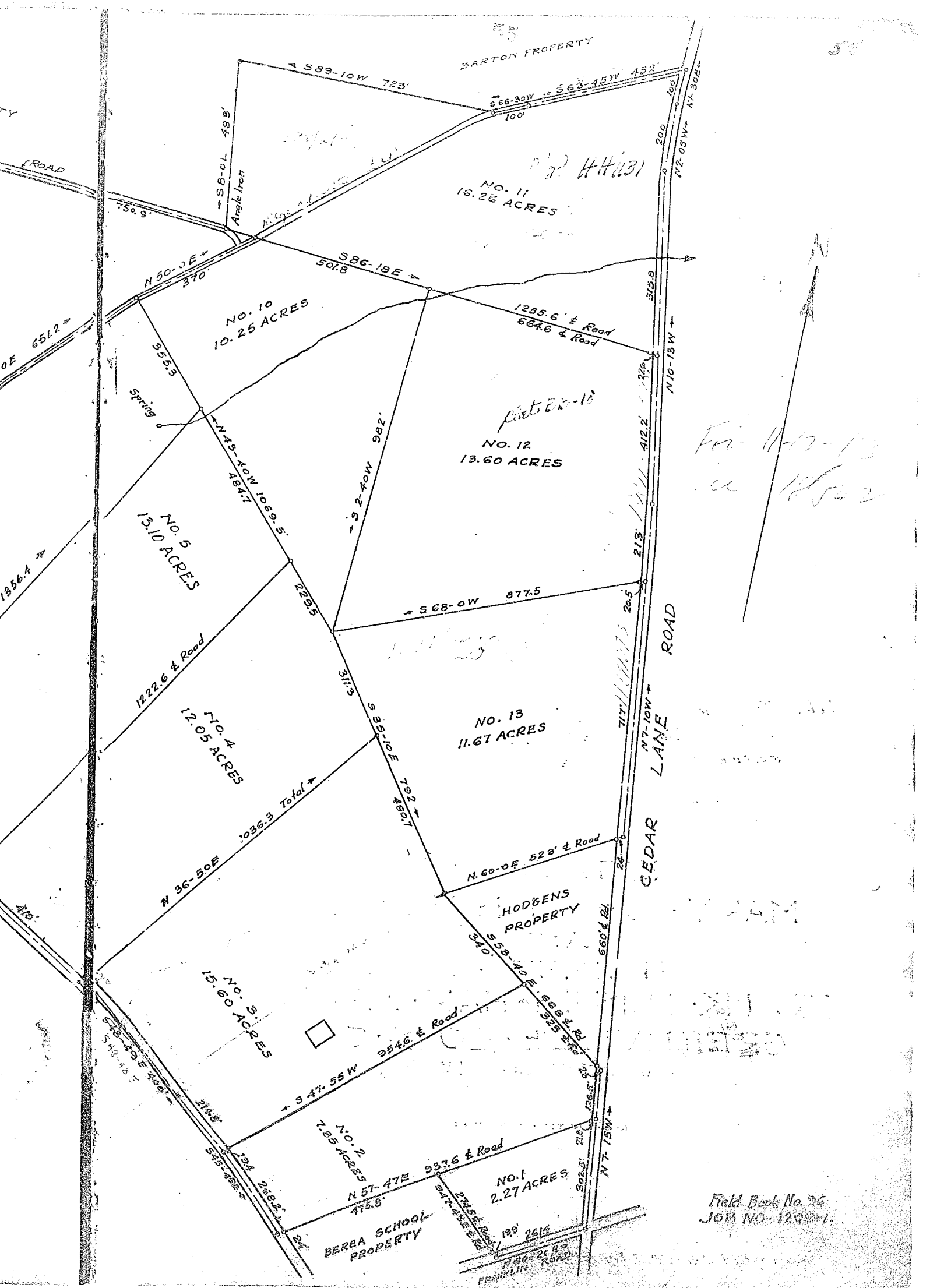


Notes: Tracts No 11-12 & 13 Comprises  
 Estate of Mary C. Cunningham.  
 Iron Pipe at all Corners, except as noted

ESTATE OF  
 MARY · C · CUNNINGHAM  
 AND  
 PROPERTY OF  
 FRANK · CUNNINGHAM · ET · AL  
 GREENVILLE · CO · S · C  
 Scale 1" = 200' June 1925

R. E. DALTON · ENGINEER

Recorded Jan. 8, 1926 By A.M.W.



SARTON PROPERTY

NO. 11  
16.26 ACRES

NO. 10  
10.25 ACRES

NO. 12  
13.60 ACRES

NO. 5  
13.10 ACRES

NO. 4  
12.05 ACRES

NO. 13  
11.67 ACRES

NO. 3  
15.60 ACRES

HODGENS  
PROPERTY

NO. 2  
7.85 ACRES

NO. 1  
2.27 ACRES

BEREA SCHOOL  
PROPERTY

*For 11-17-13  
in 1852*

Field Book No. 26  
JOB NO. 12001