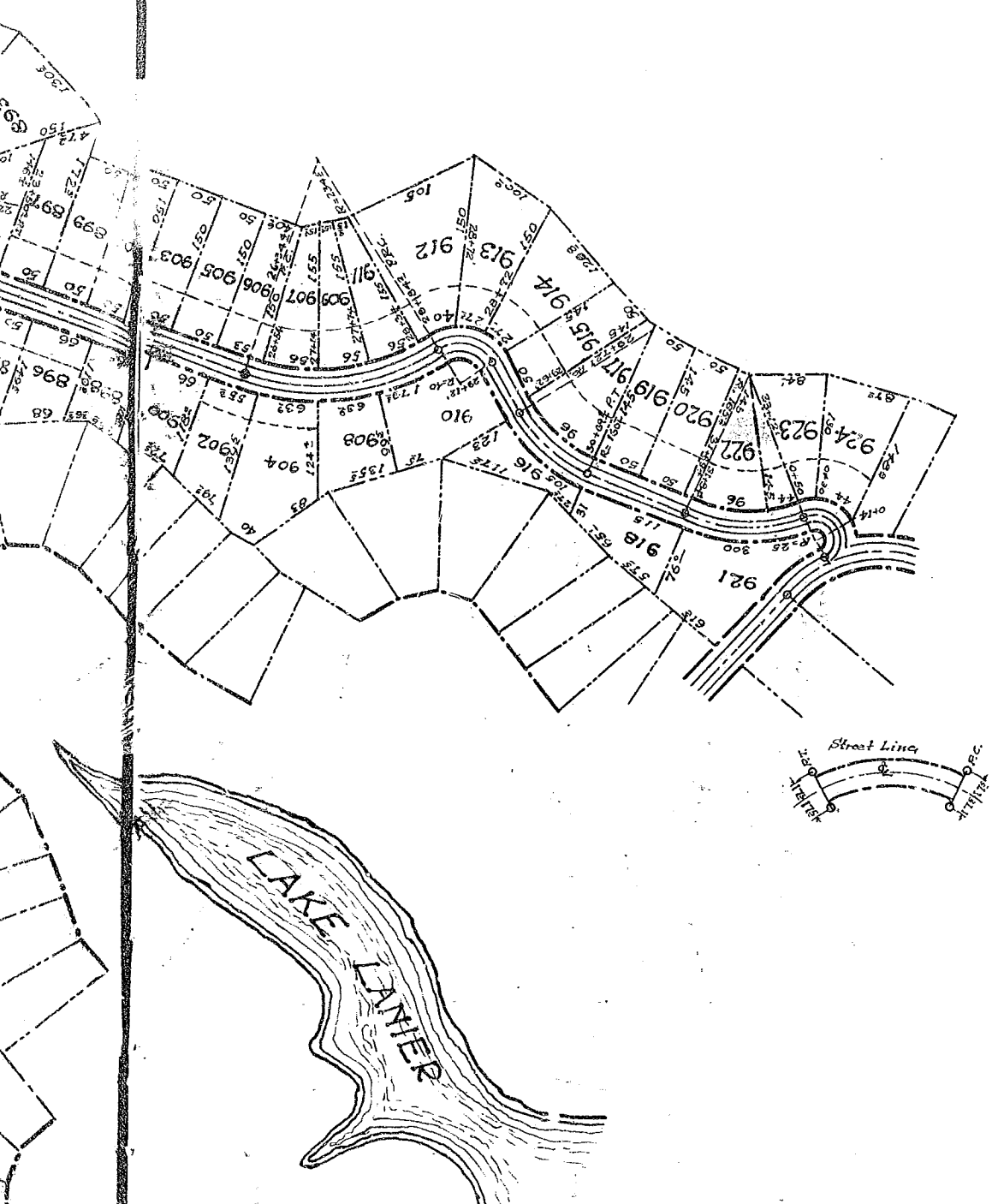


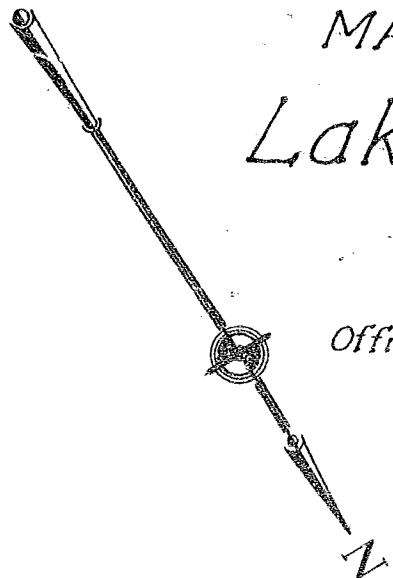
Note
All distances shown on curved
lines are measured in chords of
25 feet.

Building line is 40ft.
unless otherwise noted.

Note concrete monuments placed
at the beginning of all curves.



MARE'CHAL FOCH SECTION
 Lake Lanier Development,
 TRYON, N.C.



Scale 1" = 120'
 Office of Geo. Kershaw Hendersonville, N.C.
 July, 15, 1925.