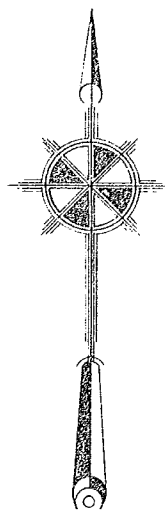
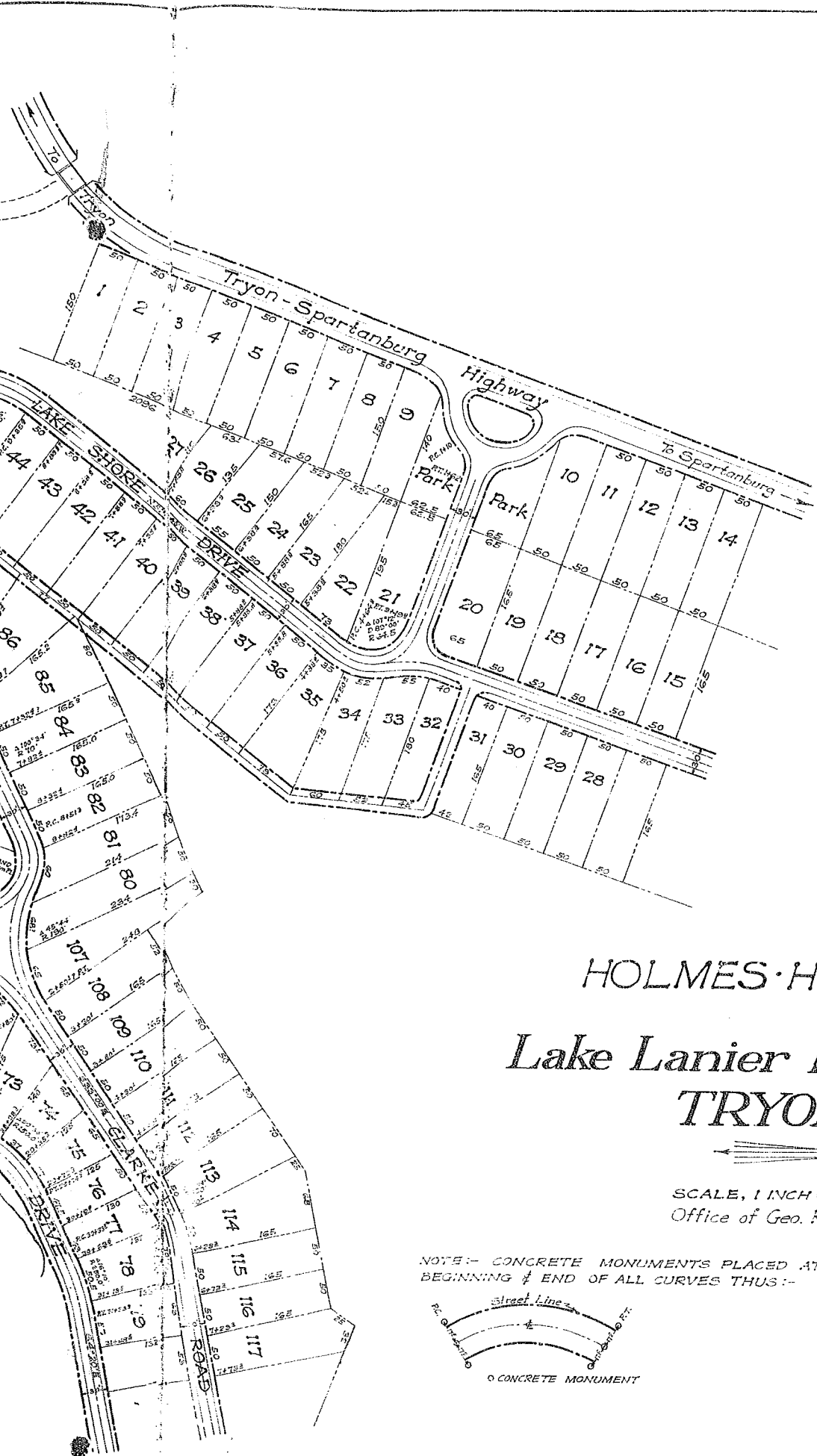
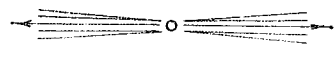




Reduced from a scale of 1 inch = 50 feet by Kim Bee

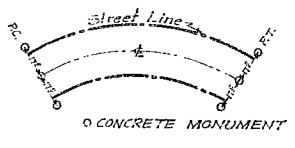


HOLMES HILL SECTION
of
Lake Lanier Development
TRYON, N.C.



SCALE, 1 INCH = 120 FEET
Office of Geo. Kershaw, Hendersonville, N.C.

NOTE: - CONCRETE MONUMENTS PLACED AT THE BEGINNING & END OF ALL CURVES THUS: -



NOTE: - Building Line 40 Feet From Street Line Where Not Shown Otherwise.