

Recorded March 17, 1923 by Kay. Dec.



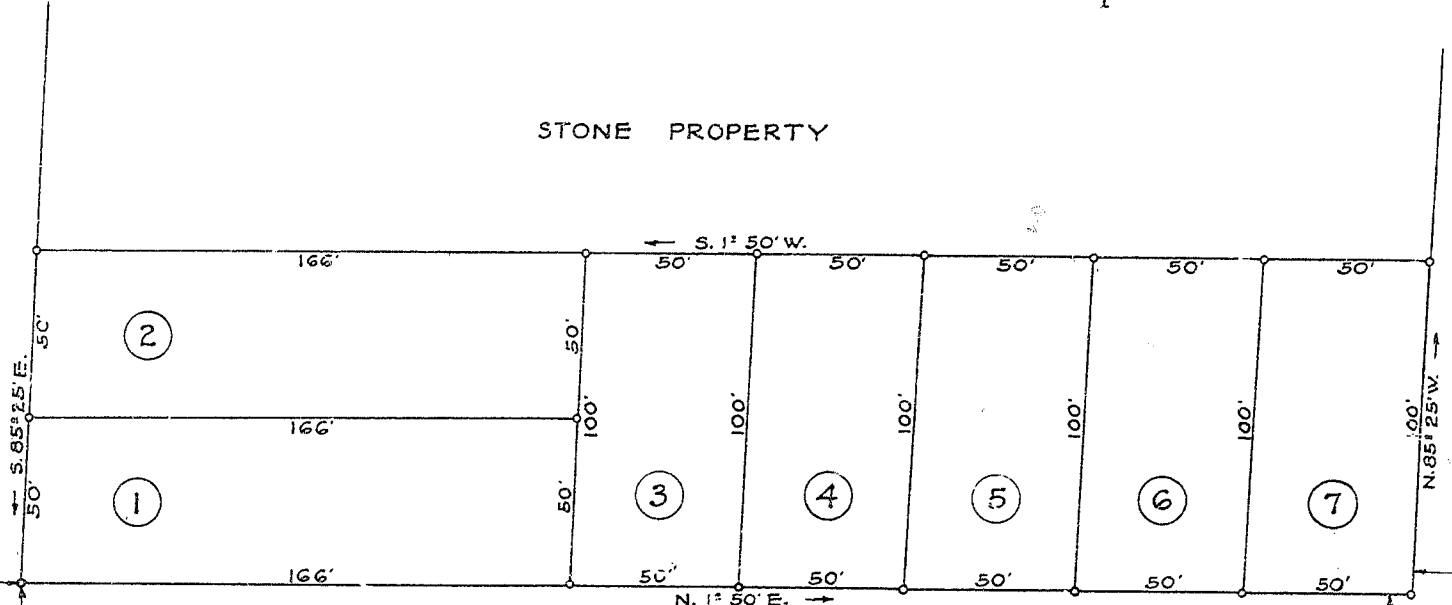
STONE PROPERTY

STREET

STREET

60'

60'



ROBINSON STREET

60'

60'

EARLE

CROFT

MAP
OF
GREENE HEIGHTS
FOR
J. LEE GREENE
GREENVILLE, S.C.

SCALE: 40' = 1"

Surveyed & Platted March 14, 1923.

I.P. at all corners.