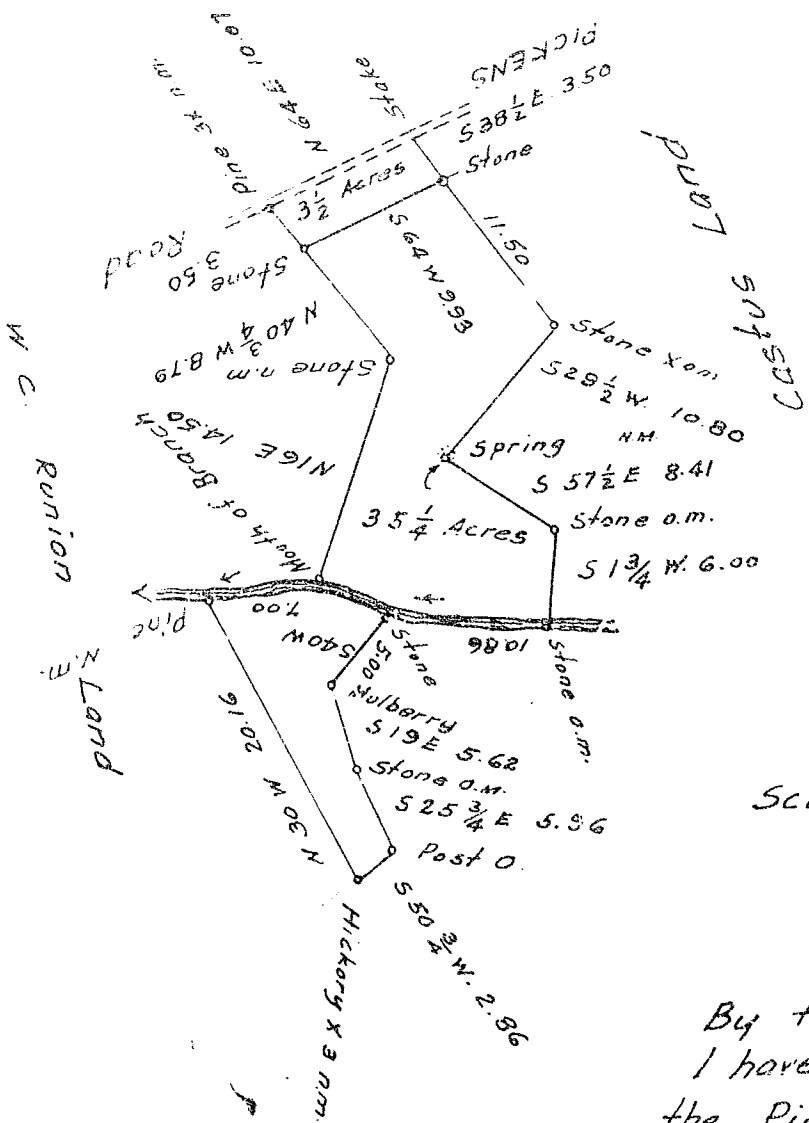


Plat Book-F-Page 90A



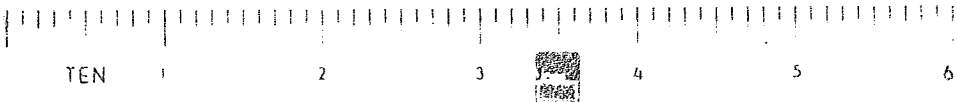
Scale of 10 Chs. Per inch.

South Carolina
Greenville County

By the request of W. C. Runion
I have cut off $3\frac{1}{2}$ Acres on
the Pickens Road. Also $35\frac{1}{4}$ Acres
on both sides of the Creek.
and took the notes from
a Plat made by Mr. Talley
in 1891 for the outside lines
and find it to contain $35\frac{1}{4}$ Acres.
The dividing line surveyed July 7, 1922.

W. A. Hester
Surveyor.

Recorded Nov. 11, 1922, by R. E. D.



90A