

ESTATE OF GEORGE W. MARSHALL

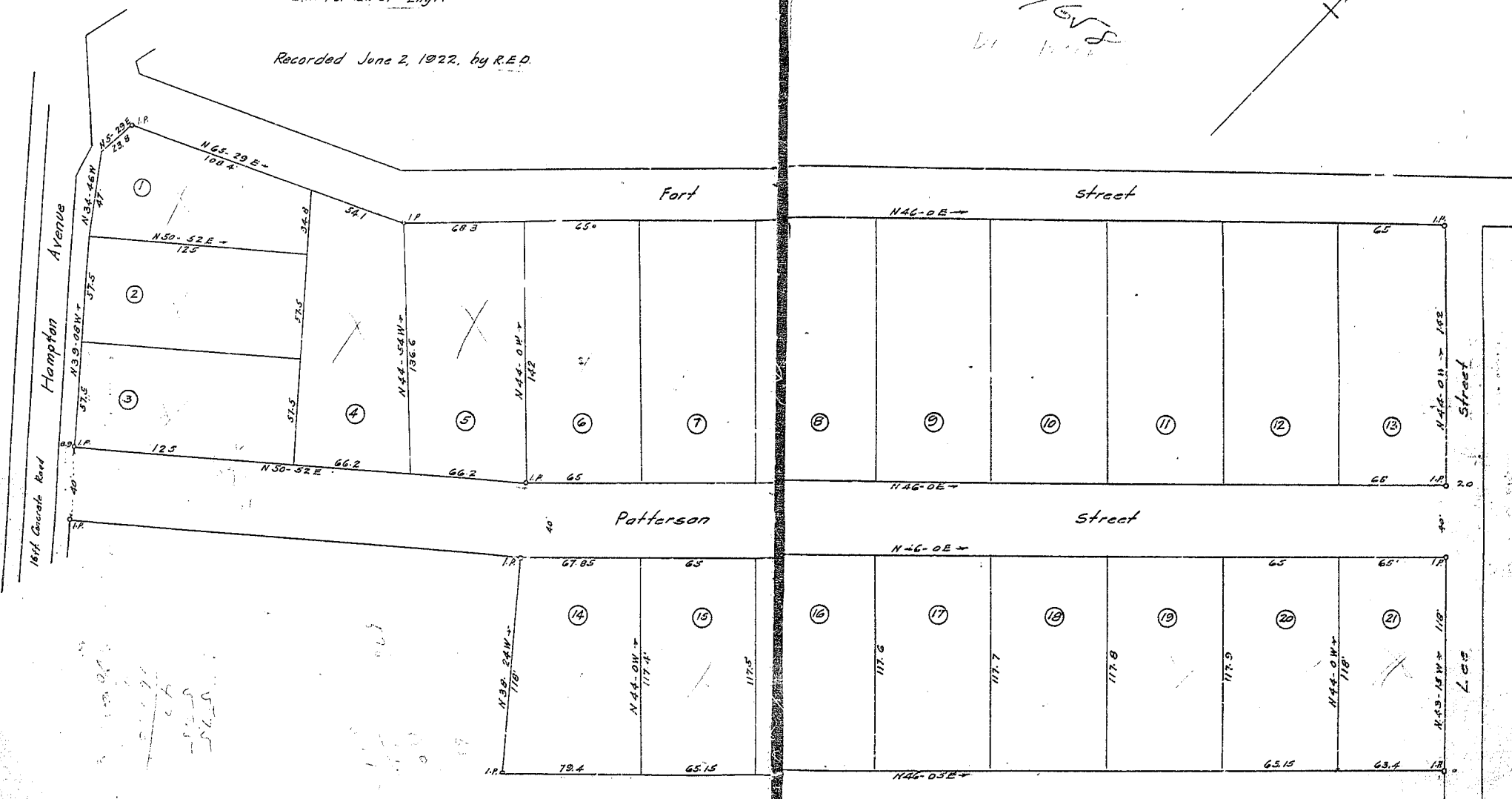
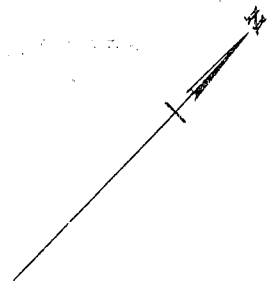
GREENVILLE S.C.

Scale 1" = 40ft. Feb 7, 1922

C. M. Furman Jr. Engr.

Recorded June 2, 1922, by R.E.D.

See Plat
R.E.E./G.S.
D. 11/11



117.4
117.5
117.6
117.7
117.8
117.9
118.0

179.4
37.5
117.4
117.5
117.6
117.7
117.8
117.9
118.0
533.7