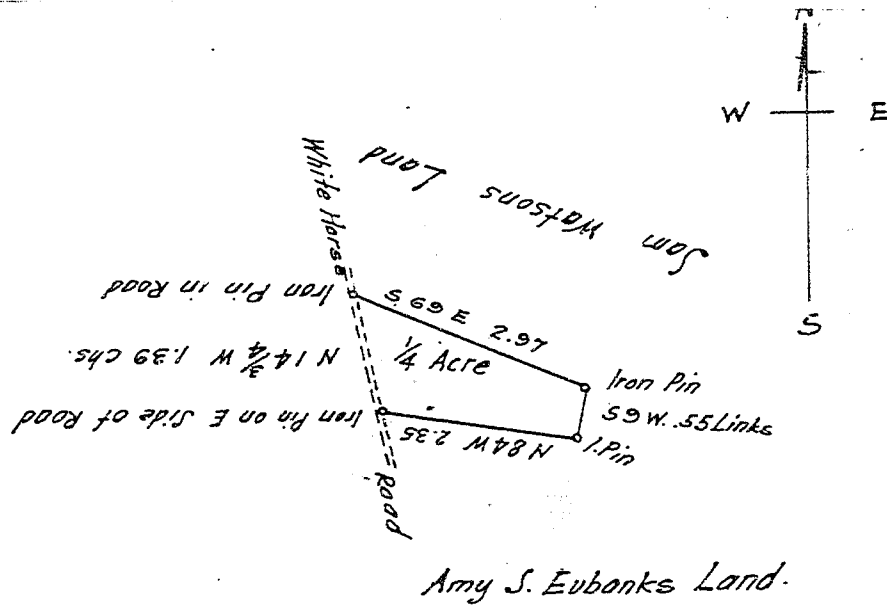


279



Amy S. Eubanks Land.

Scale of 2 chs per inch.

South Carolina }
Greenville County }

By the request of Miss Amy S. Eubanks, I have surveyed the above piece of Land for Cemetery purposes; and it contains 1/4 Acre and has such shape marks and boundaries, as the above Plat represents

Surveyed Sept. 25, 1920

W. A. Hester

Surveyor.

Recorded Jan 18, 1921,
by R. E. D.