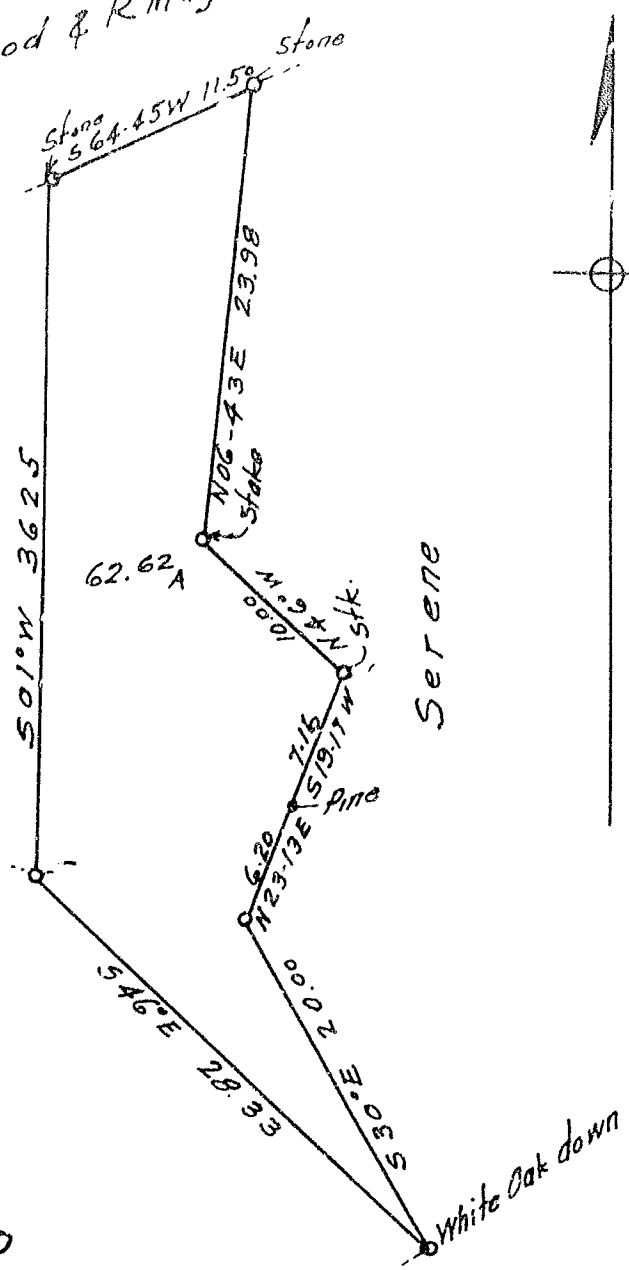


J. Norwood & R. Mays Cleveland

Formerly M. M. Tankersley

Serene



Feb. 4 1920 by RED

MAP
of

A Tract of Land owned by Saluda Land & Lumber Co
Formerly ██████████ M. M. & Berry Tankersley
Situating

Greenville County - South Carolina
Surveyed by Howard Wiswall & J. V. Mae C.E.'s
1918-19

Contains 62.62 Acres - Scale 1" = 10 Chains.

Platted to Larger Scale by Richard C. Rhee 1920

667