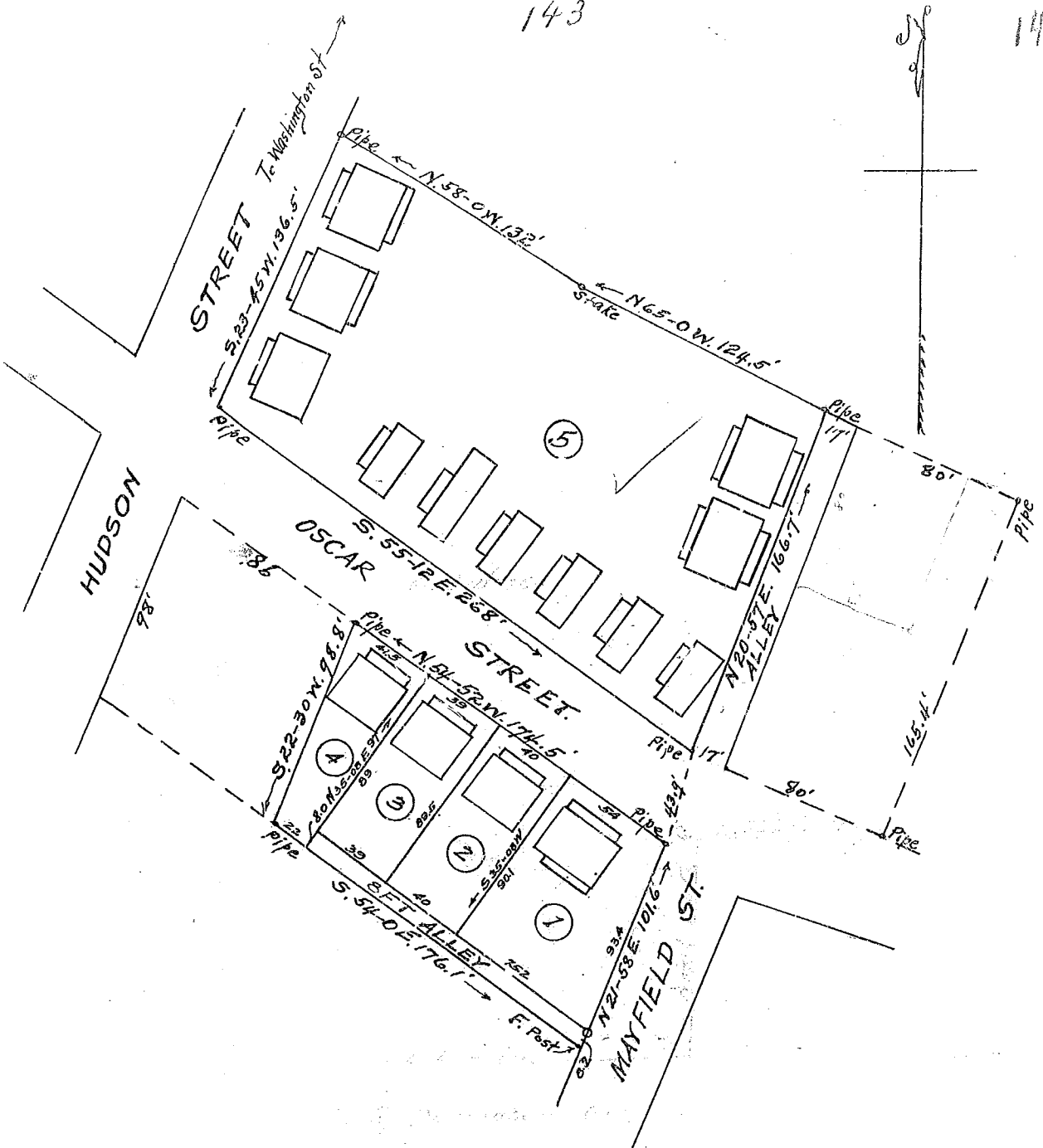


143

143

*

*



Iron Pipes at all Corners
Revision made Dec. 1, 1919.

Property of
 Parrish + Gower,
 Greenville, S. C. Scale 1"=50'-
 R. E. Dalton, Engr. Aug. 1919.
 Copied, and certified to by James R. Bates, R. M. C.
 Aug. 19th. 1919.