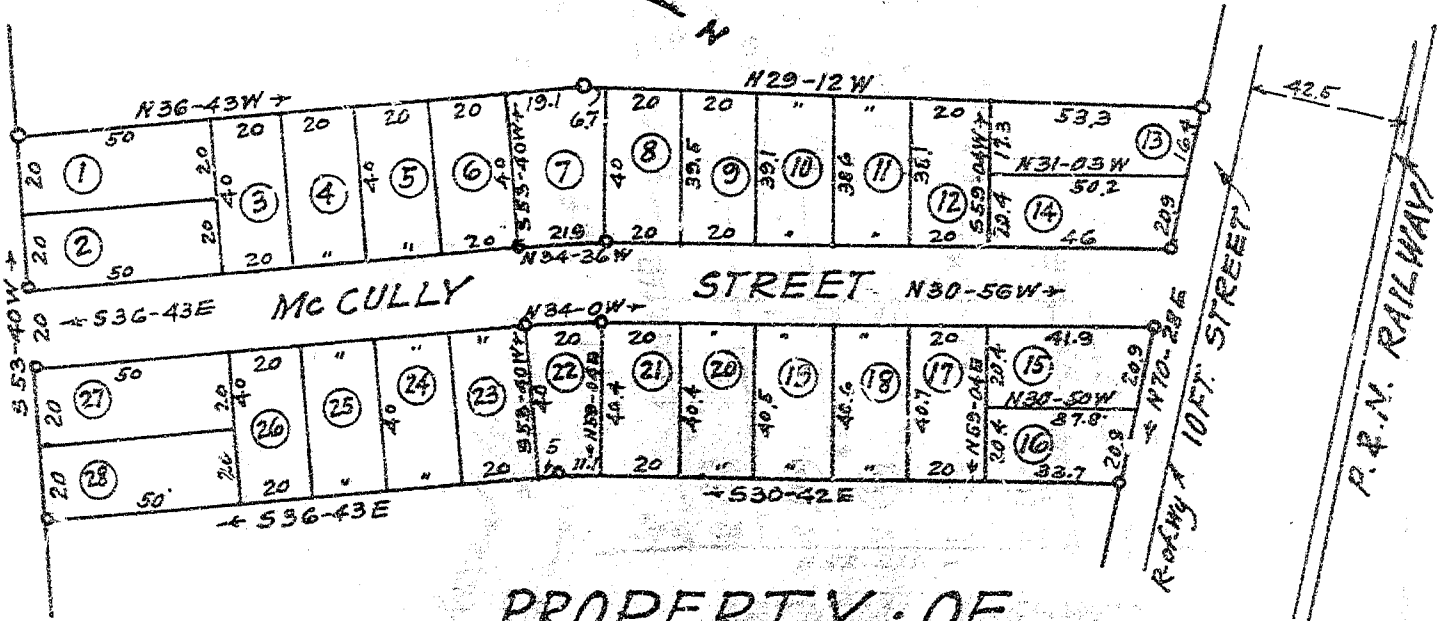


To Greenville →

NATIONAL HIGHWAY



PROPERTY OF
 BRADLEY-BONDED-WAREHOUSE-CO.
 PARIS-S-C.

BEING DIVISION LOTS 8 & 21-BLK "B"
 PROPERTY FORMERLY BELONGING TO
 REALTY-CORPORATION

Scale 1"=50' - July 1917

R.E. DALTON ENG.

F. Bl. 26
 JOB 333-3

Recorded July 19, 1917
 by R.E.D.

DAD COPY