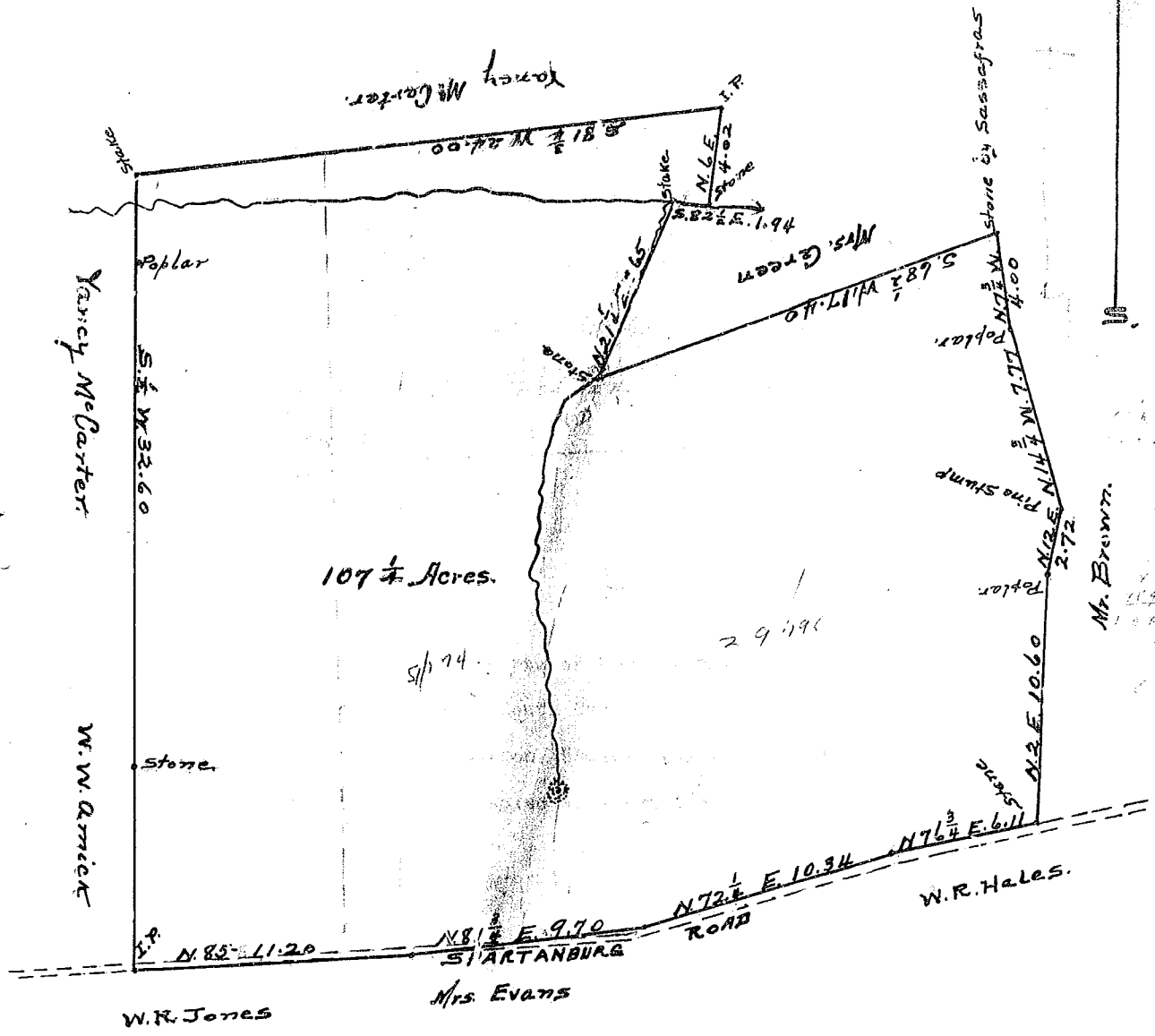


45



Scale 5 chains to 1 inch.

State of South Carolina,
Greenville County.

By request of Mrs. Annice Payne, I have surveyed the above tract of land, known as the Home Place of James McCarter, situated in the State and County aforesaid, on the Spartanburg Road, about 2 miles from the City of Greenville, containing one hundred and seven and 1/4 Acres.
Surveyed June 22d, 1917.

W.A. Adams, Surveyor.

Recorded July 5th, 1917.

Copied and certified to by

James M. Bates, Clerk.

32
60
192
192
2112
32
2145

665
330 = 1"

24
64
144
144
1584

Abc
43
505