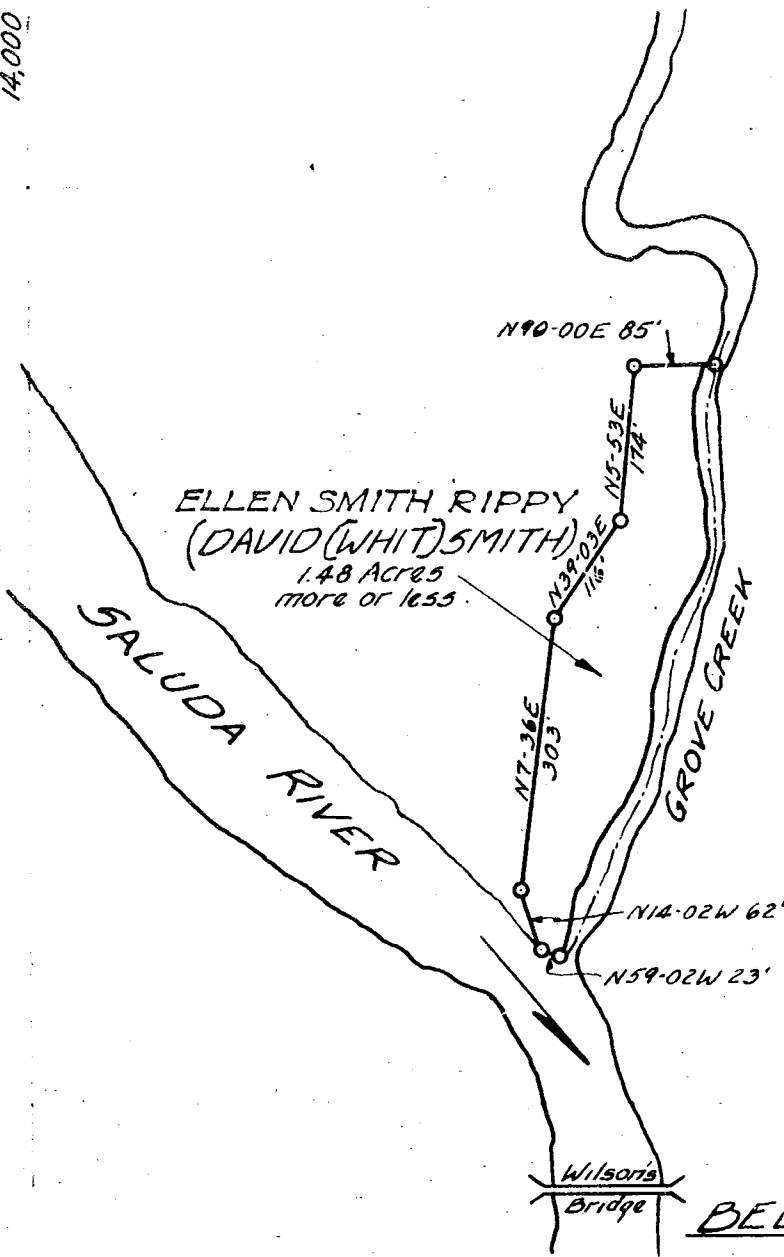


14,000

15,000

28,000

N



PAUL GOSSETT

27,000

G-23

BELTON LIGHT & POWER CO.

Ellen Smith Rippy
Greenville County S.C.

Plat showing additional land wanted for
proposed flash boards on present Dam
at Holiday's Bridge.

Plat drawn June 1934 by J.E. Surrine & Co.
from General Map of Belton Power Co.

Property made by J.E. Surrine & Co. October 1930.

Scale: 1" = 200'