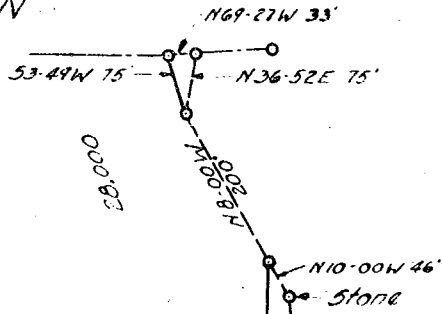
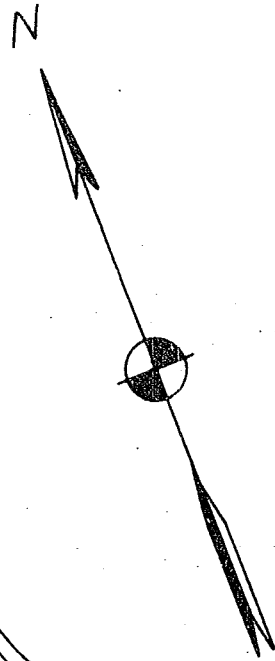


J.T. CHAPMAN



7,000

TOWARD'S

MRS DAISY HITCH

FORMERLY
(MRS L. A. POOSER)
1.26 ACRES
more or less

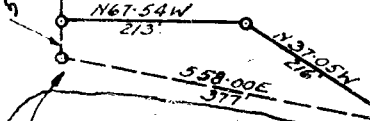
Stone

TO DAM

BELTON
POWER
CO.

E. S. COTHRAN

524-14N 44'



6,000

BELTON LIGHT & POWER CO.

MRS. DAISY HITCH
Greenville County S.C.

(G-5)

Plat showing additional land wanted for
proposed flash boards on present Dam
at Holiday's Bridge.

Plat drawn June 1934 by J.E. Surrine & Co.
from General Map of Belton Power Co.

Property made by J.E. Surrine & Co. October 1930.

Scale: -1"=200'

BELTON
POWER CO.

SALUDA RIVER