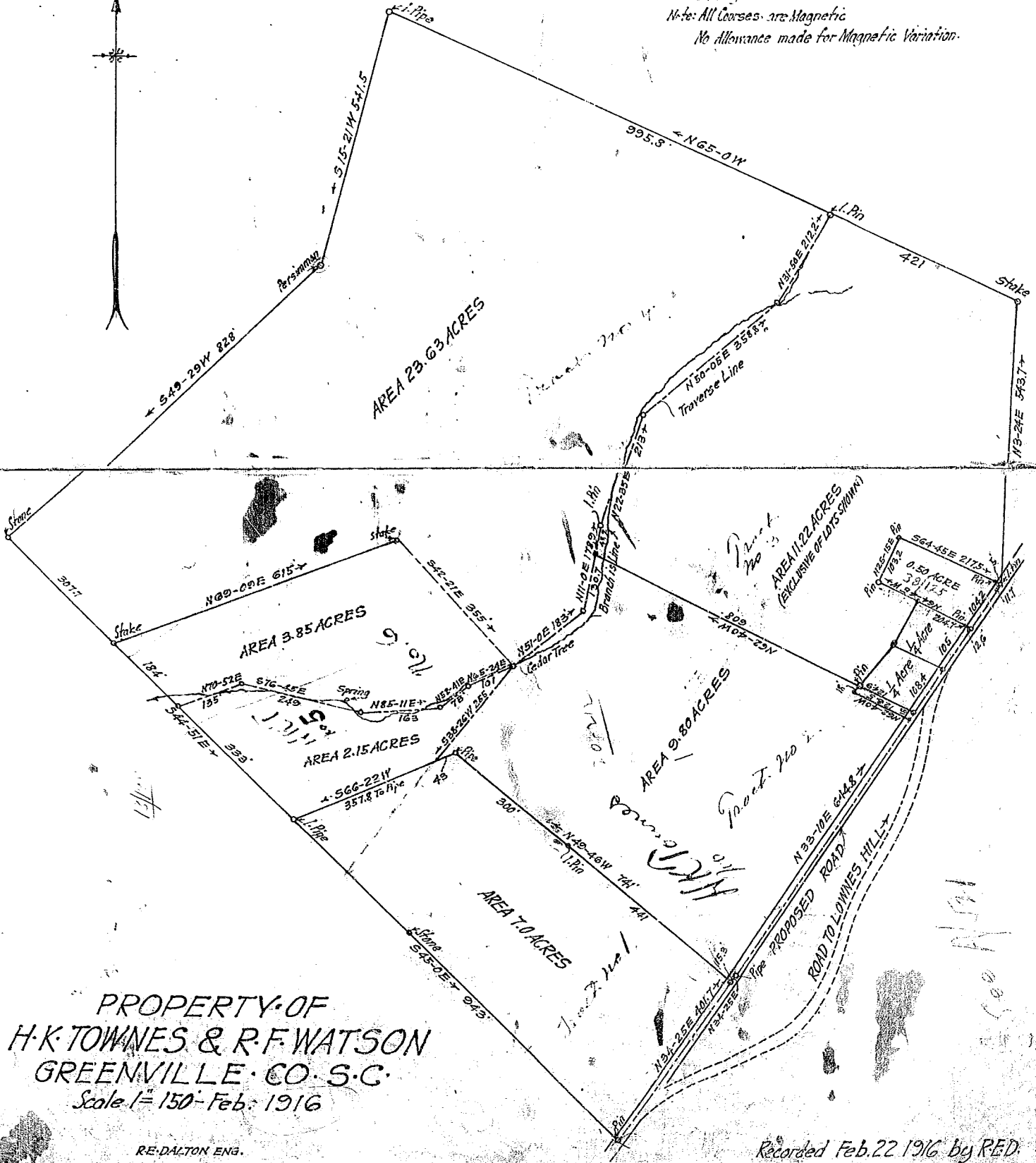




Surveyed Feb. 1916.
Note: All Courses are Magnetic
No Allowance made for Magnetic Variation.



PROPERTY OF
H. K. TOWNES & R. F. WATSON
GREENVILLE CO. S. C.
Scale 1" = 150' - Feb. 1916

RE-DALTON ENG.

Recorded Feb. 22 1916 by RED