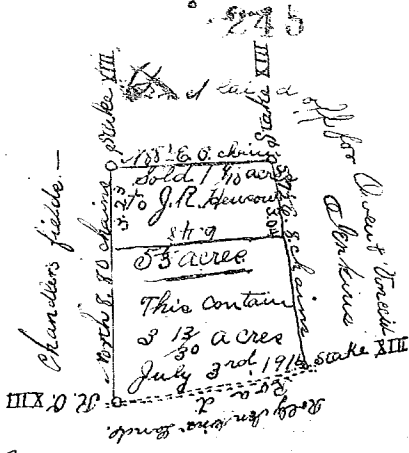


245  
N. 20  
S. 5  
Oval or chain per track



South Carolina  
 Greenville District  
 Laid off five and one third acres of Land for a Camp meeting ground off of a tract of Riley Starkins.  
 Having such shape, beatings and boundaries as the above plat represents.  
 Surveyed May 28. 1831.  
 Thomas P. Wadsworth S.S.

Recorded July 15, 1916.

*[Faint, mostly illegible handwritten text, possibly a copy of the survey description or a note.]*