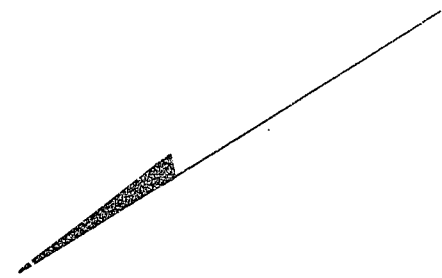
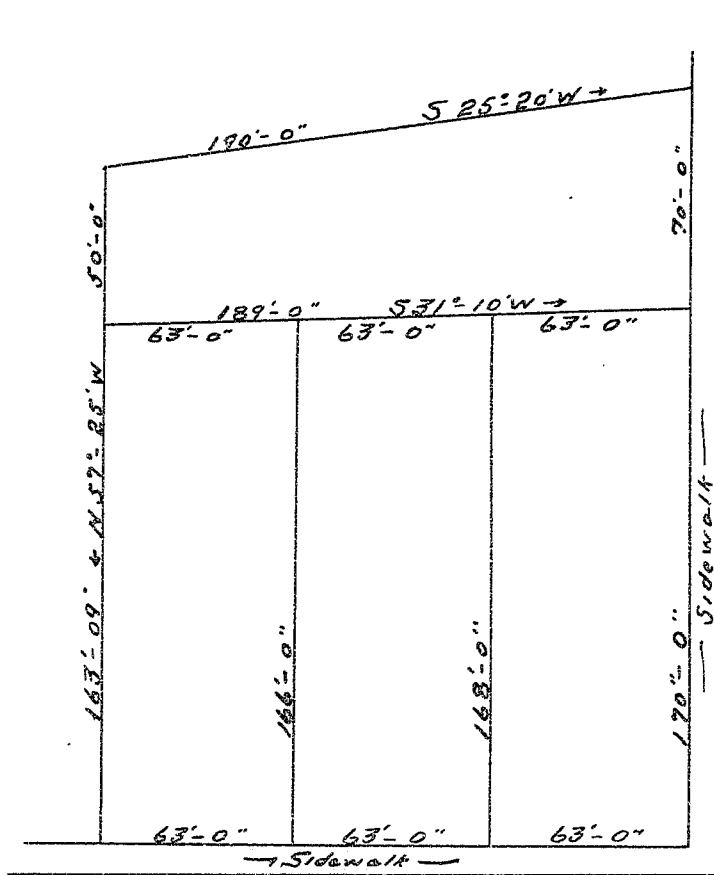
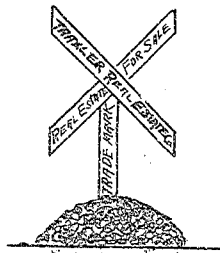


Plat Book - C - Page 85



REVISED PLAT OF LOTS
 NUMBERS 15, 16, & PART OF 17
SANS SOUCI VILLA
 FOR
F. G. SPELLMEYER
 Scale 1/2" = 40' June 20, 1913

FRANKLIN ROAD N 32° 35' E ←

YOUNG STREET S 57° 25' E →

Recorded June 20, 1913

Brodie & Bodell Engrs