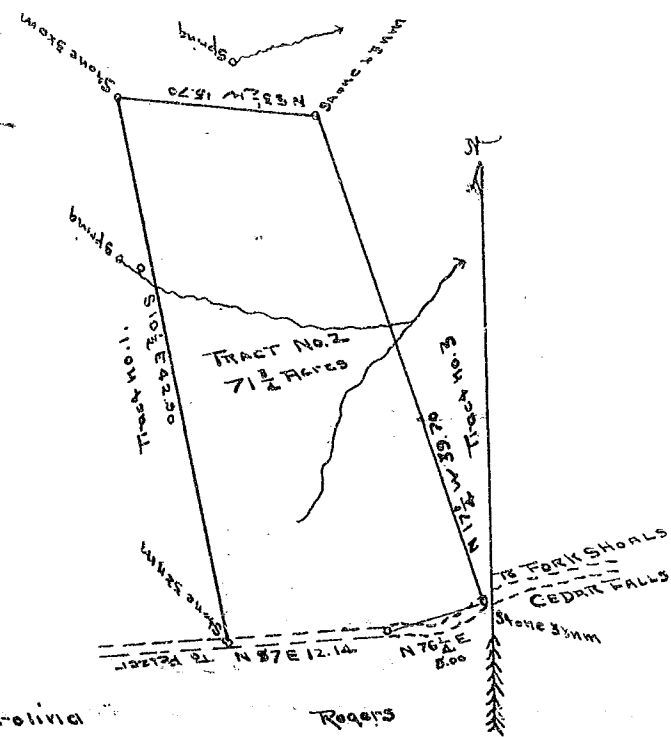


Scale 10 Chains Per inch.



State of South Carolina
Greenville County.

The above plat represents tract no 2 surveyed for
G.W. Sullivan near Fork Shoals in the State and
County aforesaid, being a part of the tract known
as the Chandler Land and a corner of the Bal-
lard tract, and contains seven and three
fourths (7 1/4) acres, having such form, marks and
boundings, as the above plat represents. Surveyed
Sept. 20, 1912.

Copied by Black & Bates

Wm F. Lee, Surveyor
Recorded for Jan. 2nd 1913.