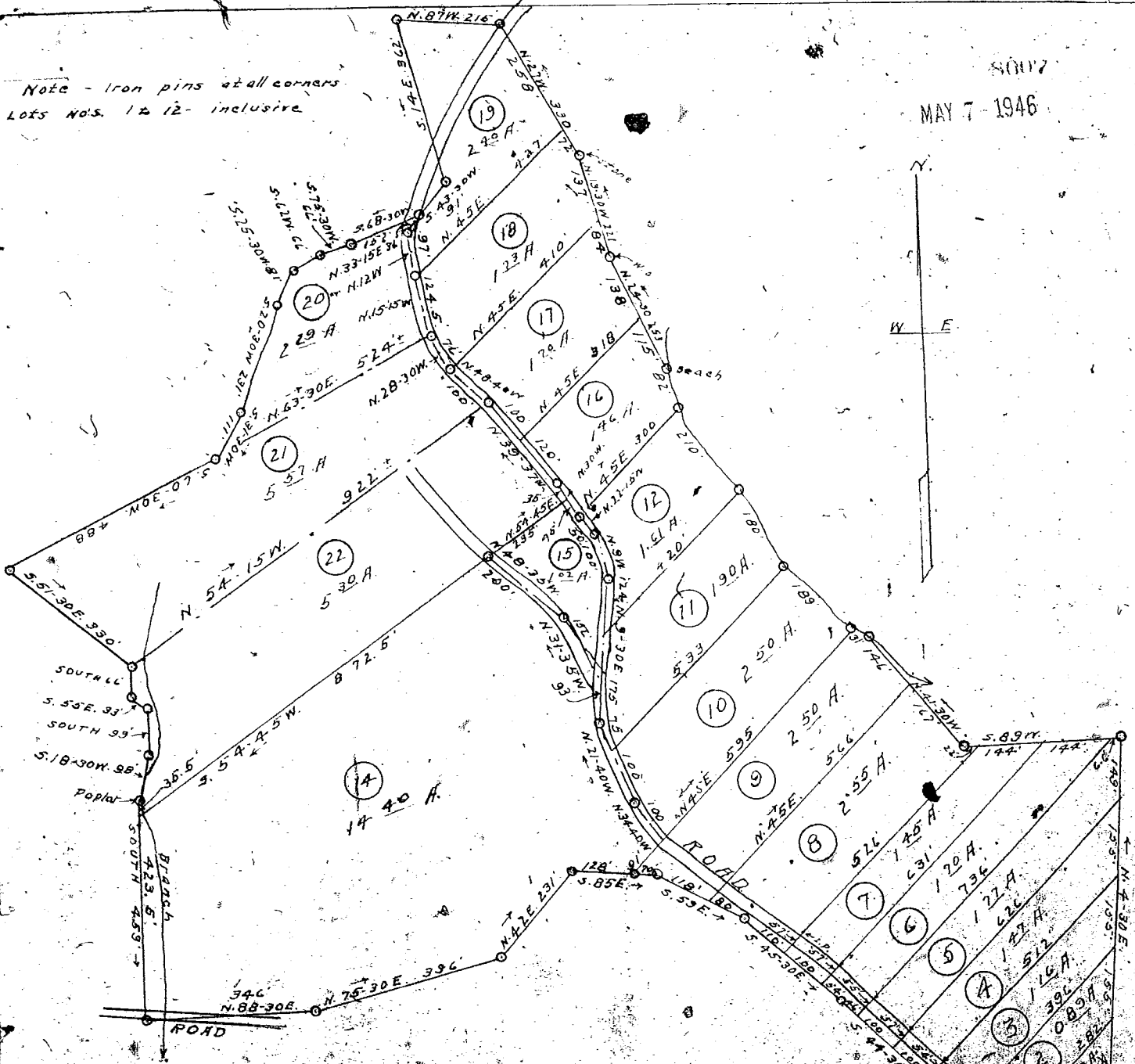


Note - Iron pins at all corners
 Lots Nos. 12-22 inclusive

8007

MAY 7 - 1946



"NOTE NO. 2" - Lot No. 13 on original plat subdivided into lots Nos. 15 to 22 inclusive and plat revised May 3, 1946. Lines dividing lots Nos. 20, 21 and 22 estimated and subject to check by actual survey.

PROPERTY OF
CENTRAL REALTY CORP.
 Greenville County, S. C.

Scale 1" = 200'
 Surveyed and plotted Oct. 1940 - Revised Aug. 1945

H. J. Middle - Surveyor

8007, Filed This 7 day of May 1946
 And Recorded in Vol. 12, Page 155 m. J. M.
 Ollie Farnsworth
 Register of Deeds Greenville County, S. C.