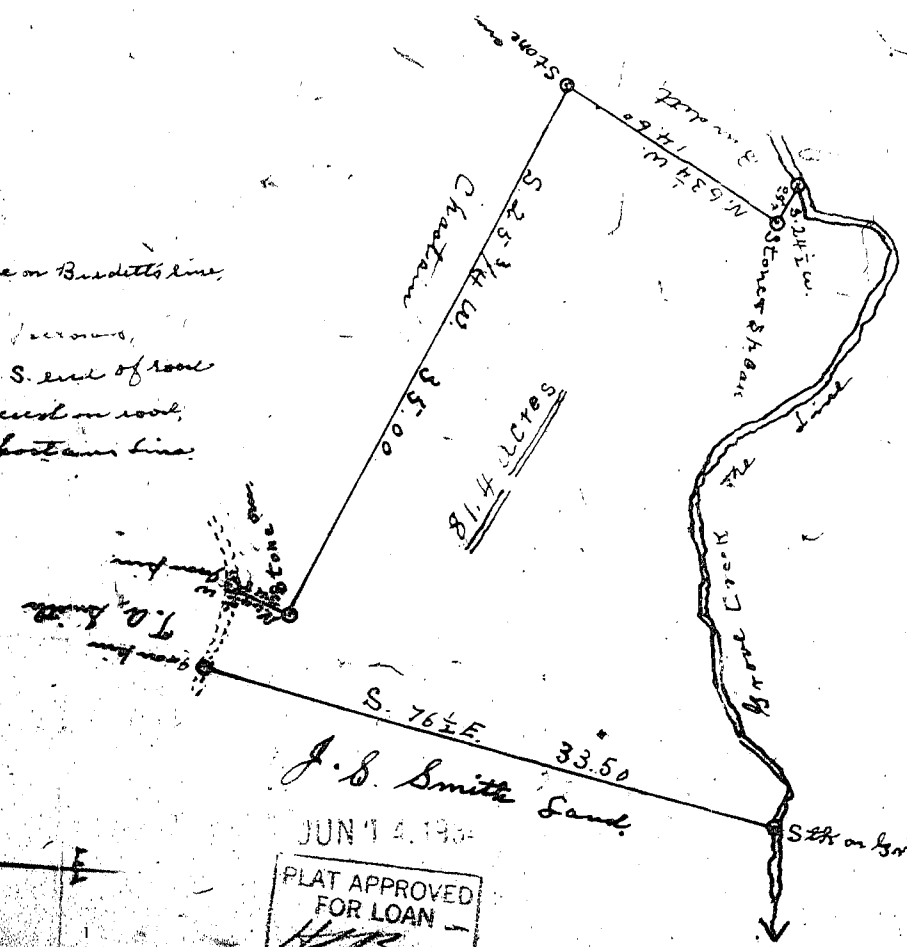


3-10353

Notes to the Crest line
beginning at stn on Crest

N. 22 1/2 E	256	to bench
V. 47 W	3.37	"
N. 30 W	3.85	"
N. 32 W	3.14	"
N. 39 W	1.00	"
N. 1 1/2 E	1.70	"
N. 8 1/2 W	3.88	"
D. 14	1.20	"
N. 23 1/2 E	3.18	"
N. 40 E	2.00	"
N. 67 E	1.50	"
N. 53 1/2 E	3.20	"
N. 57 E	1.12	"
N. 45 E	1.80	"
N. 16 1/2 E	2.80	"
N. 25 E	6.00	"
V. 42 W	1.50	"
N. 53 1/2 W	1.00	"
N. 82 W	1.00	"
S. 74 W	1.80	"
N. 8 W	1.70	stone on Breditt's line

The Road line run as follows,
Beginning at the S. end of road
N. 21 1/2 E. 3.23 to bench on road
N. 9 E. 2.35 to Chestnut line



J. S. Smith Land
JUN 14 1907
PLAT APPROVED FOR LOAN
[Signature]

South Linn County
Linn County

The above plat represents a tract of land as surveyed by me for H. H. Smith Jr on Apr. 1931. Comm. Comm. and Evg. by one and four miles 50 c. (8.14) more or less. G. G. E. E. E. E.

#12955
And Survey
G. G. E. E. E.