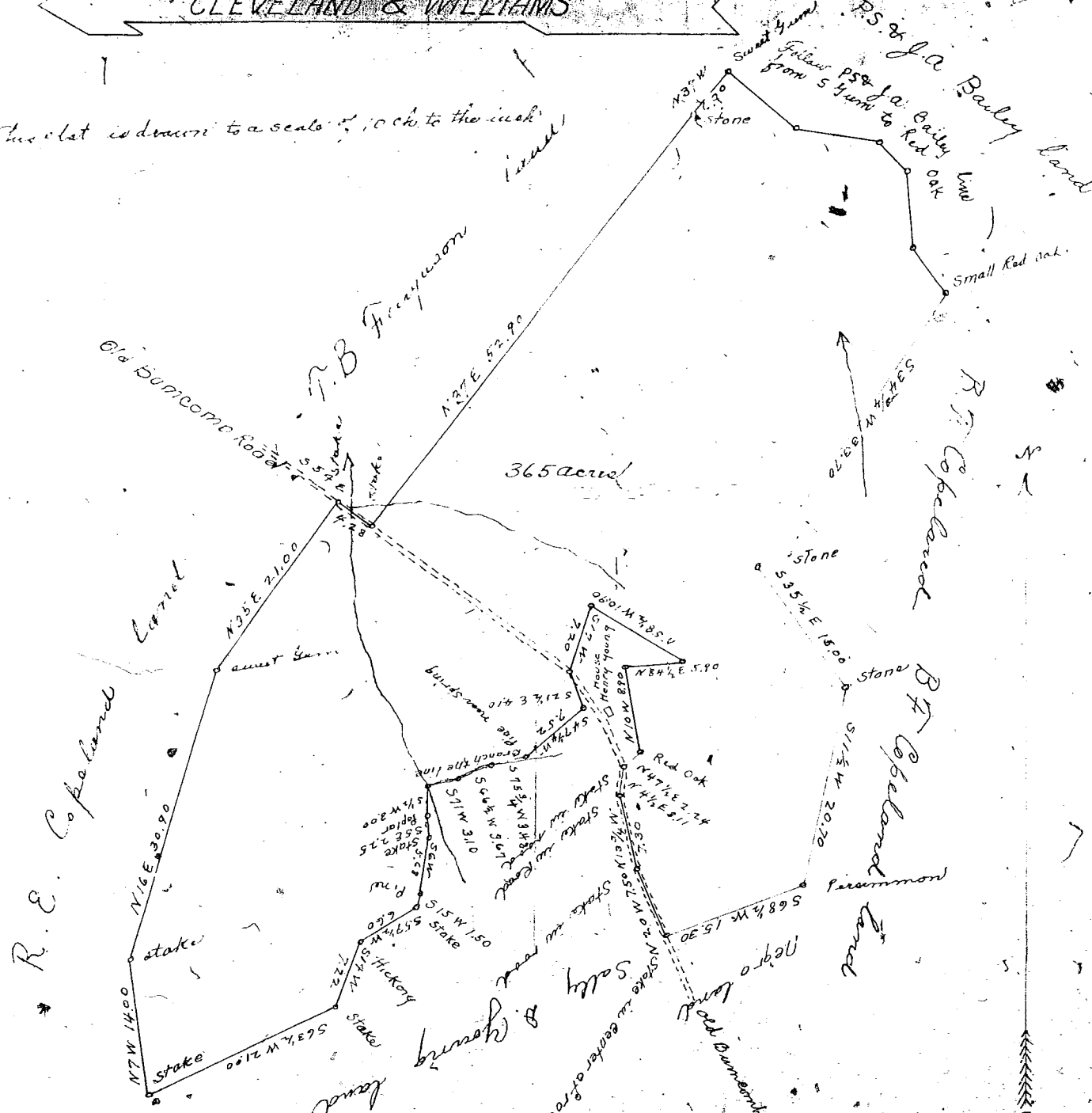


CLEVELAND & WILLIAMS

This plat is drawn to a scale of 1 inch to the acre



State of South Carolina }
 County of Laurens }
 The Above plat represents 365 acres of land situate in the foresaid state and County on the old Buncome Road near the town of Ramo on the S.A. Rail Road, and has such shape and boundaries as here shown. The red lines were run by me, and the black lines were copied from old plat made by Jas. M. Hudson (Surveyor) of Laurens, S.C. in 1899, therefore to retrace the black lines apply 1/2 degree variation to the right at this date. Surveyed for Cleveland & Williams of Greenville, S.C. this 12th day of 1909

W.W. Harris
 Surveyor

