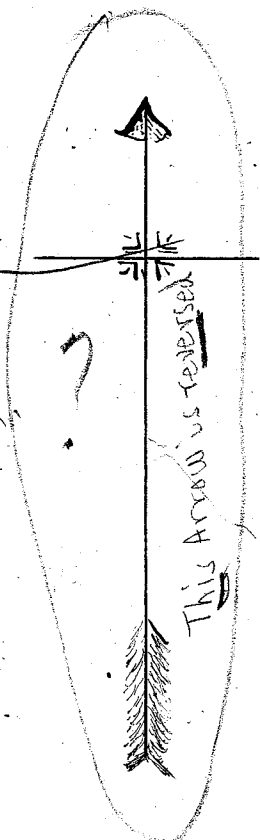
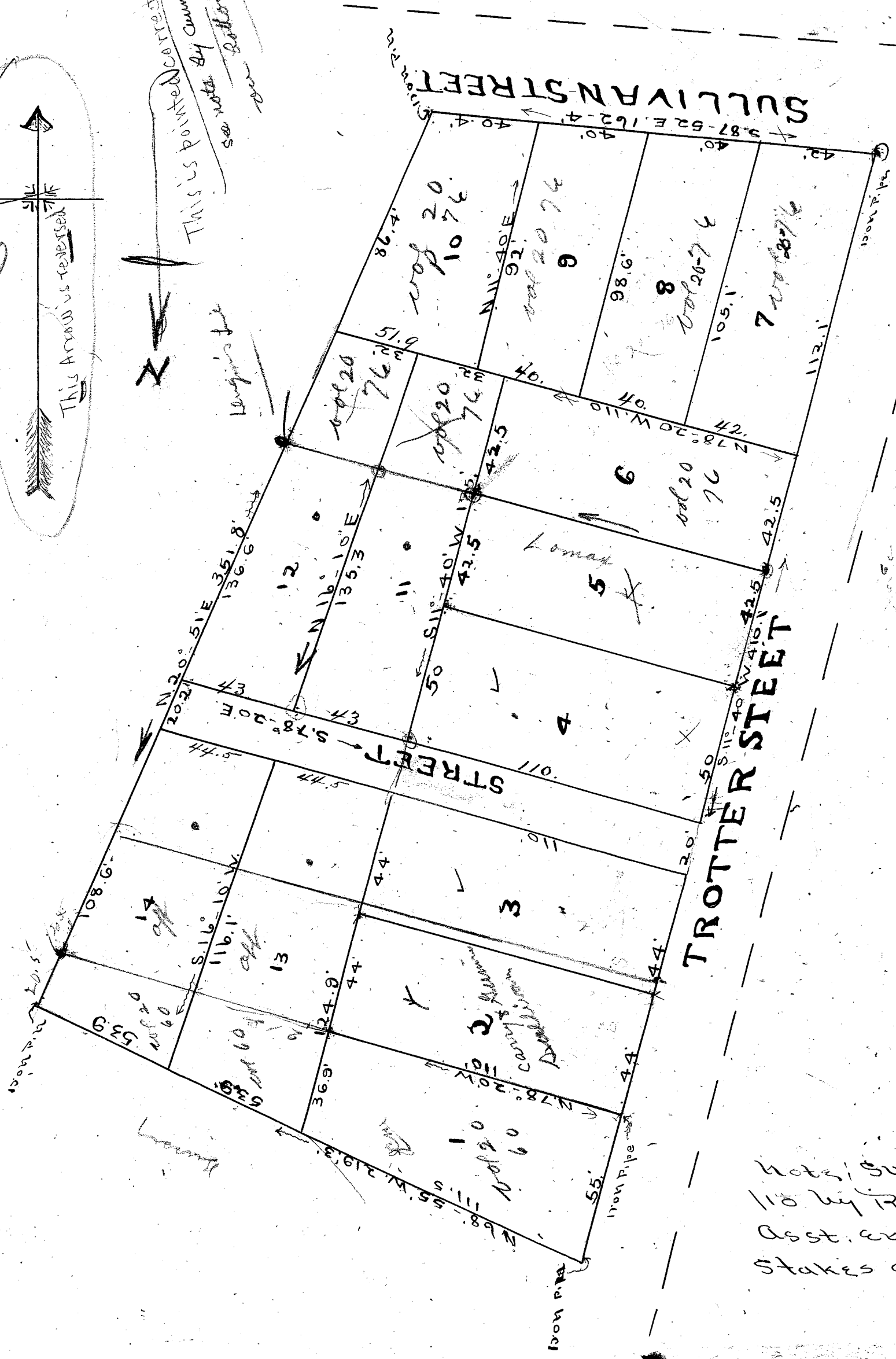


11/21/11



*This is pointed correct  
see notes by Cunningham  
bottom this page*



Black & Bates  
7-3-1911

Notes: Surveyed 1/20  
110 by R.E. Dalton  
Asst. engr. Wood  
Stakes at all corners

**W.R. SEWELL'S  
LAND.**

Map showing property of  
W.R. Sewell.  
Greenville, S.C.  
Scale 40 ft. per inch.

F.H. & J.G. Cunningham;  
Engineers and Architects.

Greenville, S.C.

Recorded July 3rd, 1911.

*This plat properly represents land  
on the N-E corner of Sullivan and  
Trotter streets, and the arrows on  
same were made & correctly reversed  
in copying. F.H. Cunningham  
by J.G. Cunningham*