

Scale 10 chs. per. inch.

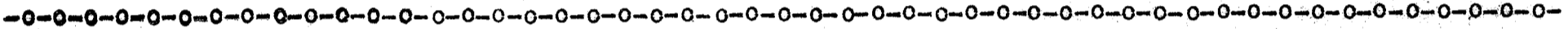
South Carolina,
Greenville County.

By the request of Frank & W.T. Berry I have surveyed and cut off the above piece of land, and find it to contain twenty-nine acres, and it hath such shapes, marks and boundaries as the above plat represents, known in the division as Tract No. 2.

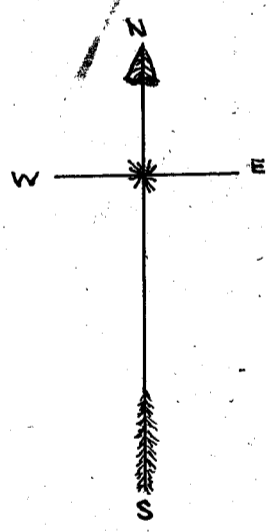
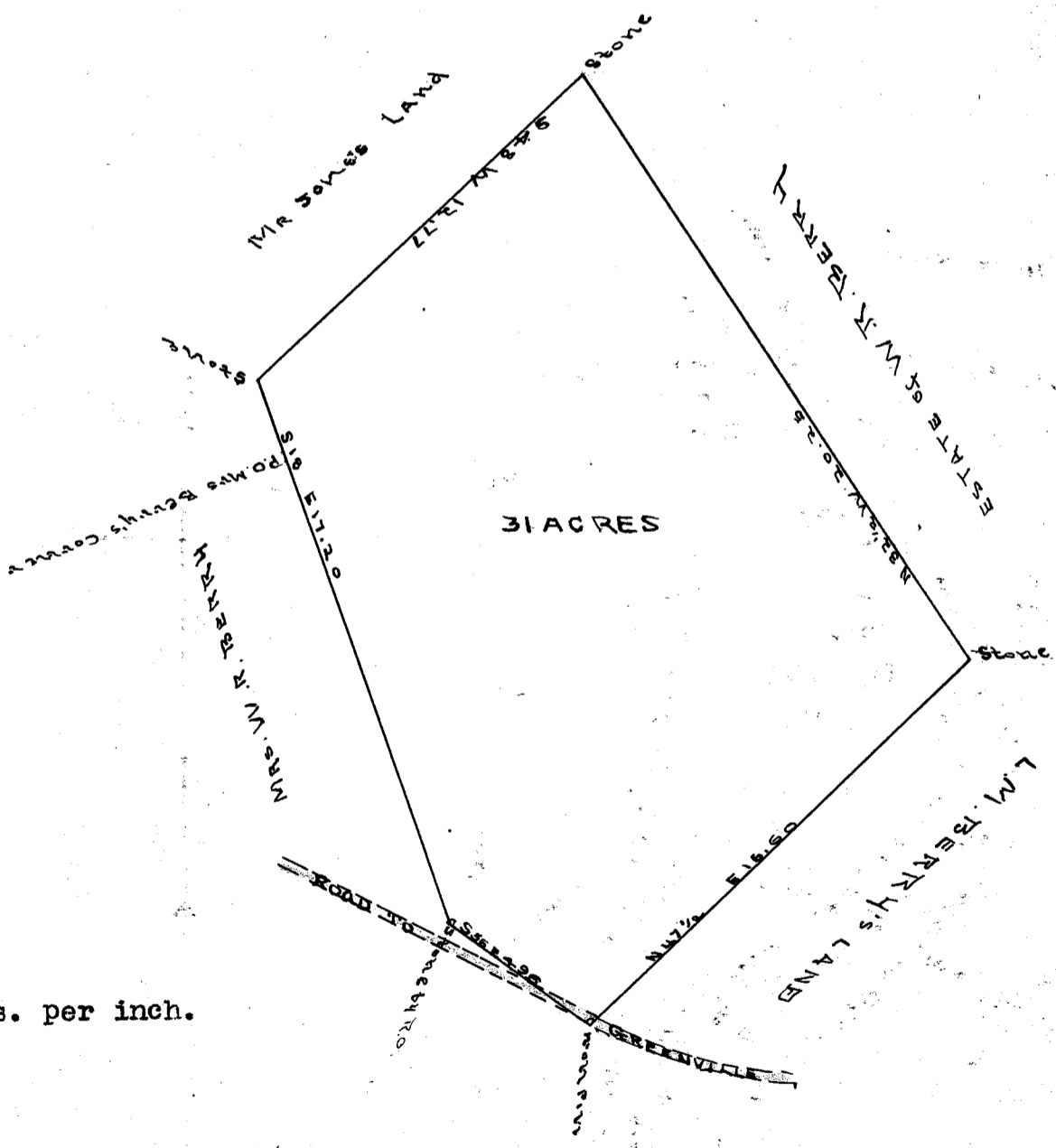
Surveyed Aug. 9th, 1910.
by W.A. Hester, Surveyor.

Recorded

and copied by Chas Huff.



486



29
31
46 3/4
68 1/2

175.0
142
33

Scale 5 chs. per inch.

State of South Carolina

County of Greenville.

At the request of the heirs of W.R. Berry I have surveyed the above tract of land situated in the State and County aforesaid, near the White Horse Road, four miles from Greenville, containing thirty-one acres, and hath such shape, marks and bounds as represented above.
Surveyed Nov. 6th, 1908.

By W.A. Adams, Surveyor.

Recorded

and copied by O.I. Black.