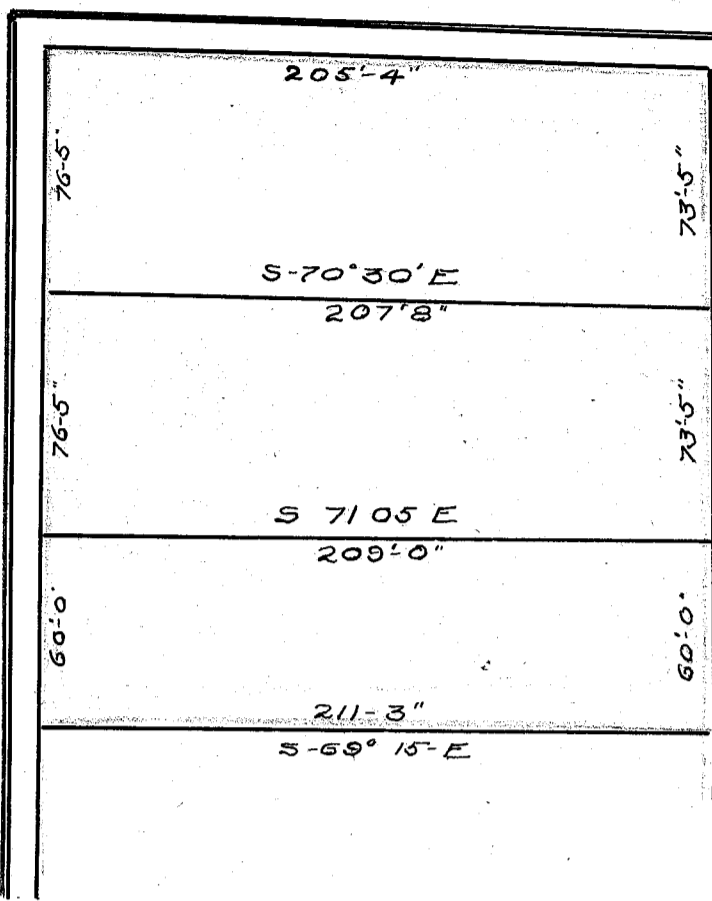


EARLE ST. S-70°27'E.

N. MAIN ST N-19°39-E.



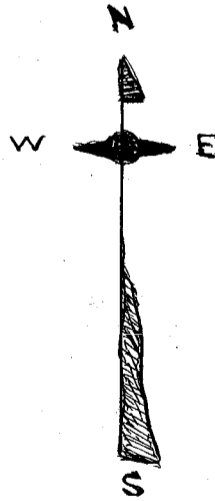
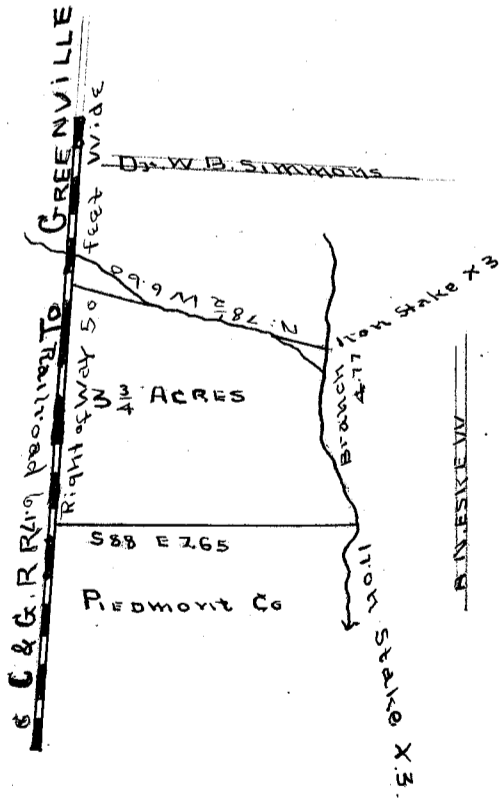
HAYNSWORTH & JOHNSTONE

1-IN = 60-FT.

ROGERS, MAY, 1911

481

Scale 5 chs. 2 1/2 inch



By Blads

State of South Carolina,
Greenville County,

Pursuant to request of an Eskew, I have surveyed a certain tract or lot of land of land for his son R. Eskew, situate in Grove township in the State and County aforesaid and I find it to contain three and three fourths (3 3/4) acres including the Right-of-Way on the Railroad and to have such form, marks and boundaries as the above plat represents.
Surveyed May 3, 1911.

Wm F. See Surveyor

Recorded 13. May 1911.