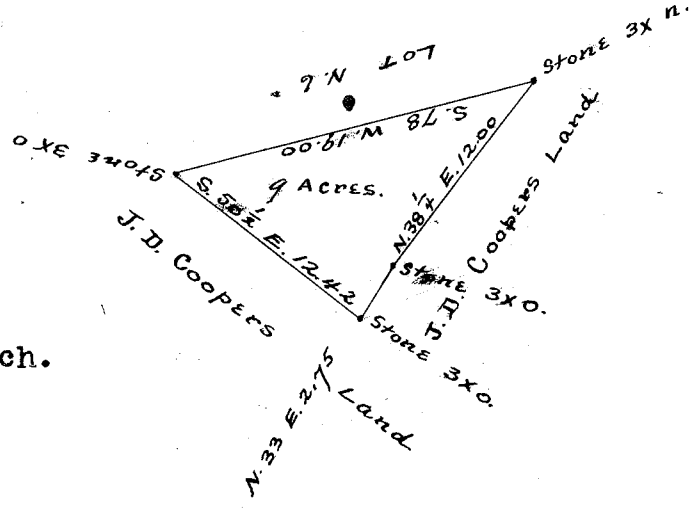
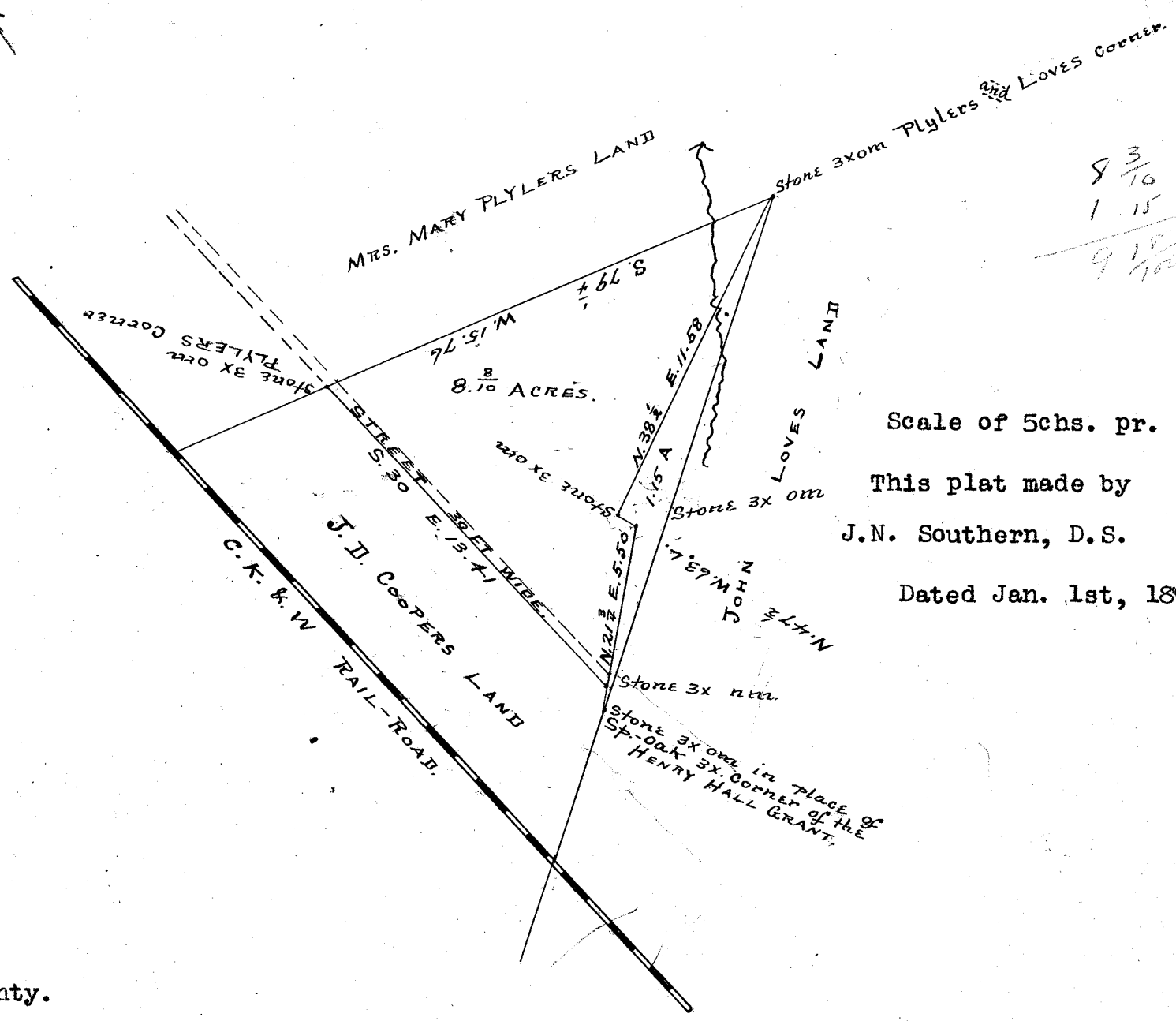


366  
31  
2780



This Plat made by Wm. A. Hudson,  
D.S. Feb. 11th, 1880.

Scale of 10 chains per inch.



8 3/10  
1 15  
9 18/10

Scale of 5chs. pr. inch.

This plat made by  
J.N. Southern, D.S.

Dated Jan. 1st, 1896.

South Carolina,

Greenville County.

The above plat represents a lot of land, situate on the Jones Gap Road, 10 miles from the City of Greenville on branch waters of Enoree River, belonging to Hamlin Beattie, Esq.

Containing Nine (9) acres and hath such shapes, marks and boundaries as the above plat represents.

Surveyed Feby. 11th, 1880.

Wm. A. Hudson, D.S.

Recorded Feby. 2nd, 1911.