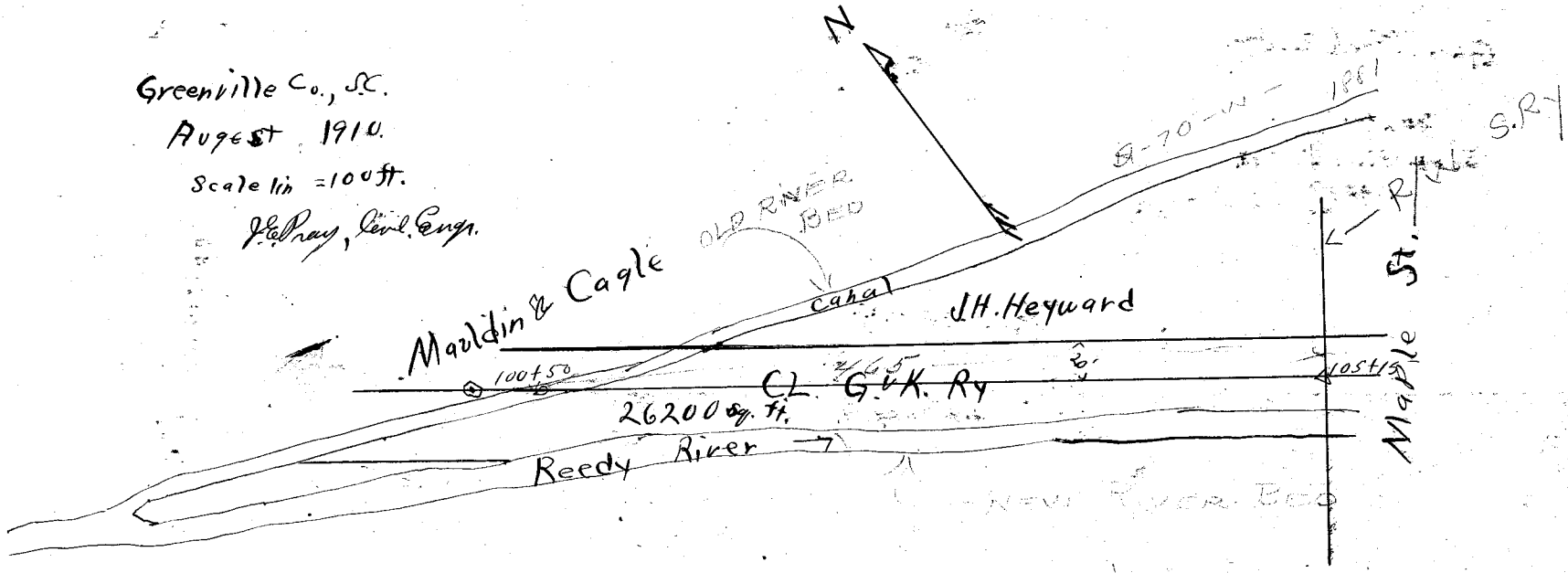


Greenville Co., S.C.

August 1910.

Scale 1 in = 100 ft.

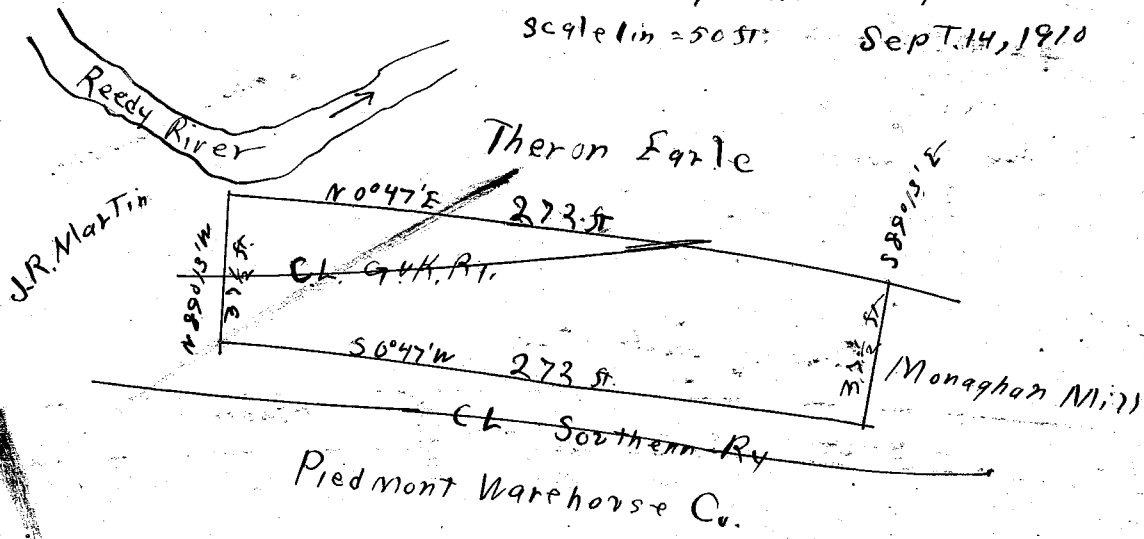
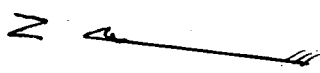
J. L. Pray, Civil Eng.



Property of Monaghan Mills

crossed by G.M. Ry,  
Near Greenville, S.C.

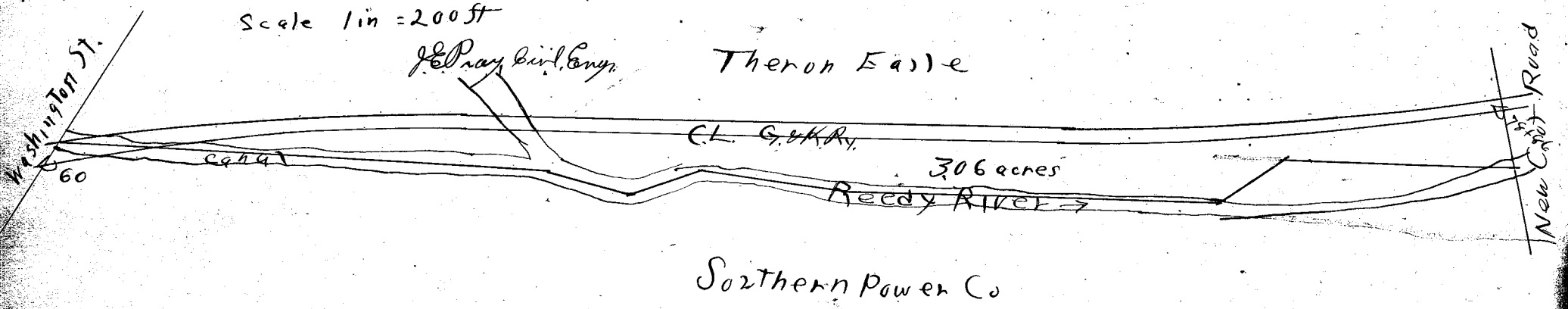
Scale 1 in = 50 ft. Sept. 14, 1910



Greenville Co., S.C.  
Oct, 1910.

Scale 1 in = 200 ft

J. L. Pray Civil Eng.



Greenville Co., S.C.

Aug 1910

Scale 1 in = 300 ft

J. L. Pray, Civil Eng.

