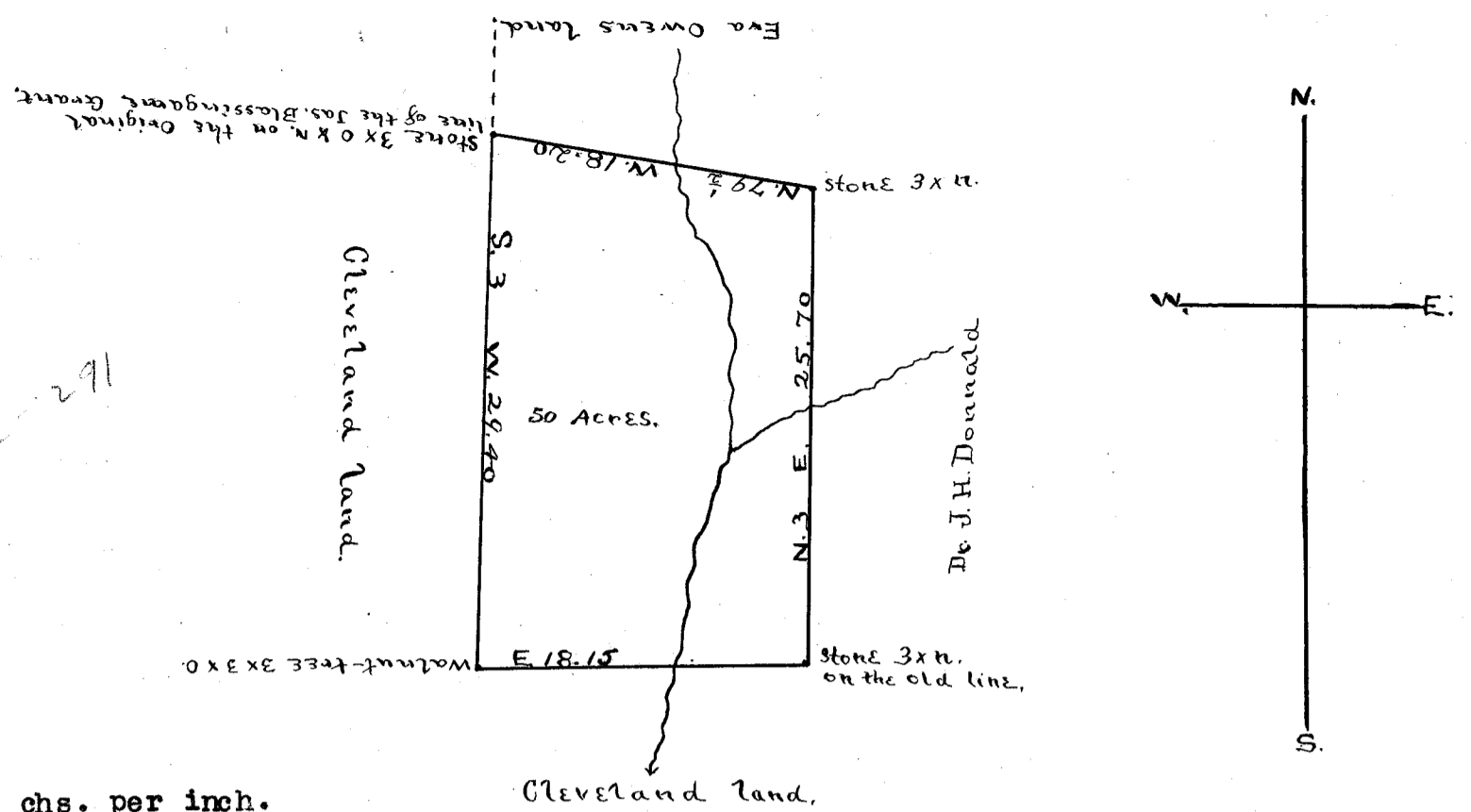


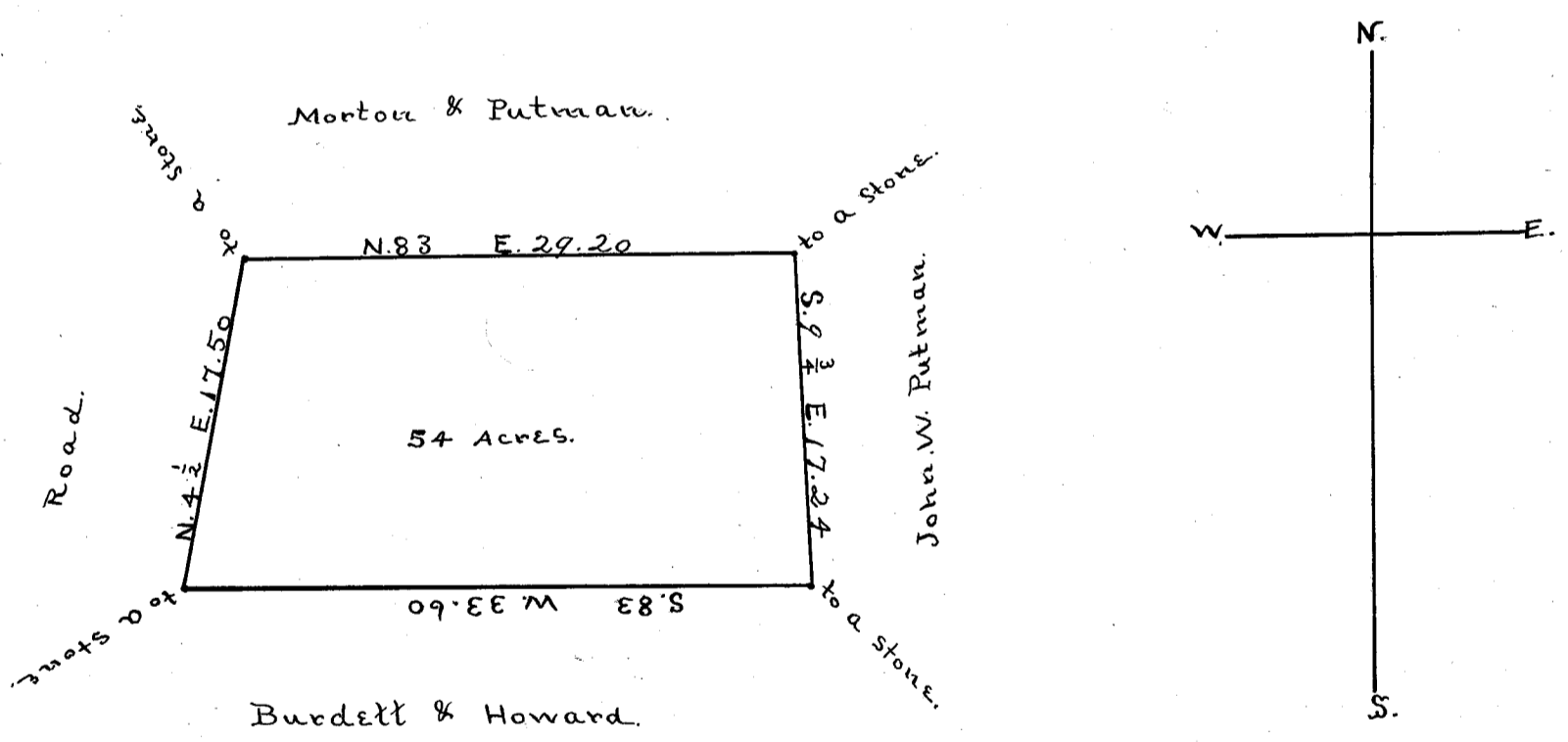
deed
222-291



Scale of 10 chs. per inch.

The State of South Carolina, County of Greenville.
 Pursuant to the request of Dr. J.H. Donald, I have surveyed a tract of land containing fifty acres, situate in the County and State above named and lying between the G. & C. Rail-road and Saluda river and on waters of the same, about six and a half miles below Greenville Court-house, said tract being purchased by S.L.W. McHugh, and hath such shapes, marks and bounds as the above plat represents,
 Surveyed the 29th, day of January 1881.
 J.N. Southern, D.S. Recorded December 3rd, 1908.
 and platted by J.B.----

283



South Carolina,
 County of Greenville.

I have this day by request of John W. Putman, Surveyed a tract of land containing fifty-four acres, which the above shapes, marks and boundaries doth represent,
 This the 21st, day of August, 1908.
 J.A. Adams,
 Surveyor. Recorded December 7th., 1908.
 and Platted by J.B.----