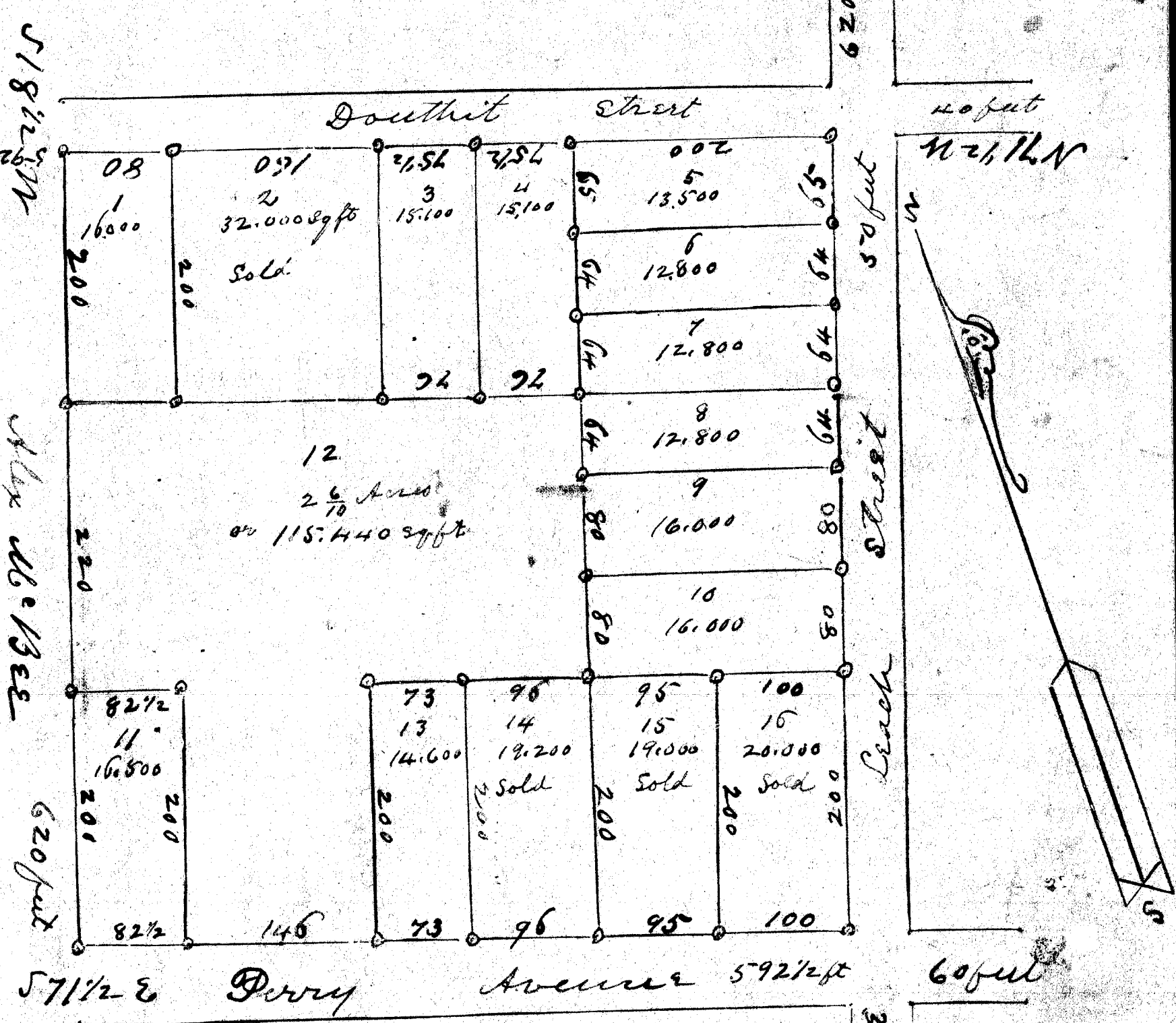


Scaled at 100 feet to an Inch



South Carolina }  
 Greenville County } The above 8 2/5 Acres of land  
 belonged to Messrs M. E. Phillips. No 2, 14, 15 & 16  
 have been sold. Messrs. Fitch, Anthony, Griffin,  
 C. E. Watson and other Trustees Prudleton St Baptist Ch

Surveyed May 20<sup>th</sup> 1905

Wm A. Hudson  
 D. S.