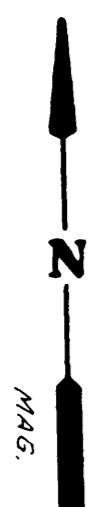
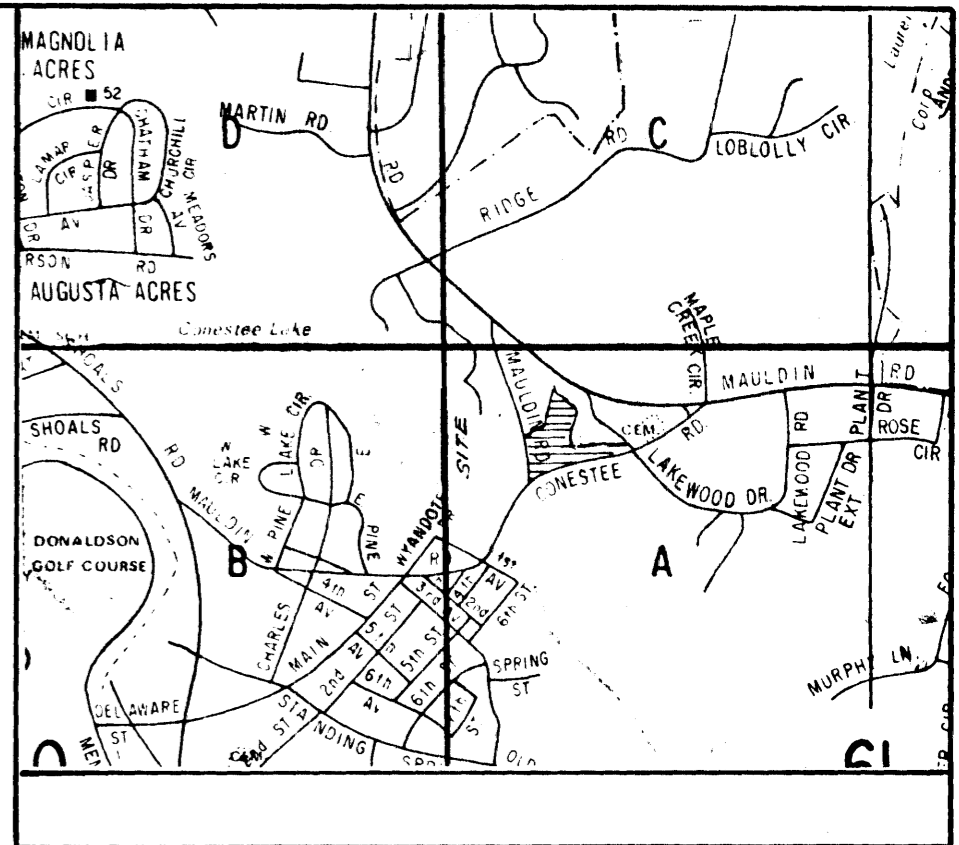


12412

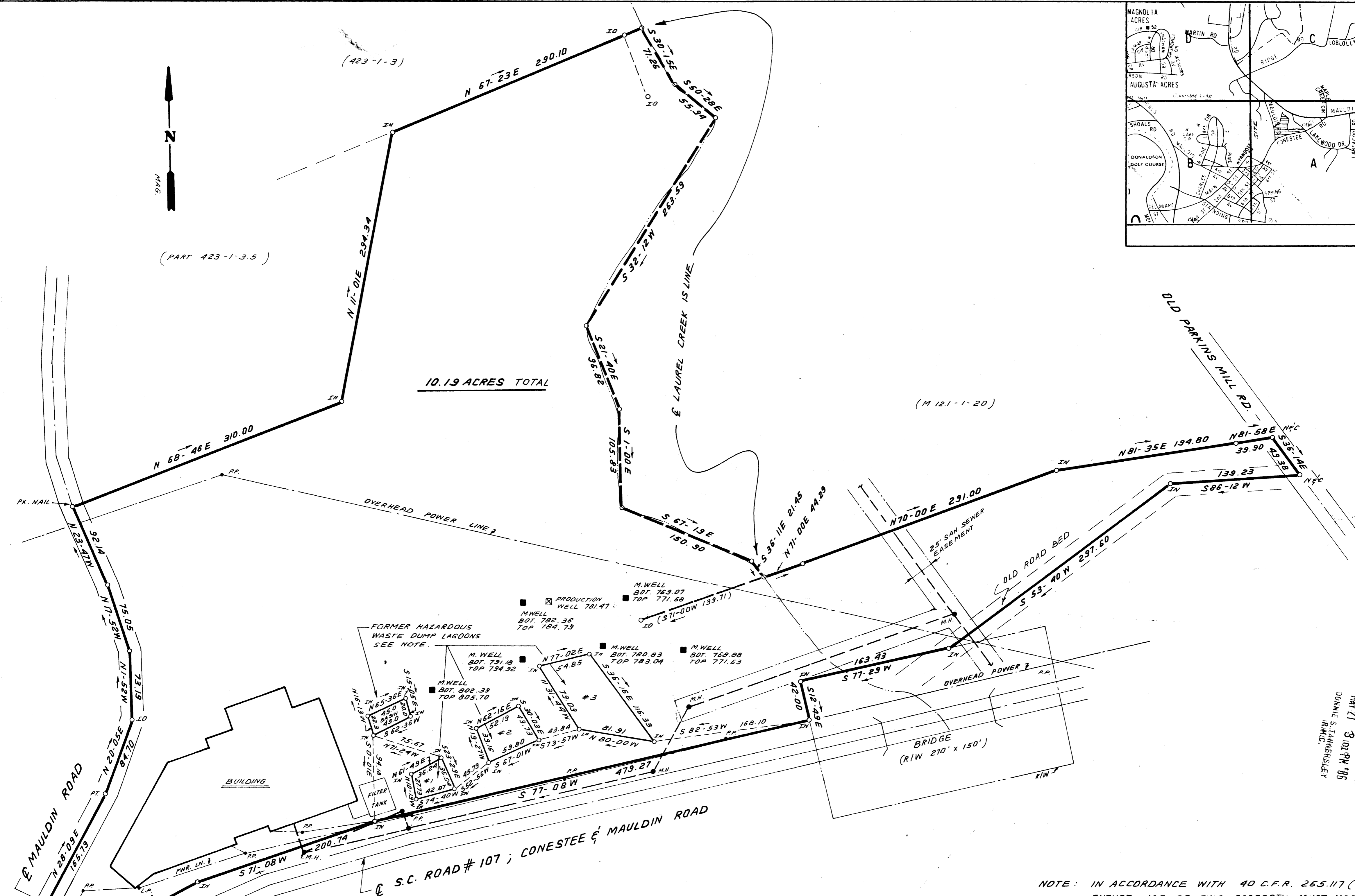


(PART 423-1-3.5)

(423-1-3)

10.19 ACRES TOTAL

(M 121-1-20)



FILED  
MAY 21 3 02 PM '86  
DONNIE S. TANNER/SLY  
R.M.C.

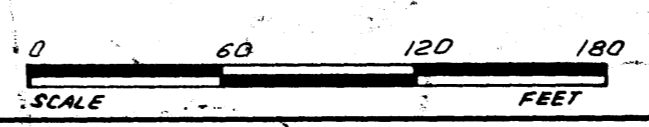
NOTE: IN ACCORDANCE WITH 40 C.F.R. 265.117 (c), FUTURE USE OF THIS PROPERTY MUST NOT DISTURB THE INTEGRITY OF THE FINAL COVER OR ANY OTHER COMPONENT OF ANY CONTAINMENT SYSTEM OR OF THE MONITORING SYSTEM.

- # 1 = 1243 SQ. FT.
- # 2 = 2309 SQ. FT.
- # 3 = 5348 SQ. FT.
- BASIN = 336 SQ. FT.

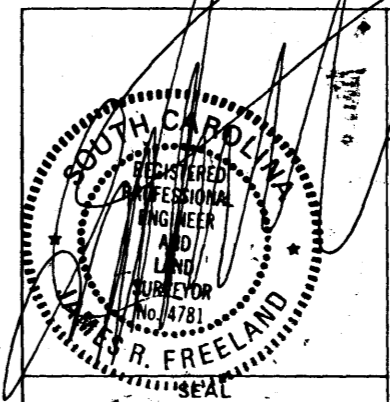
NOTE: HAZARDOUS WASTE DUMP LAGOONS LOCATED BY CLIFF ROY OF ROY METAL PRODUCTS.

THIS PLAT IS NOT A SUBDIVISION AS DEFINED BY THE GREENVILLE COUNTY SUBDIVISION REGULATIONS.  
5/21/86 *J.R. Freeland*  
Chief, Secretary, or Director of Planning  
Greenville County Planning Commission

I hereby certify that the ratio of precision of the field survey is 1/5,000 as shown hereon and the area was determined by DMD Method.  
*James R. Freeland*  
James R. Freeland RLS & PE 4781



REVISED: 12-9-85



STATE OF SOUTH CAROLINA  
GREENVILLE COUNTY

SURVEY FOR  
DON ROY

FREELAND & ASSOCIATES Engineers & Land Surveyors GREENVILLE, S.C.	
SURVEY	B.G.
DRAWN	B.F.
CHECK	M.C.
SCALE	1" = 60'
DATE	3-11-85
DWG. NO.	12412 5.00CT

38599

MAY 21 1986

12-P-41

MICROFILMED