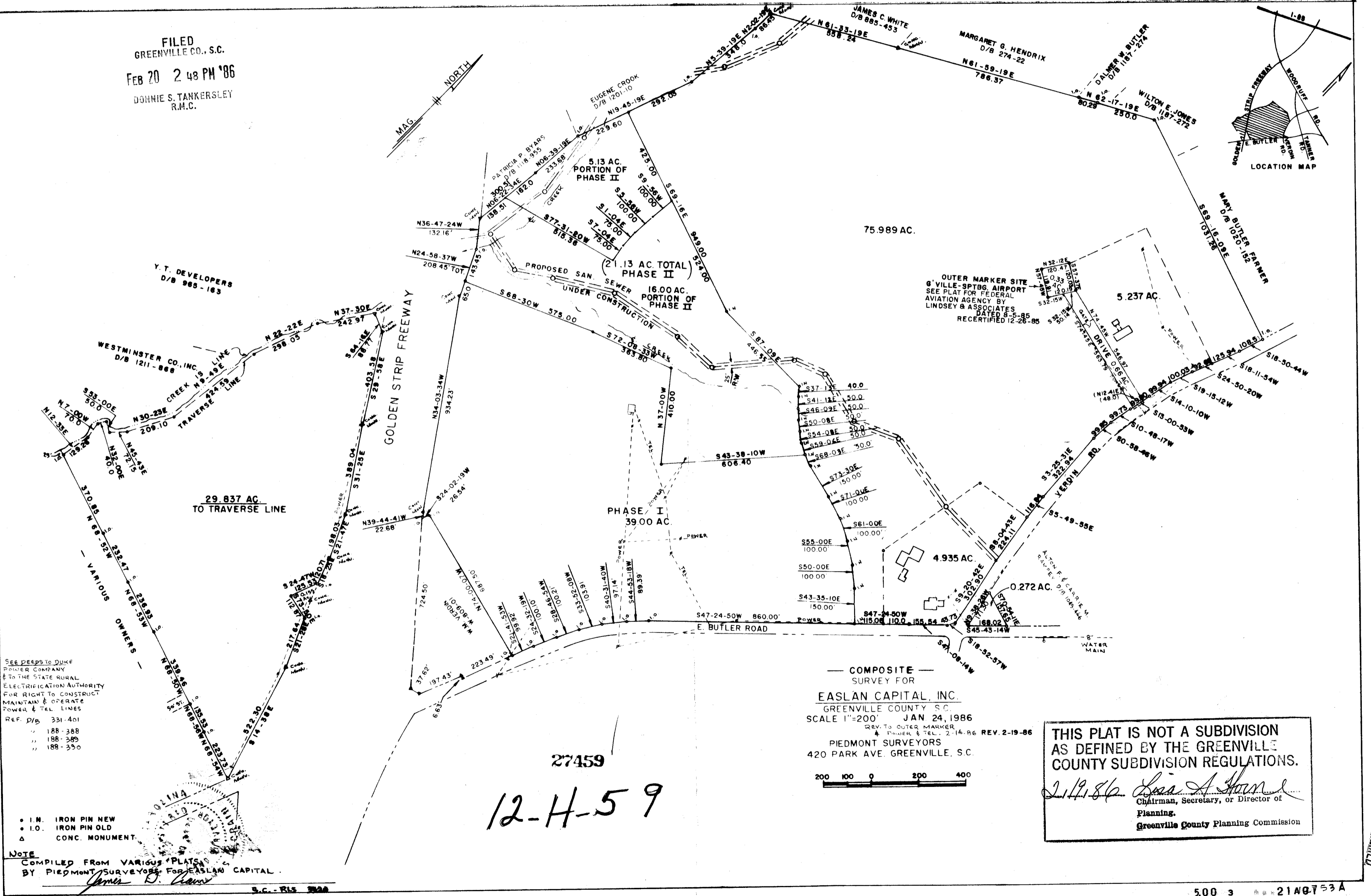
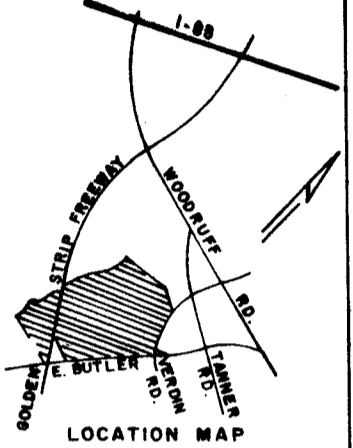


FILED
GREENVILLE CO., S.C.
FEB 20 2 48 PM '86
DOHNIE S. TANKERSLEY
R.M.C.



SEE DEEDS TO DUKE POWER COMPANY & TO THE STATE RURAL ELECTRIFICATION AUTHORITY FOR RIGHT TO CONSTRUCT MAINTAIN & OPERATE POWER & TEL. LINES
REF. D/B 331-401
" 188-388
" 188-389
" 188-350

• I.M. IRON PIN NEW
• I.O. IRON PIN OLD
▲ CONC. MONUMENT

NOTE
COMPILED FROM VARIOUS PLATS BY PIEDMONT SURVEYORS FOR EASLAN CAPITAL
James D. Davis
S.C. - RLS 3000

COMPOSITE SURVEY FOR
EASLAN CAPITAL, INC.
GREENVILLE COUNTY, S.C.
SCALE 1"=200' JAN 24, 1986
REV. TO OUTER MARKER & FINISH & TEL. 2-14-86 REV. 2-19-86
PIEDMONT SURVEYORS
420 PARK AVE. GREENVILLE, S.C.

THIS PLAT IS NOT A SUBDIVISION AS DEFINED BY THE GREENVILLE COUNTY SUBDIVISION REGULATIONS.
L. A. Stone
Chairman, Secretary, or Director of Planning.
Greenville County Planning Commission

27459
12-H-59