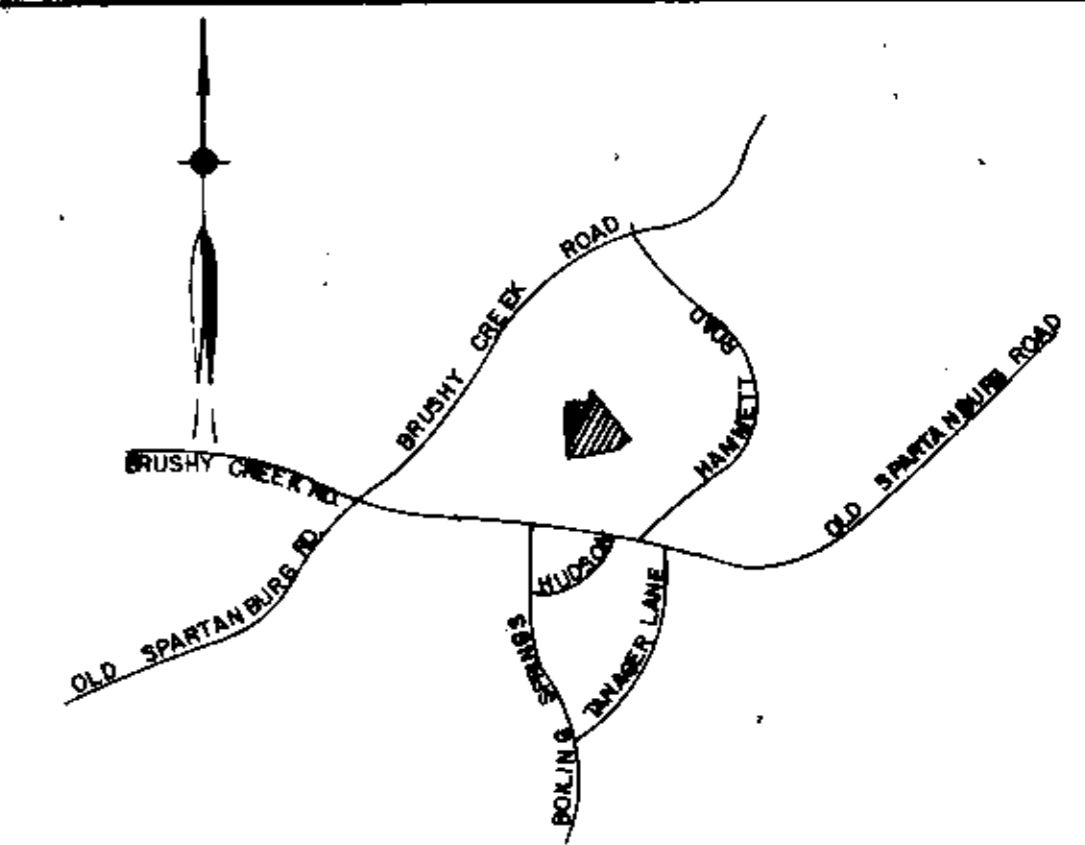
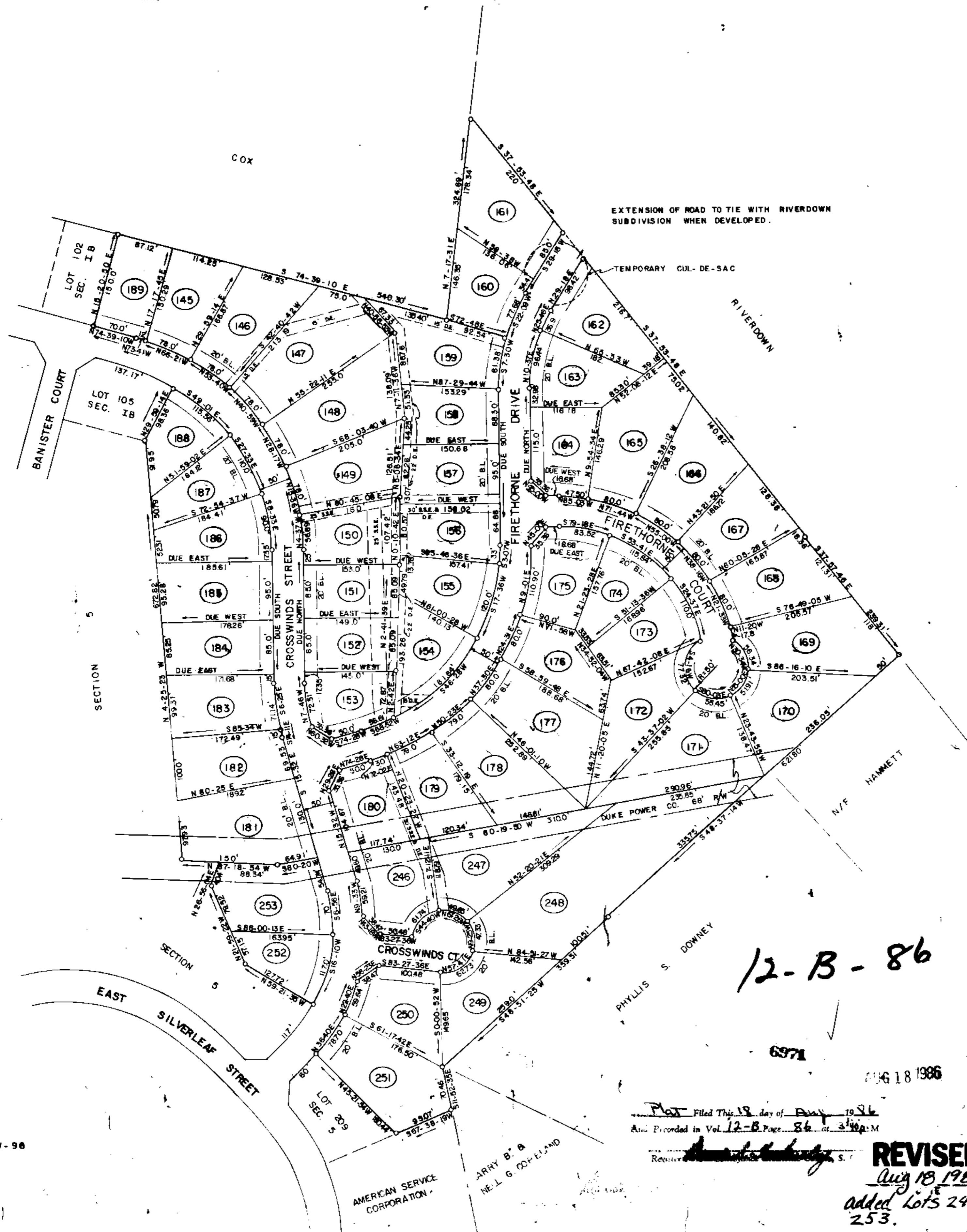


Aug 13 3 40 PM '86
R.M.C.



LOCATION MAP

FINAL PLAT

CERTIFICATE OF OWNERSHIP AND EASEMENT
I, the undersigned, being duly qualified to execute this instrument, do hereby certify that the above described lots are the property of the undersigned and that the same are being offered for sale to the public use as roads, streets, and easements, forever as shown or indicated on this plat.

3-19-84
Name: *C.W. Dalton*
Signed: _____
Signed: _____
Signed: _____

CERTIFICATE OF ACCURACY

I, **R.W. DALTON**, certify that this plat was prepared and drawn under my supervision and that the same are true and correct as shown on the plat and as described in the plat. I further certify that the owner of the lots shown on this plat was prepared in accordance with the Greenville County Subdivision Regulations as amended.

3-19-84
Date: _____
LIC. No. 916

CERTIFICATE OF APPROVAL FOR RECORDING

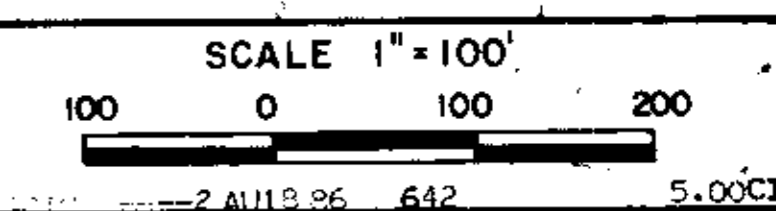
I hereby certify that the subdivision plat shown hereon complies with the Subdivision Regulations for Greenville County, with the exception of such variance, if any, as is shown on the plat of the Greenville County Planning Commission of Greenville County, South Carolina, and that it has been approved for recording in the office of the County Registrar of Meigs County.

MARCH 21, 1986
DATE: *Aug 18, 1986*
John P. ...
DIRECTOR OF PLANNING
Lisa A. Horne
GREENVILLE COUNTY PLANNING COMMISSION

FILE NUMBER
84-122

SILVERLEAF
SECTION 4

AMERICAN SERVICE CORP. OWNER	DALTON & NEVES CO. ENGINEERS
NO. OF ACRES 25	MILES OF NEW ROAD 0.56
NO. OF LOTS 53	DATE AUGUST 13, 1986
ZONED R-12	



12-B-86

Plat Filed This 18 day of Aug 1986
And Recorded in Vol. 12-B Page 86 at 3:40 PM
Revised
Aug 18 1986
Added Lots 246-253.

Plat Revised August, 1986.
Recorded R.M.C. Office 8-86.
Recorded R.M.C. Office 3-21-84, 9W-96
5' Drainage & Utility Easement Along All Rear B Side Lot Lines.
Iron Pins At All Corners.
BLOCK BOOK REF. 538.7-1-13