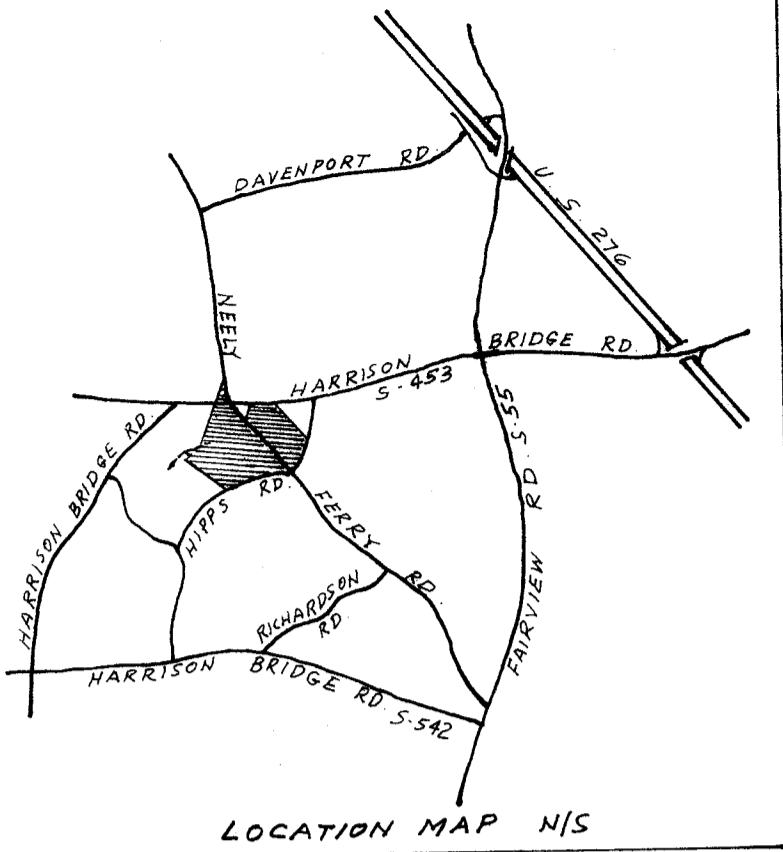


FILED  
GREENVILLE CO., S.C.  
Nov 18 8 47 AM '85  
DONNIE S. TANKERSLEY  
R.M.C.

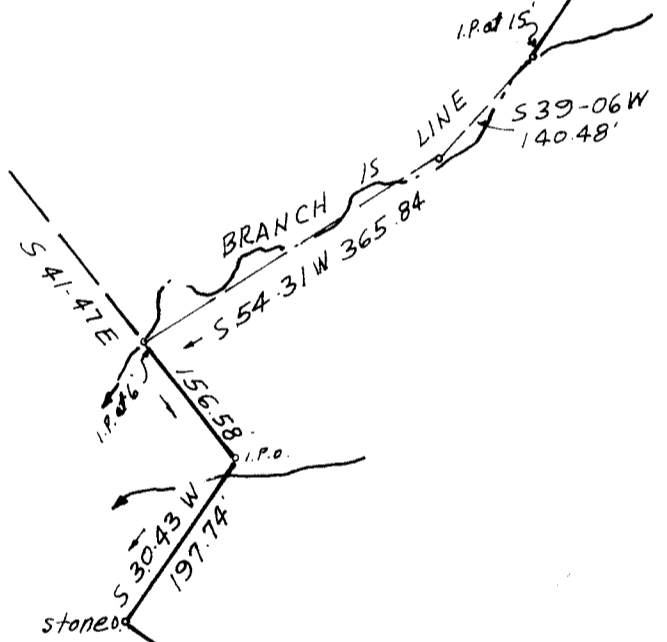


TRACT 5  
0.51 Acres ± Roads  
0.25 Acres ± in Roads  
0.26 Acres ± Net

TRACT 6

TRACT 4  
26.90 Acres ± Roads  
2.48 Acres ± in Roads  
24.42 Acres ± Net

TRACT 3  
76.43 Acres ± Roads  
2.55 Acres ± in Roads  
73.88 Acres ± Net



JOHN D. B. 809-213 HOLLINGSWORTH P.B. 77-5

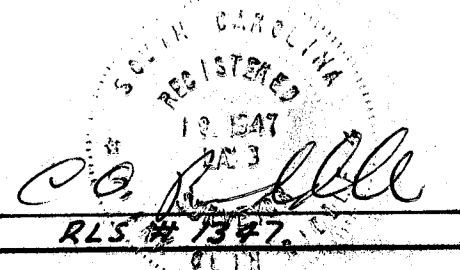
NOTE: TRAVERSE POINTS IN ROADS ARE NAILS & BOTTLE CAPS UNLESS OTHERWISE NOTED.

LOT 4A SURVEYED & PLAT REVISED 8/28/85

I CERTIFY THAT THE RATIO OF PRECISION OF THE FIELD SURVEY IS 1/5000 AND AREA WAS COMPUTED BY DMD METHOD.

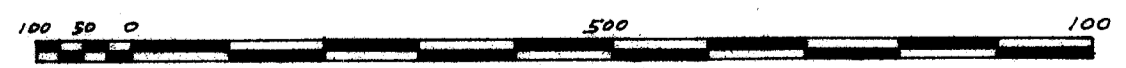
NOV 18 1985

11X-65  
17054



THIS PLAT IS NOT A SUBDIVISION AS DEFINED BY THE GREENVILLE COUNTY SUBDIVISION REGULATIONS.  
11/14/85 *Lisa A. Stone*  
Chairman, Secretary, or Director of Planning.  
Greenville County Planning Commission

SURVEY FOR  
**ALMEADE D. MARTIN ESTATE**  
NEAR SIMPSONVILLE - GREENVILLE CO. S.C.  
MARCH 22, 1984  
SCALE 1" = 200'



C.O. RIDDLE SURVEYING CO., Greenville, S.C.