



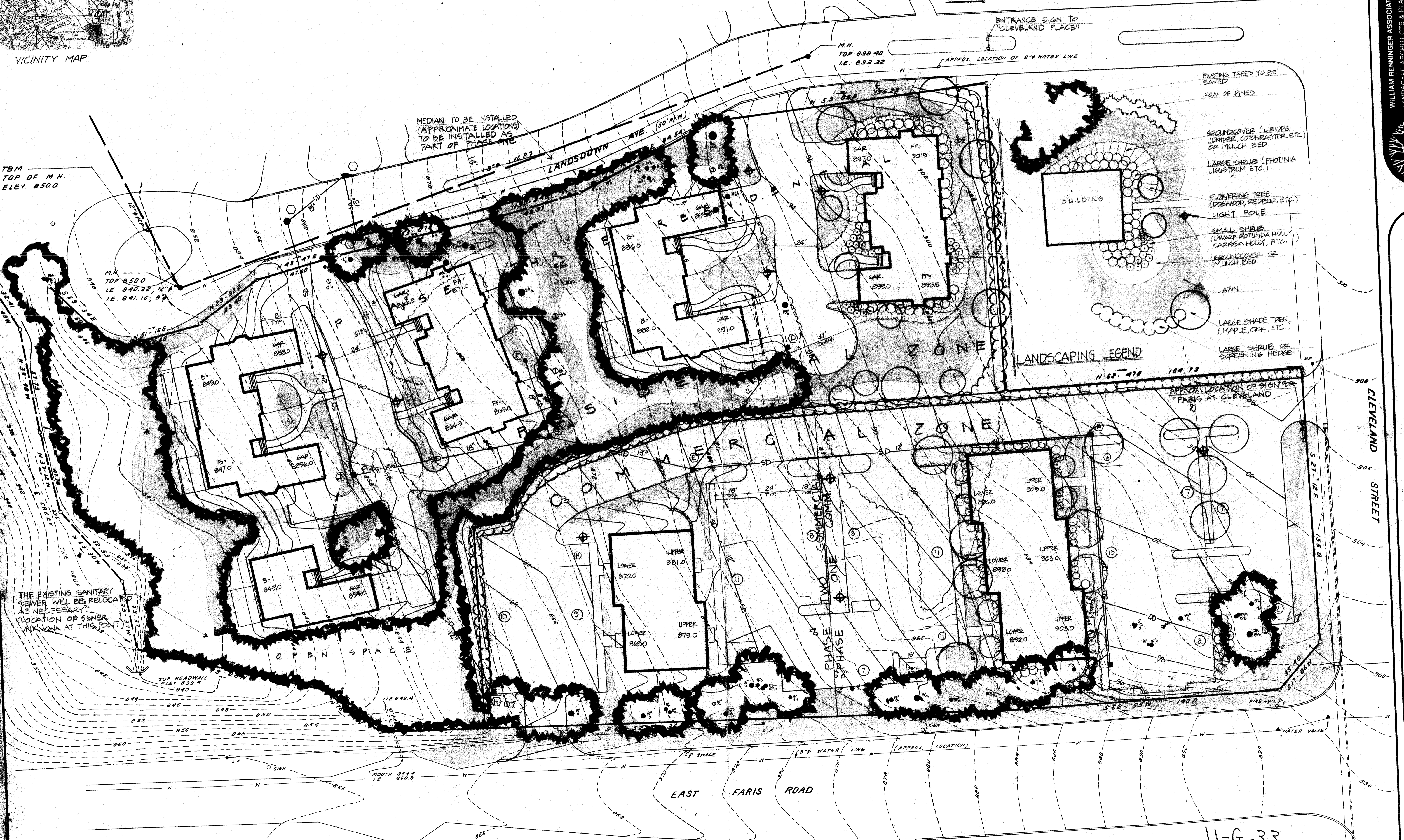
VICINITY MAP

FILED  
GREENVILLE, S.C.  
MAR 14 1 57 PM '85  
DOWNS & SHERIDAN  
ENGINEERS

FILED  
GREENVILLE, S.C.  
MAR 14 1 57 PM '85  
DOWNS & SHERIDAN  
ENGINEERS

CERTIFICATE OF APPROVAL FOR RECORDING  
I hereby certify that the Final Development Plan and/or Statement of Intent  
seen approved by the Greenville County Planning Commission for recording in the  
office of the County Register of Mesne Conveyance.  
Date 3/6/85 F. James Fisher  
City Director  
Greenville County Planning Commission

TBM  
TOP OF M.H.  
ELEV 8500



LANDSCAPING LEGEND

- EXISTING TREES TO BE SAVED
- ROW OF PINES
- GROUNDCOVER (LIRIOPE, JUNIPER, CORNEASTER, ETC.) OR MULCH BED
- LARGE SHRUBS (PHOTINIA, LEBSTRAUM, ETC.)
- FLOWERING TREE (DOGWOOD, REDBUD, ETC.)
- LIGHT POLE
- SMALL SHRUB (DWARF ROTUNDA HOLLY, CAROLINA HOLLY, ETC.)
- GROUNDCOVER OR MULCH BED
- LAWN
- LARGE SHADE TREE (MAPLE, OAK, ETC.)
- LARGE SHRUB OR SCREENING HERE

THE EXISTING SANITARY SEWER WILL BE RELOCATED AS NECESSARY. LOCATION OF SEWER UNKNOWN AT THIS POINT.

11-G-32

11-G-33  
FOR DESCRIPTIVE STATEMENT SEE DEED BOOK 1234 at PAGE 189  
MAR 14 1985

REVISED 3-6-85 PER CITY PLANNING COMMISSION COMMENTS

WILLIAM RENNINGER ASSOCIATES  
LANDSCAPE ARCHITECTS & PLANNERS  
ROUTE 12 WOODHAVEN DRIVE  
GREENVILLE, SOUTH CAROLINA 29609  
575-493-2585

DEVELOPMENT PLAN  
FARIS AT CLEVELAND & CLEVELAND PLACE  
GREENVILLE, S.C.  
FARIS DEVELOPMENT COMPANY

SCALE 1"=20'  
FEB 22 1985