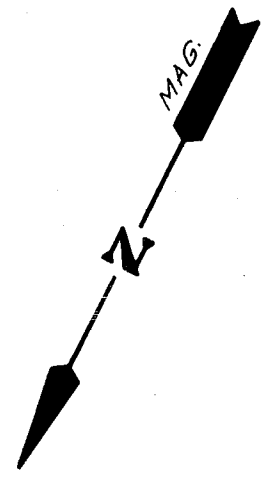
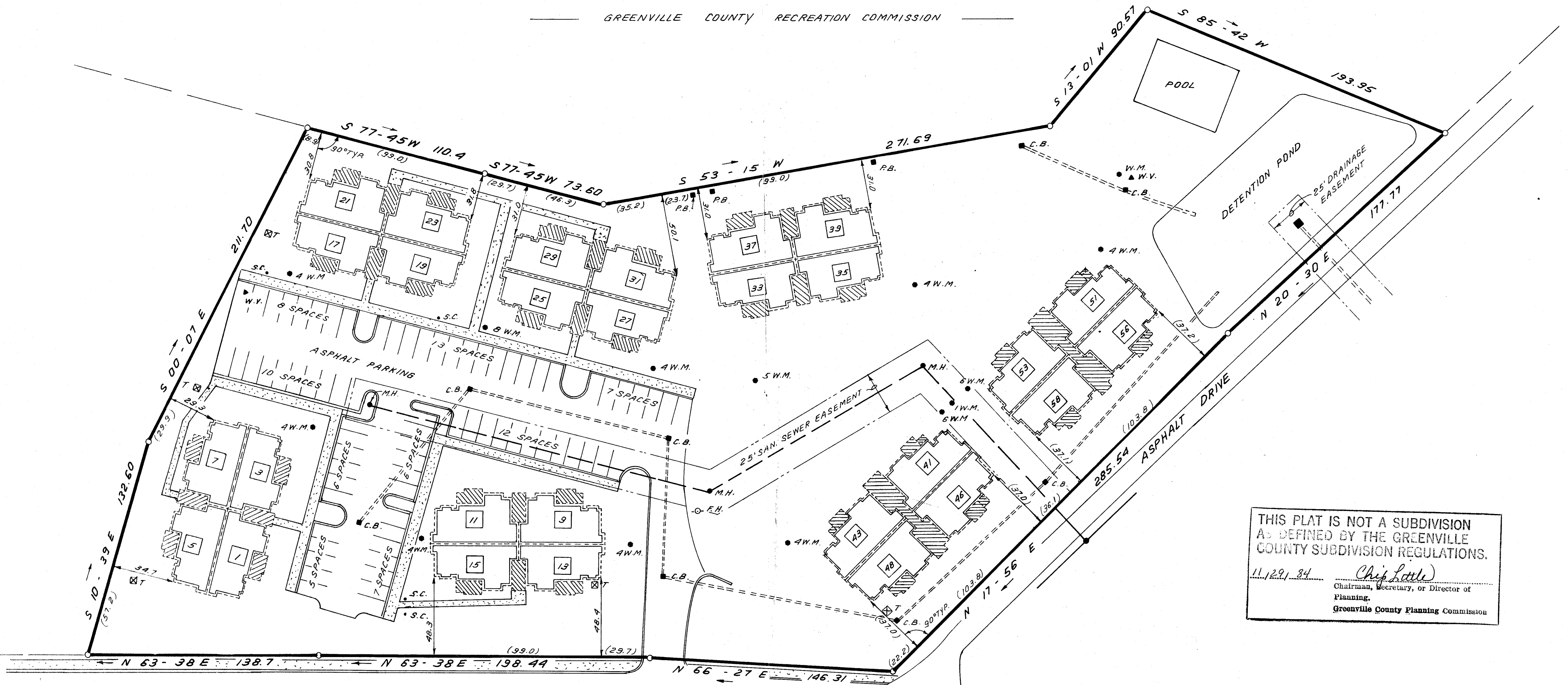


- LEGEND.**
- P.B. POWER BOX
 - W.M. WATER METER
 - ▲ W.V. WATER VALVE
 - M.H. SEWER MANHOLE
 - C.B. CATCH BASIN
 - F.H. FIRE HYDRANT
 - ⊠ T. TRANSFORMER
 - S.C. SPRINKLER CONTROL
 - UNIT BOUNDARY
 - - - COMMON ELEMENTS
 - ▨ LIMITED COMMON ELEMENTS

FILED
GREENVILLE CO. S.C.
Nov 29 4 01 PM '84
DONNIE S. TANKERSLEY
R.M.C.



GREENVILLE COUNTY RECREATION COMMISSION



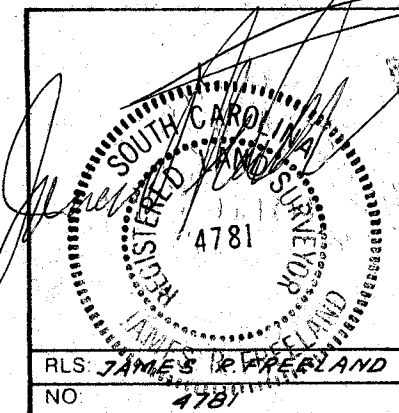
THIS PLAT IS NOT A SUBDIVISION
AS DEFINED BY THE GREENVILLE
COUNTY SUBDIVISION REGULATIONS.
11/29/84 *Chip Little*
Chairman, Secretary, or Director of
Planning,
Greenville County Planning Commission

NOV 29 1984 FIRST FLOOR CONTAINING A TOTAL OF 28 UNITS

OLD SPARTANBURG ROAD

10Z-65
16311

Plat Filed This 29 day of Nov. 1984
And Recorded in Vol. 10-2 Page 65 at 4:21 P.M.
Donnie S. Tankersley
Register Mens Conveyance Greenville County, S. C.



STATE OF SOUTH CAROLINA
GREENVILLE COUNTY

PARKVIEW
HORIZONTAL PROPERTY REGIME
FIRST FLOOR
EXHIBIT "A" 3 NO29 84

FREELAND & ASSOCIATES Engineers & Land Surveyors 316 WEST STONE AVENUE, GREENVILLE, S.C. (803) 271-4924	
PLAT BOOK	
DEED BOOK	
TAX MAP	
PARTY CHIEF	J.C.
DRAWN	B.P.
DATE	11-19-84
DWG NO	10_216

