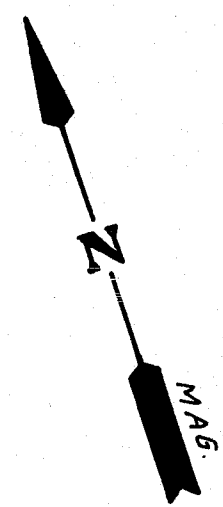
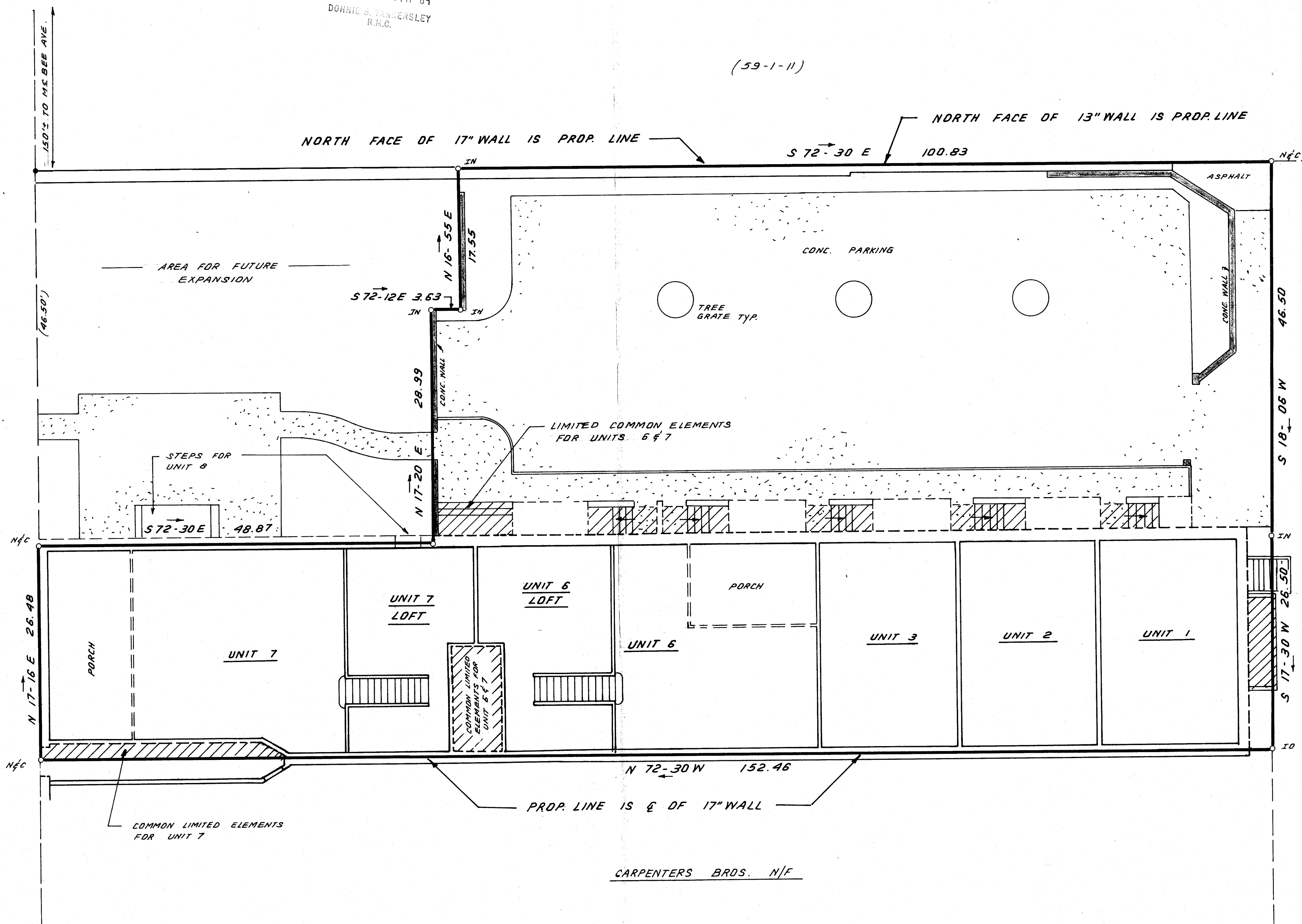


FILED
GREENVILLE CO. S.C.
Nov 9 3 14 PM '84
DONNIE S. TAYNERSLEY
R.M.C.

(59-1-11)



SOUTH MAIN STREET



LEGEND:
 --- COMMON ELEMENTS
 — UNIT BOUNDARY
 ▨ LIMITED COMMON ELEMENTS

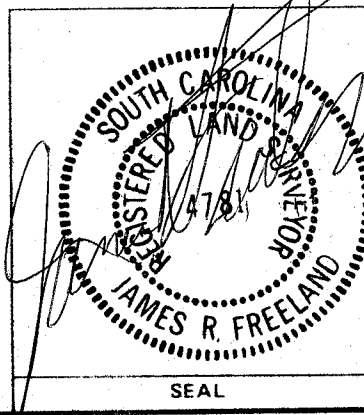
10-2-49

14285

THIS PLAT IS NOT A SUBDIVISION
 AS DEFINED BY THE GREENVILLE
 COUNTY SUBDIVISION REGULATIONS.
 9/11/84 *John D. Weigand*
 Chairman, Secretary, or Director of
 Planning,
 Greenville County Planning Commission



EXHIBIT "B"



STATE OF SOUTH CAROLINA
 GREENVILLE COUNTY
 COURT SQUARE
 HORIZONTAL PROPERTY REGIME
 SECOND FLOOR LOFT
 UNIT 1; 2; 3; 4; 5

FREELAND & ASSOCIATES Engineers & Land Surveyors GREENVILLE, S.C.
SURVEY J.E.C.
DRAWN B.R.
CHECK
SCALE 1/8" = 1'-0"
DATE 10-16-84
DWG. NO. 4302-D