

NOTES:
1. ALL FLOOD PLAIN INFORMATION SUPPLIED BY U.S. ARMY CORPS OF ENGINEERS

BRYAN KIRBY

TOTAL ACRES IN BOUNDARY 29.67 Ac.
 ACRES IN ALEWINE TRACT - 3.79 Ac.
 R/W MTN. CREEK CHURCH RD. - 0.55 Ac.
 PHASE XI NET ACRES 25.33 Ac.

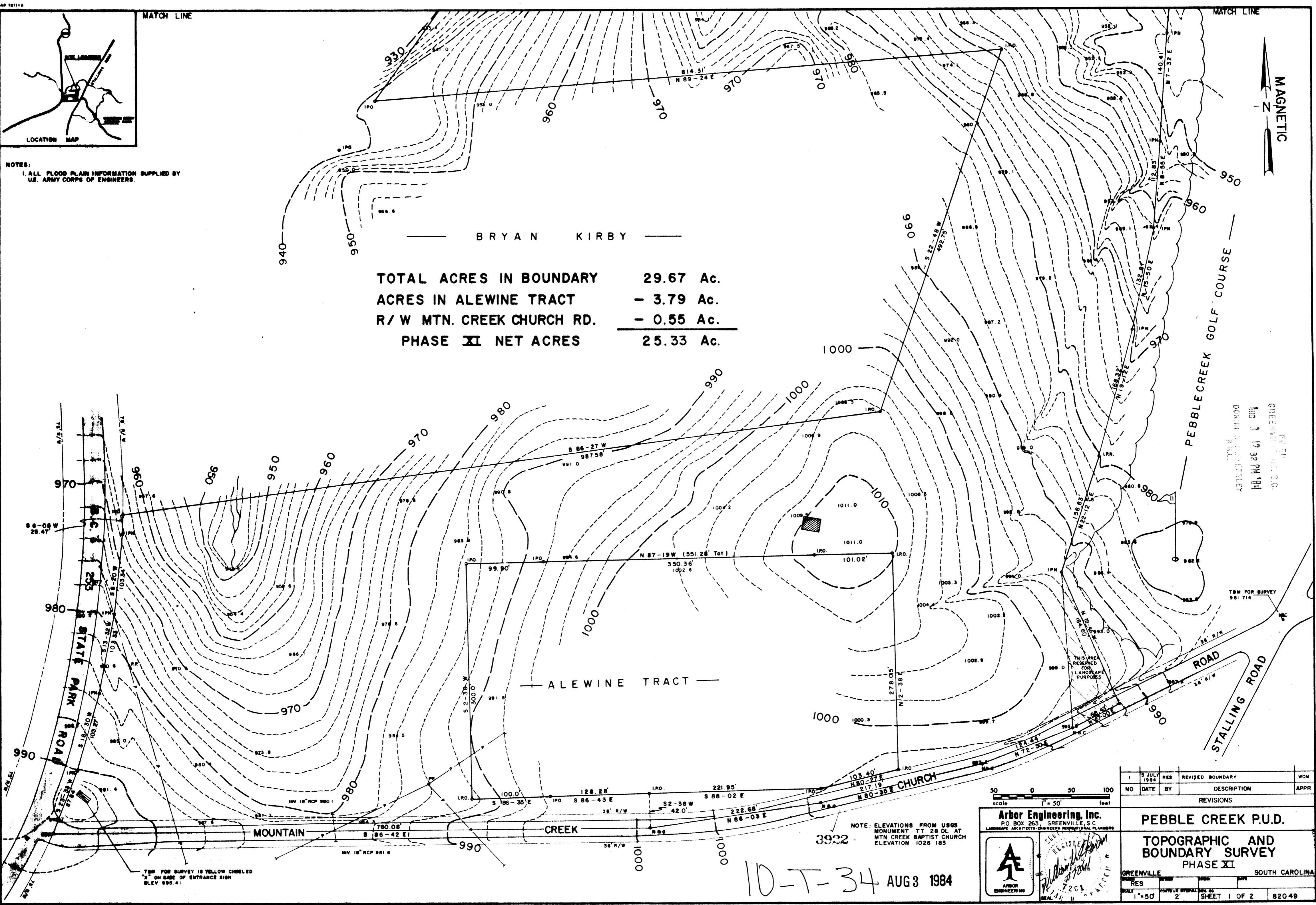


FIG. 111
GREENVILLE, S.C.
AUG 3 12 32 PM '84
DORRIS J. HARRIS
REGISTERED PROFESSIONAL SURVEYOR

NO.	DATE	BY	REVISIONS	DESCRIPTION	WCM	APPR
1	JULY 1984	RES	REVISED BOUNDARY			

PEBBLE CREEK P.U.D.
 TOPOGRAPHIC AND BOUNDARY SURVEY
 PHASE XI
 GREENVILLE SOUTH CAROLINA
 SHEET 1 OF 2 820.49

Arbor Engineering, Inc.
 P.O. BOX 263, GREENVILLE, S.C.
 LANDSCAPE ARCHITECTS, ENGINEERS, PLANNERS

REGISTERED PROFESSIONAL ENGINEER
 STATE OF SOUTH CAROLINA
 7261

10-T-34 AUG 3 1984

82049

5.00 02 ps