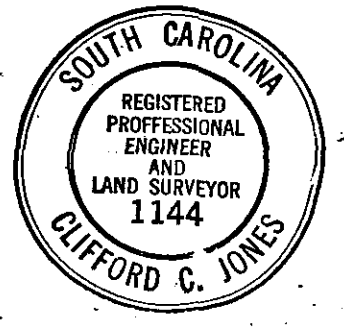
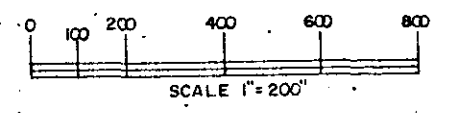
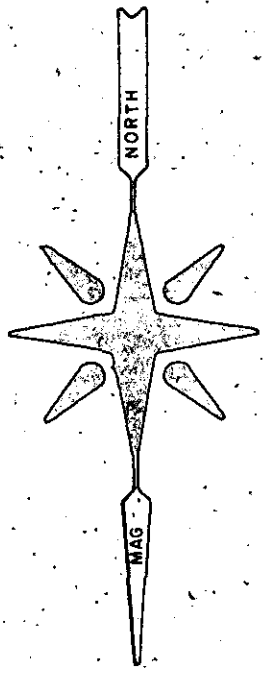


THIS PLAN IS NOT A SUBDIVISION
 AS DEFINED BY THE GREENVILLE
 COUNTY SUBDIVISION REGULATIONS.
 9/29/83 *Stephen W. Jarne*
 Chairman, Secretary, or Director of
 Planning.
 Greenville County Planning Commission



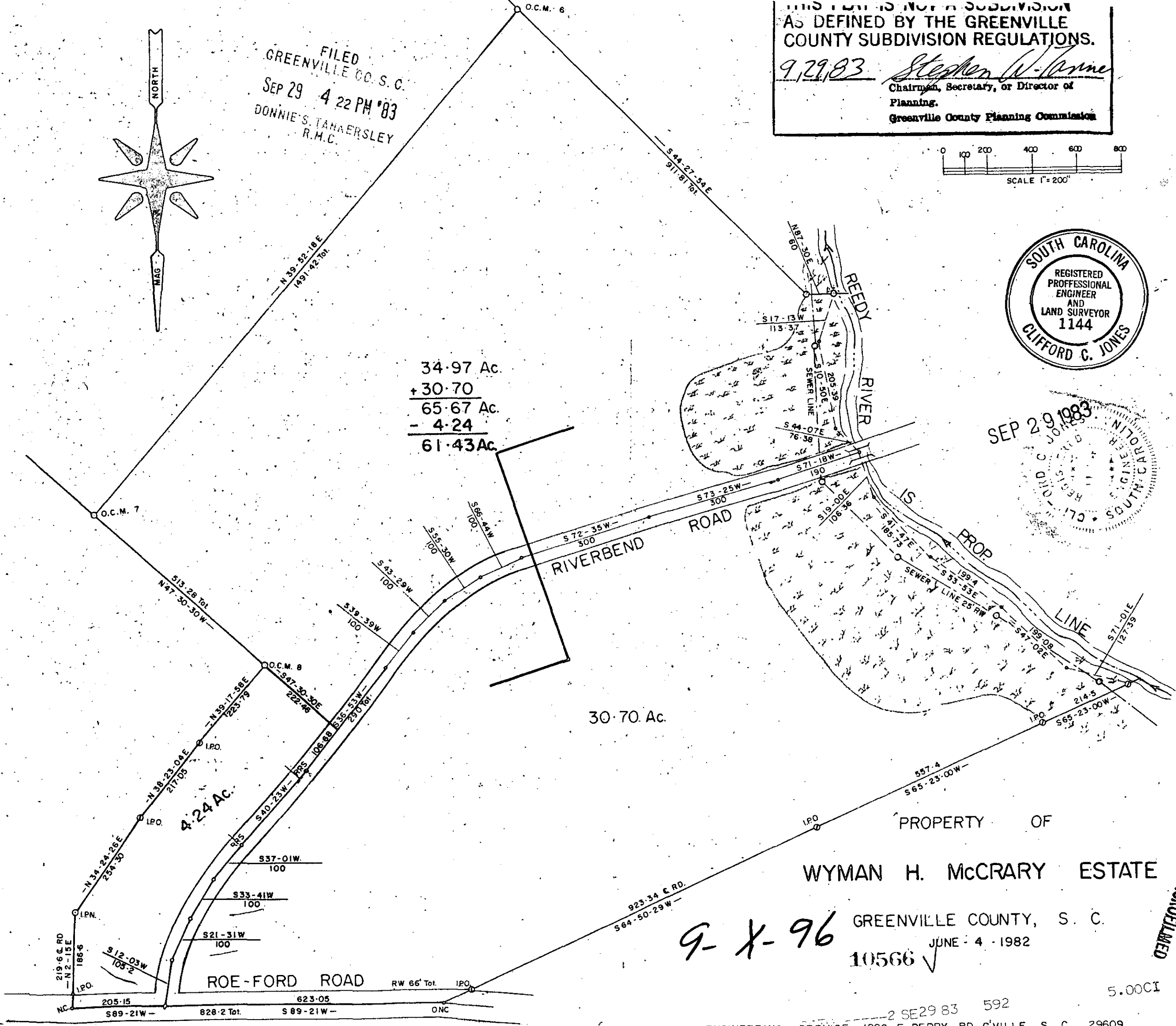
FILED
 GREENVILLE CO. S. C.
 SEP 29 4 22 PM '83
 DONNIE S. TANKERSLEY
 R.M.C.



34.97 Ac.
 + 30.70
 65.67 Ac.
 - 4.24
 61.43 Ac.

30.70 Ac.

4.24 AC.



PROPERTY OF
 WYMAN H. McCRARY ESTATE

9-X-96 GREENVILLE COUNTY, S. C.
 10566 ✓ JUNE 4 1982

MICROFILMED

5.00CI

2 SE29 83 592