

MICROFILMED

FILED  
GAV GREENVILLE S.C.  
JUL 11 9 49 AM '83  
DONNIE S. ANDERSON  
R.M.C.

THIS PLAT IS NOT A SUBDIVISION  
AS DEFINED BY THE GREENVILLE  
COUNTY SUBDIVISION REGULATIONS.  
7/11/83  
Z.A. Tolles  
Chairman, Secretary or Director of  
Planning.  
Greenville County Planning Commission

5.8 Ac ±

2.0 ± Ac

PROPERTY OF  
GERTRUDE BROWN ESTATE  
MAY 19, 1983  
STATE OF SOUTH CAROLINA  
COUNTY OF GREENVILLE

SCALE: 1" = 100'  
PRECISION 1/3978  
✓ 9-V-26

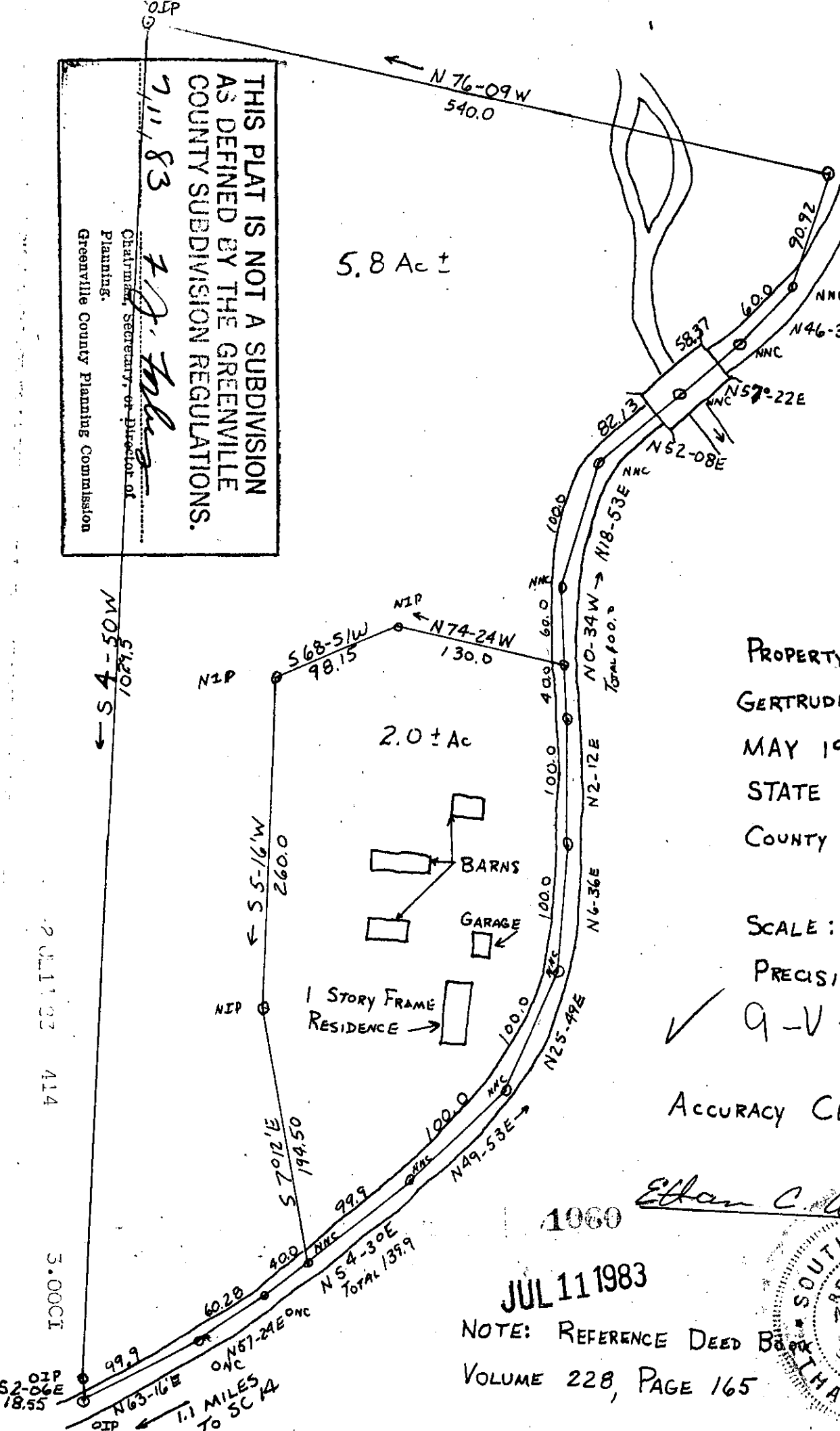
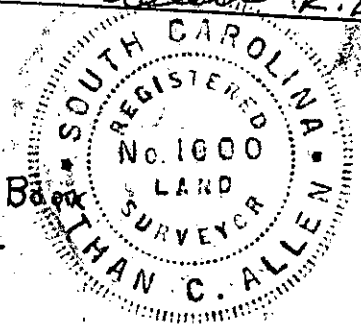
ACCURACY CERTIFIED

*Ethan C. Allen R.L.S.*

1000

JUL 11 1983

NOTE: REFERENCE DEED BOOK  
VOLUME 228, PAGE 165



JUL 11 1983 414 3.000CI

1.1 MILES TO SC 14