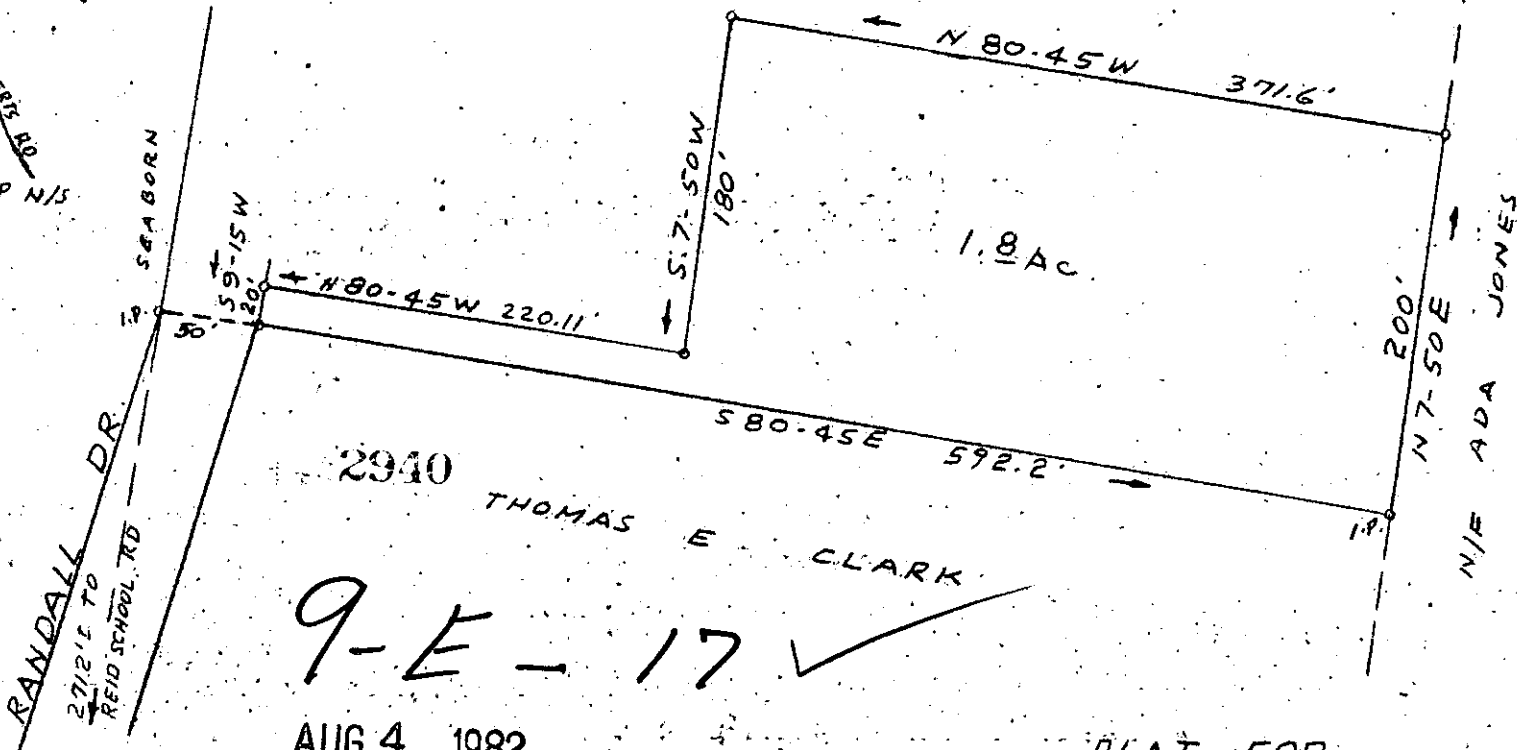


FILED  
 GREENVILLE CO. S. C.  
 AUG 4 11-14 AM '82  
 DONNIE TANKERSLEY  
 R.M.C.

D. J. & GRACE M. ALLEN

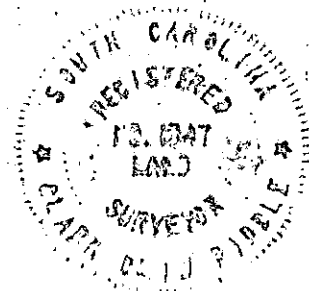


9-E-17 ✓  
 AUG 4 1982

PLAT FOR  
 D. J. & GRACE M. ALLEN  
 NEAR GREENVILLE S. C.

SCALE 1" = 100'

AUG 2, 1982



NOTE: THIS PLAT DOES NOT REPRESENT A SURVEY

DRAWN BY

C. O. Riddle RLS # 1347

MAG.

MICROFILMED