

"THIS PLAT TO BE RECORDED IN THE R.M.C. OFFICE."

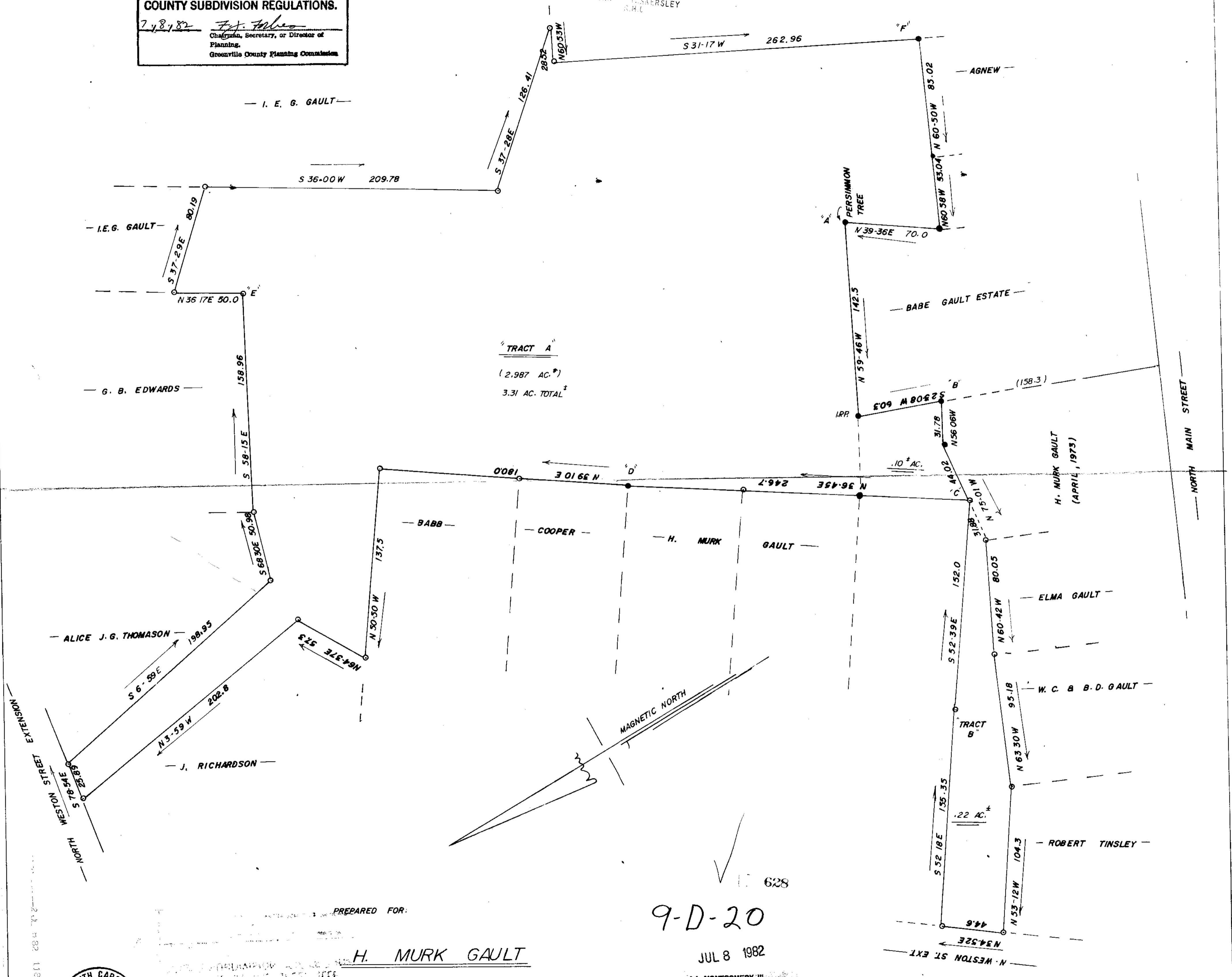
"THIS IS TO CERTIFY THAT THE ERROR OF CLOSURE OF THIS SURVEY IS 1 IN \_\_\_\_\_, AND THE ACREAGE HAS BEEN DETERMINED BY THE D.M.D. METHOD."

"I.P.S. FOUND AT ALL CORNERS EXCEPT WHERE NOTED."

**THIS PLAT IS NOT A SUBDIVISION AS DEFINED BY THE GREENVILLE COUNTY SUBDIVISION REGULATIONS.**  
7/8/82 *F. J. Folber*  
Chairman, Secretary, or Director of Planning,  
Greenville County Planning Commission

FILED  
GREENVILLE CO. S.C.  
JUL 2 2 45 PM '82 AGNEW  
BOARD OF RECORDERS  
SHERSLEY  
AHL

MICROFILMED



PREPARED FOR:

H. MURK GAULT

9-D-20

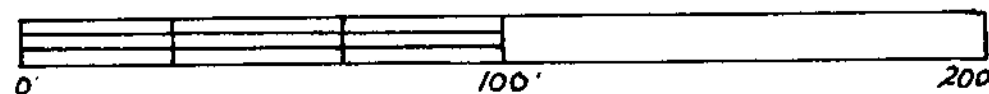
JUL 8 1982



FOUNTAIN INN GREENVILLE COUNTY SOUTH CAROLINA

JULY 5, 1982

SCALE: 1"=40'



J. L. MONTGOMERY, III, RLS.

J. L. MONTGOMERY, III  
Registered Professional Surveyor  
NORTH MAPLE STREET  
SIMPSONVILLE, S.C. 2968

\* LINES 'D' THROUGH 'A' FROM PLAT BY R. D. WOOTEN, JR. RLS., 12/21/79  
LINES 'A' THROUGH 'D' FROM PLATS BY THIS FIRM 1974 & 1982.  
TRACT 'B' TO BE CONFIRMED AS PART OF ESTATE BY APPROPRIATE TITLE SEARCH.

5,0001