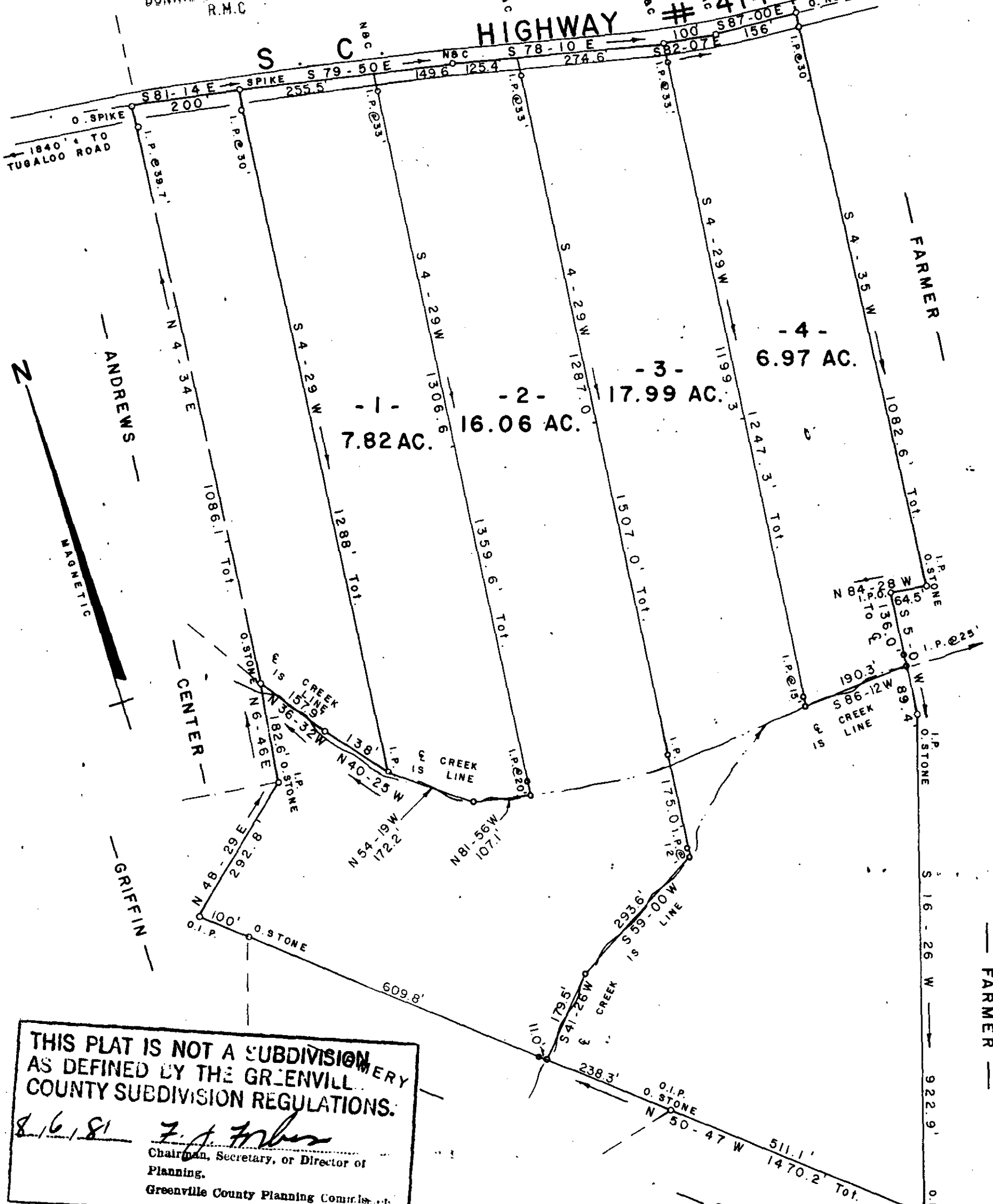


MICROFILMED FILED
 GREENVILLE CO. S. C.
 AUG 6 11 42 AM '81
 DONNIE S. TANKERSLEY
 R.M.C.

HIGHWAY # 414



THIS PLAT IS NOT A SUBDIVISION
 AS DEFINED BY THE GREENVILLE
 COUNTY SUBDIVISION REGULATIONS.
 8/6/81 *F. J. Fisher*
 Chairman, Secretary, or Director of
 Planning.
 Greenville County Planning Commission

3448
 ✓ 8-9-59 SURVEY FOR
 MILTON H. SUDDUTH

HIGHLAND TOWNSHIP GREENVILLE CO.
 SOUTH CAROLINA

NOVEMBER 23, 1976

W. R. WILLIAMS, JR. ENGR. SURVEYOR # 3979 REVISED AUG. 4, 1981 (Subdivided)

15 SOUTH MAIN STREET TRAVELERS REST, S. C. F. B. 20 & 57 636.3-1-4 SCALE 1" = 200'