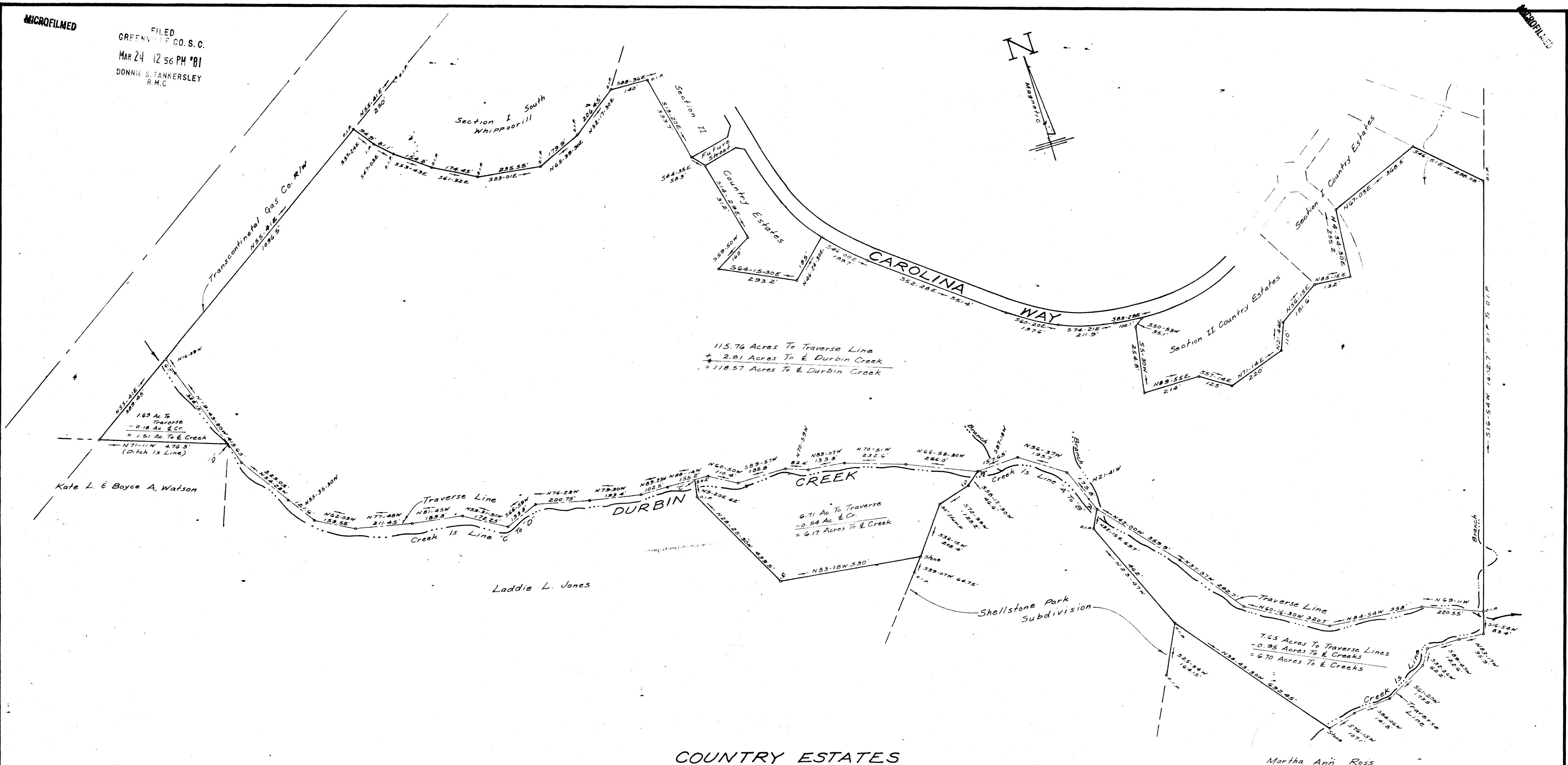
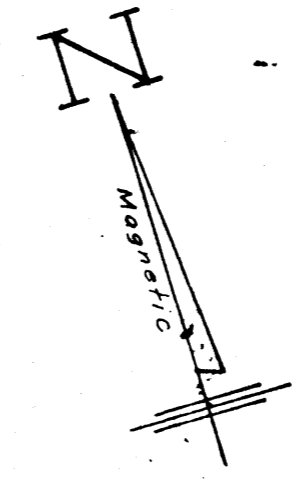


MICROFILMED

FILED
GREENVILLE CO. S.C.
MAR 24 12 56 PM '81
DONNIE S. TANKERSLEY
R.M.C.



COUNTRY ESTATES

SURVEY FOR

BAYNE DEVELOPMENT COMPANY

NEAR FOUNTAIN INN, GREENVILLE CO., S.C.

SCALE: 1"=200' APRIL, 1980

THIS PLAT IS NOT A SUBDIVISION
AS DEFINED BY THE GREENVILLE
COUNTY SUBDIVISION REGULATIONS.
383,81 *F.J. Forbes*
Chairman, Secretary, or Director of
Planning.
Greenville County Planning Commission

36629
J-I-97+98

Total Area = 132.95 Acres

MAR 24 1981

W.R. Williams, Jr.
W.R. WILLIAMS, JR.
ENGINEER/SURVEYOR
P.E. & L.S. No. 3979
15 S. MAIN ST.
TRAVELERS REST, S.C.