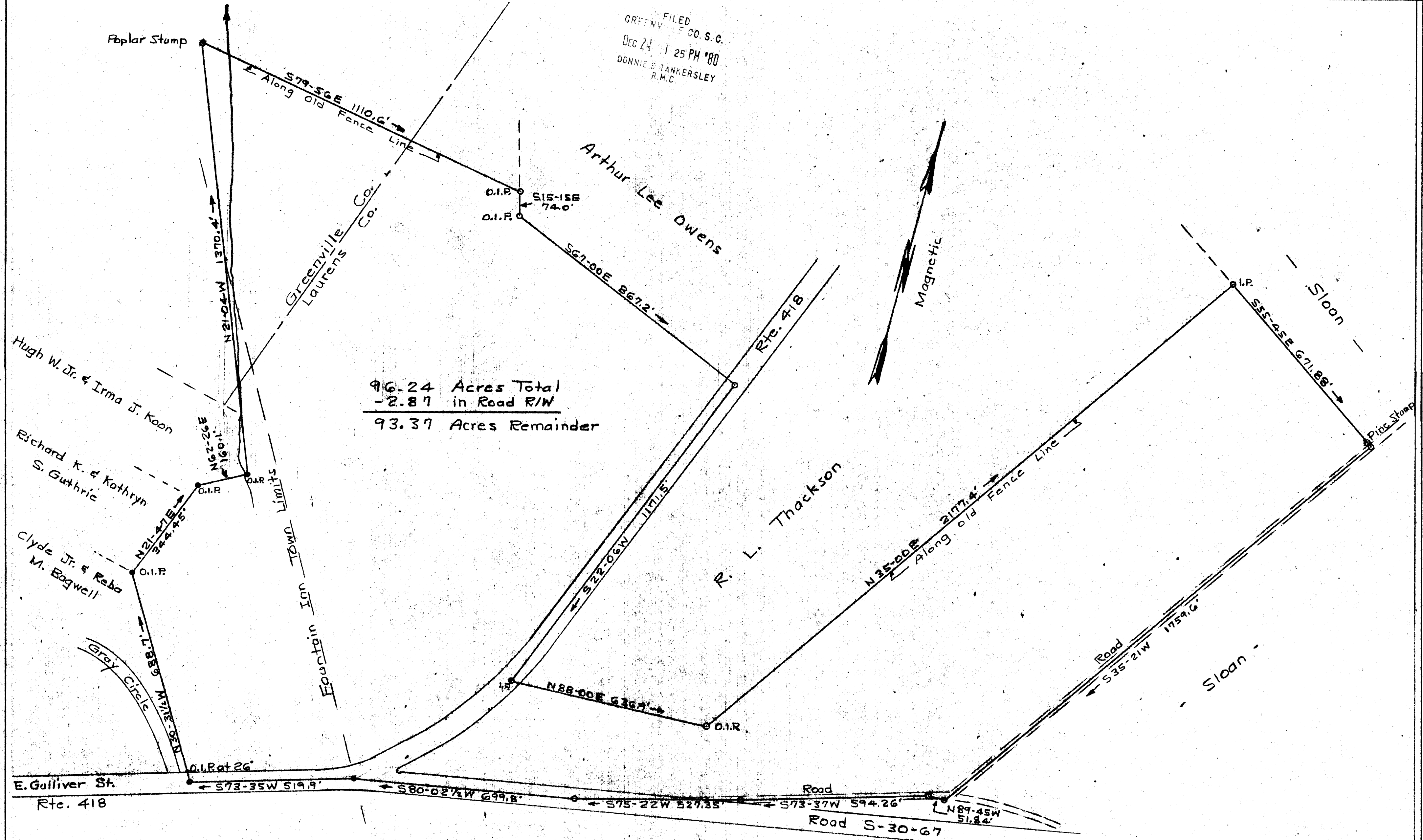


FILED
 GRF ENV CO. S. C.
 DEC 24 1 25 PM '80
 DONNIE S. TANKERSLEY
 R.M.C.



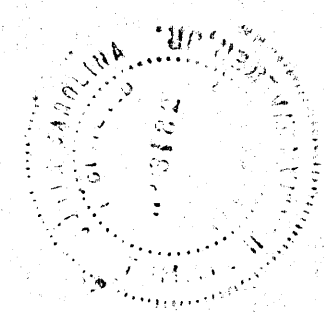
96.24 Acres Total
 - 2.87 in Road R/W
 93.37 Acres Remainder

88.34 Acres ± Laurens County
 7.90 " ± Greenville "
 96.24 Acres Total
 11.70 Acres ± in Fountain Inn Town Limits

PROPERTY OF
 THOMAS W. EDWARDS
 GREENVILLE - LAURENS CO'S.
 STATE OF S. C.
 Scale 1" = 200' July 19, 1980
 T.H. Walker Jr. Reg. L. S. 3182
 300 Maple Dr. Mauldin, S. C.

DEC 24 1980

8-1-27



18751

55641-1-848.1 NOTE ALL IN LAURENS CO.