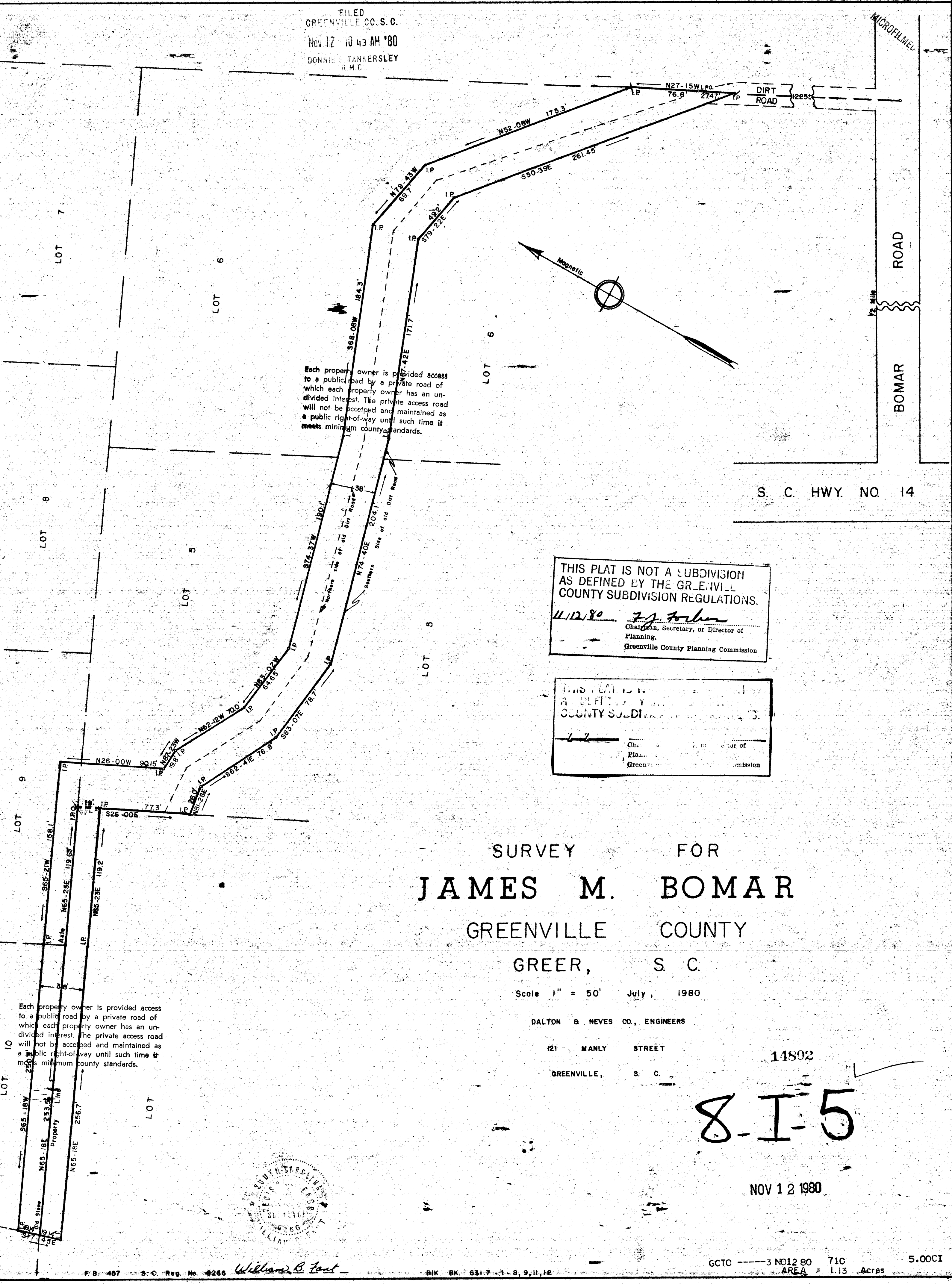


FILED
 GREENVILLE CO. S. C.
 Nov 12 10 43 AM '80
 DONNIE S. TANKERSLEY
 R.M.C.

MICROFILMED



S. C. HWY. NO. 14

BOMAR ROAD

THIS PLAT IS NOT A SUBDIVISION AS DEFINED BY THE GREENVILLE COUNTY SUBDIVISION REGULATIONS.
 11/12/80 *F. J. Fisher*
 Chairman, Secretary, or Director of Planning.
 Greenville County Planning Commission

THIS PLAT IS NOT A SUBDIVISION AS DEFINED BY THE GREENVILLE COUNTY SUBDIVISION REGULATIONS.
 11/12/80
 Chairman, Secretary, or Director of Planning.
 Greenville County Planning Commission

SURVEY FOR
JAMES M. BOMAR
 GREENVILLE COUNTY
 GREER, S. C.

Scale 1" = 50' July, 1980

DALTON & NEVES CO., ENGINEERS
 121 MANLY STREET
 GREENVILLE, S. C.

14802

8-I-5

NOV 12 1980



William B. Fort

GCTO 3 N012 80 710
 AREA = 1.13 Acres 5.00CI