

JETER KIRBY

CURVE No. 2
 R = 50.0'
 Δ = 194° 32'
 L = 169.76'
 C = 99.20'

CURVE No. 1
 R = 225.0'
 Δ = 33° 00'
 T = 66.65'
 L = 129.59'
 C = 127.81'

NOTE:
 50' ROAD R/W BETWEEN
 POINTS "A" AND "B" MAY
 BE RELOCATED.

13.79 Ac.

NOTE: CREEK IS THE
 LINE. BEARINGS AND
 DISTANCES SHOWN ARE
 TRAVERSE LINES ONLY.

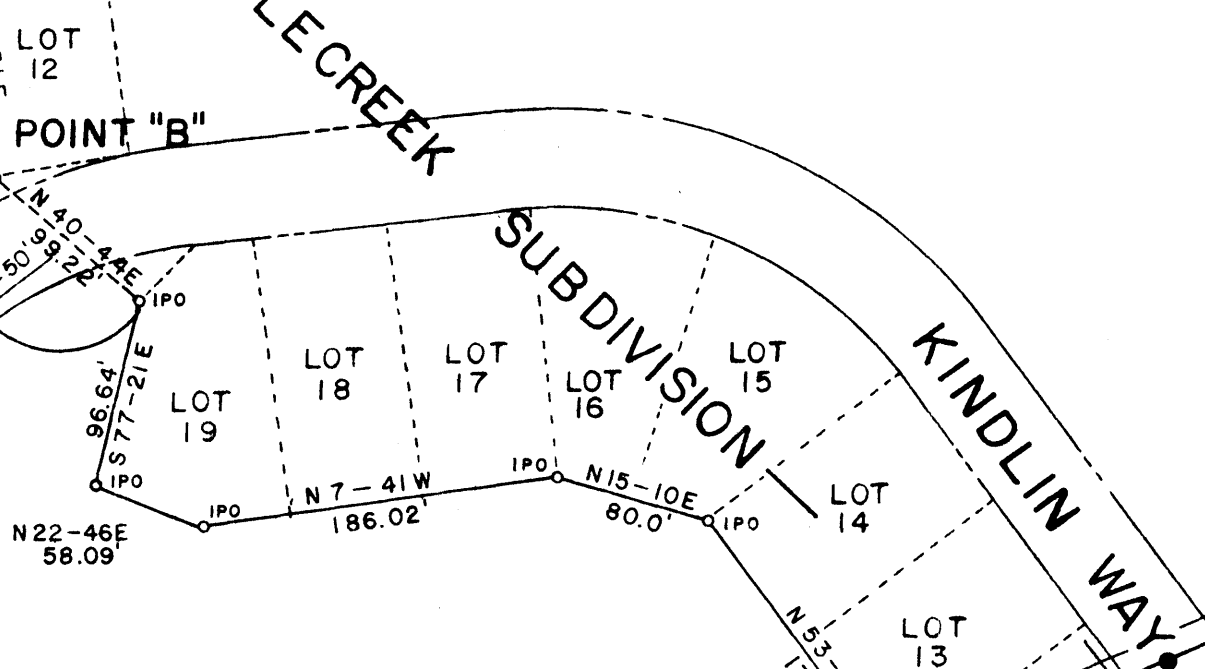
PROPOSED EXTENSION OF KINDLIN WAY

UNITED DEVELOPERS, INC.

PEBBLECREEK GOLF COURSE

PEBBLECREEK SUBDIVISION

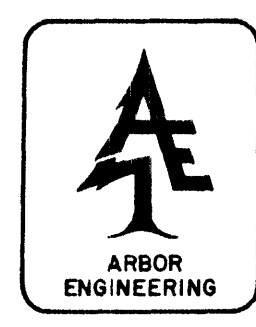
KINDLIN WAY



FILED
 NOV 11 12 17 PM '80
 DONNIE S. FANKERSLEY
 R.M.C.



Arbor Engineering, Inc.
 P.O. BOX 263, GREENVILLE, S.C.
 LANDSCAPE ARCHITECTS-ENGINEERS-RECREATIONAL PLANNERS



William W. Schaefer
 5/26/80
 SEAL

NO.	DATE	BY	DESCRIPTION	WNS	APPR.
1	1AUG80	WNS	AS BUILT CORRECTIONS MADE TO METES AND BOUNDS	WNS	
REVISIONS					

UNITED DEVELOPERS, INC.

**PEBBLECREEK SUBDIVISION
 PHASE III SECTION II
 FOX RIDGE**

GREENVILLE	SOUTH CAROLINA			
DRAWN	WNS	DESIGN	CHECK	DATE
SCALE	1" = 100'	FILE	DWG. NO.	80001-96
			RHF	30 JULY 80

NOTE: THIS IS A COMPOSITE PLAT AND DOES NOT CONSTITUTE AN ACTUAL FIELD SURVEY.

8-I-2

14711

This plot is not within the limits of the Greenville County Subdivision Regulation Jurisdiction and therefore recordation approval by the Greenville County Planning Commission is not required.
 4/1/80
Concepcion Carter
 Greenville County Planning Commission

11 1980

6218 W 11E

500 M

MICROFILMED