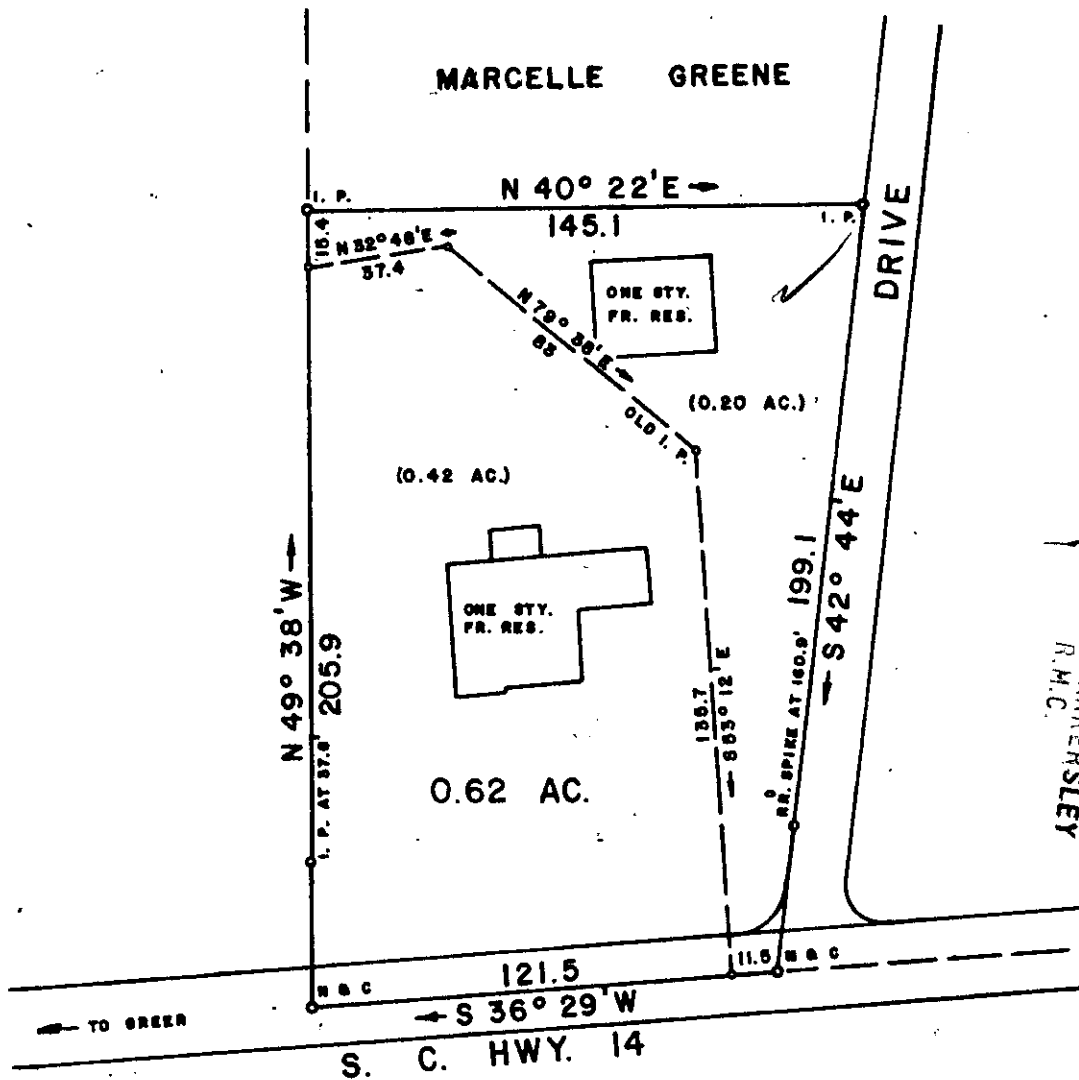
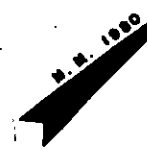


MICROFILMED



FILED  
GREENVILLE CO. S. C.  
OCT 28 11 40 AM '80  
DONNIE S. TANKERSLEY  
R.M.C.

THIS PLAT IS NOT A SUBDIVISION AS DEFINED BY THE GREENVILLE COUNTY SUBDIVISION REGULATIONS.

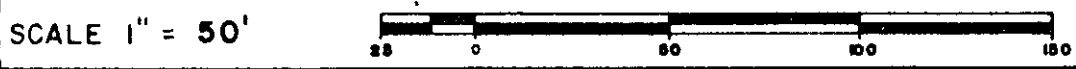
*Oct 29 1980* *Stephen W. Tanne*  
Chairman, Secretary, or Director of Planning  
Greenville County Planning Commission

8-N-29  
13309

SURVEY FOR  
**ARNOLD EDWARDS**

LOCATED APPROX. 9 MILES NORTH OF GREER

COUNTY: <b>GREENVILLE</b>	STATE: <b>SOUTH CAROLINA</b>
DATE: <b>SEPTEMBER 18, 1980</b>	FIELD CHIEF: <b>N. L. SPIVEY</b>
REVISED:	DRAWN BY: <b>L. B. MORROW</b>



WOLFE & HUSKEY, INC. ENGINEERING and SURVEYING  
P. O. BOX 35 · LYMAN, S. C. 29365



SC10 - 2 0028 80 017