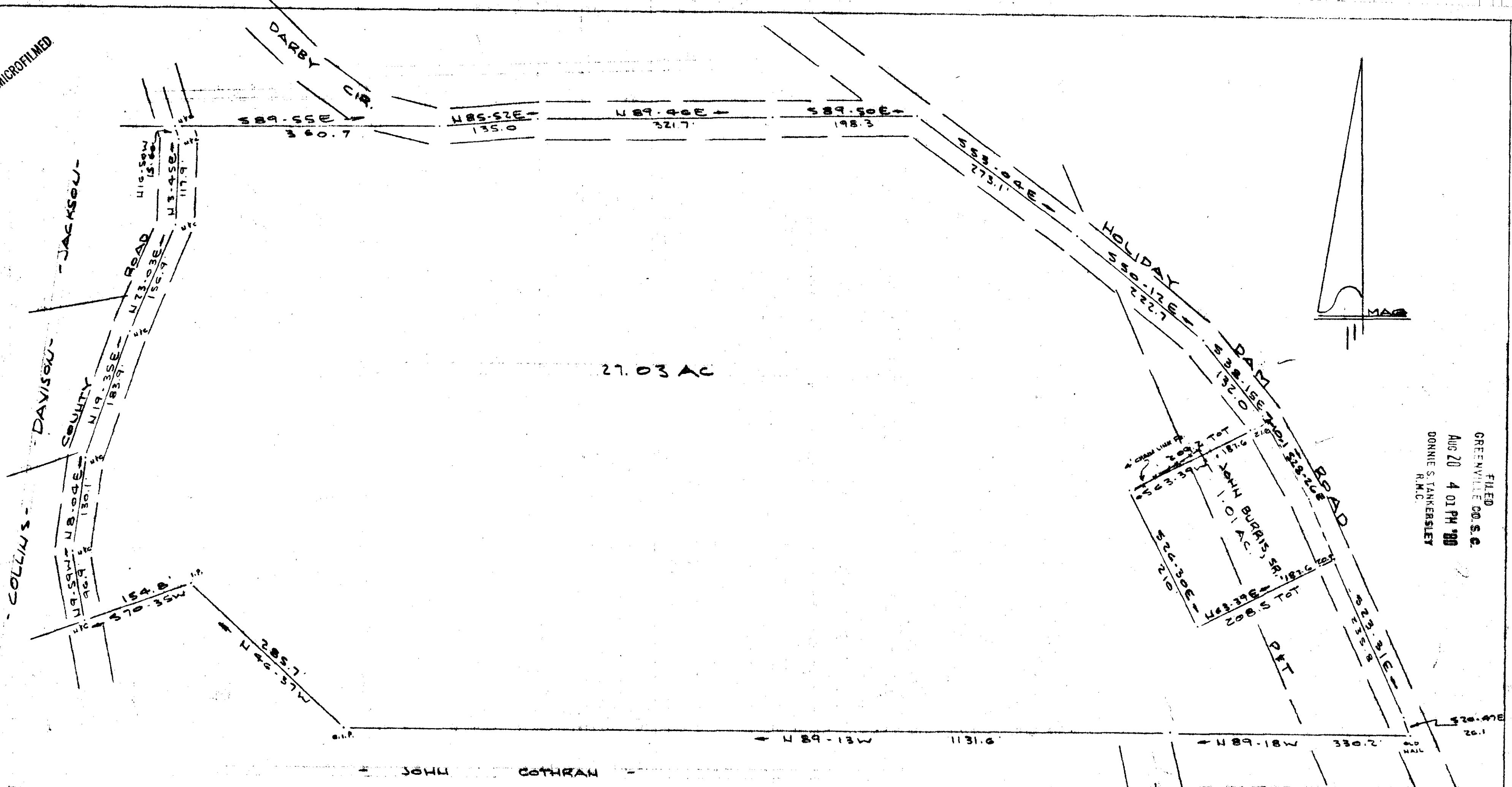


MICROFILMED



FILED
 GREENVILLE CO. S.C.
 AUG 20 4 01 PM '80
 DONNIE S. TANKERSLEY
 R.M.C.

THIS PLAT IS NOT A SUBDIVISION
 AS DEFINED BY THE GREENVILLE
 COUNTY SULDIVISION REGULATIONS.
 Aug 20, 1980 *Stephen W. Tamm*
 Chairman, Secretary, or Director of
 Planning.
 Greenville County Planning Commission

SURVEY FOR
 GEORGE I. WIKE, JR. & FRANCES G. WIKE
 NEAR GREENVILLE, S. C.
 SCALE: 1"=100' 20 DEC 1979

CAROLINA SURVEYING Co.
 112 MAHLY ST.
 GREENVILLE, S. C.
R. B. BRUSH
 Pt. 5983-1-1

5187
 7-Y-69
 AUG 20 1980